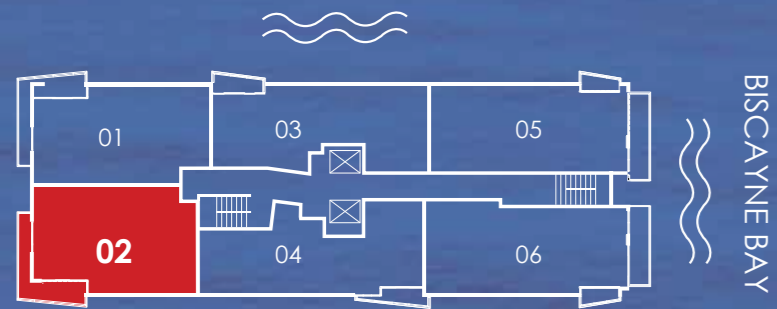


PENTHOUSE 02

3 BEDROOMS / 2 BATHROOMS

A/C AREA	1,651 S.F. (153.3 M ²)
BALCONIES	228 S.F. (21.2 M ²)
ROOF TERRACE	1,220 S.F. (113.3 M ²)
TOTAL	3,099 S.F. (287.8 M ²)



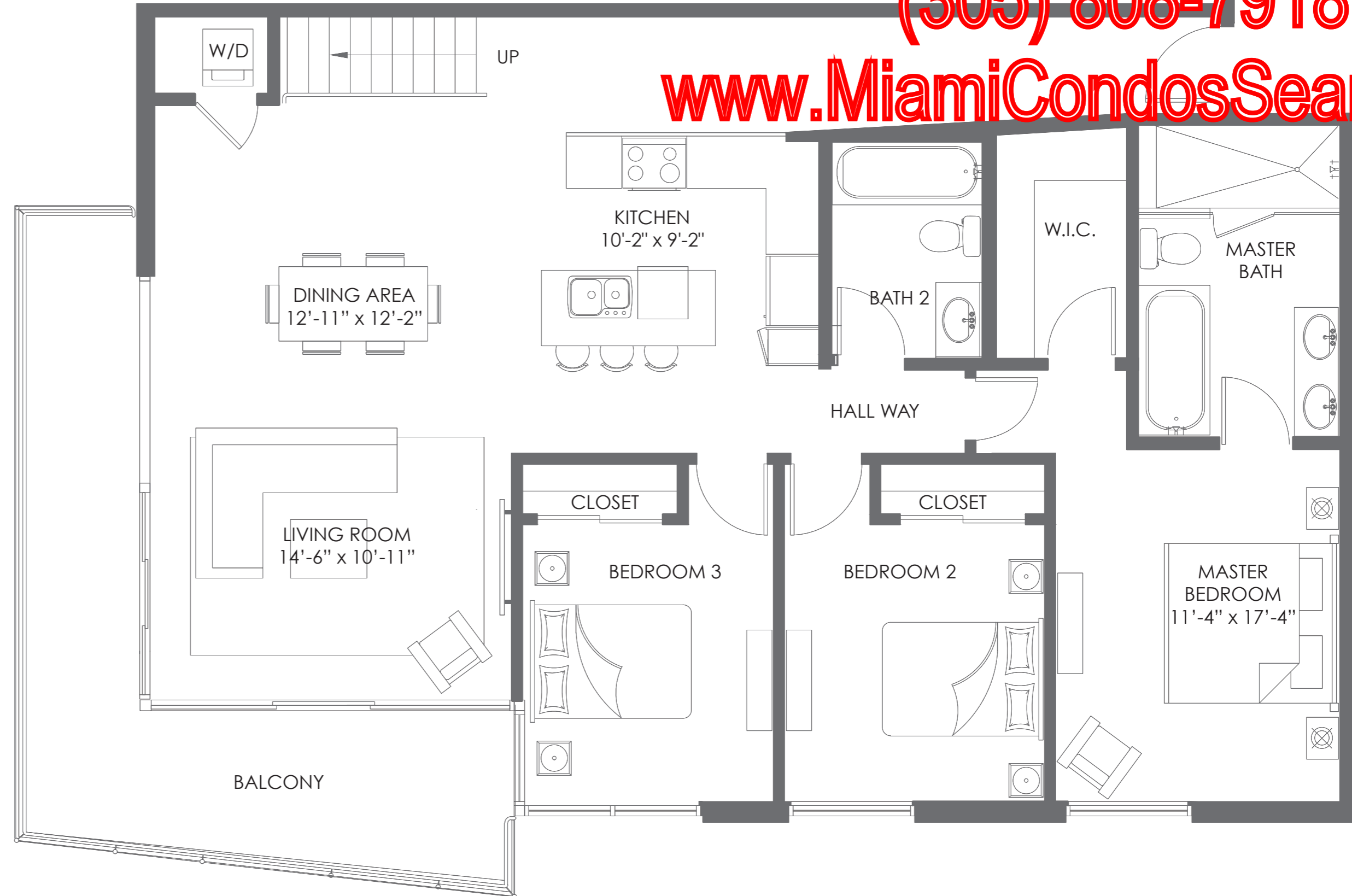
PENTHOUSES 19TH FLOOR



Daniel Hornek PA Realtor

(305) 808-7918

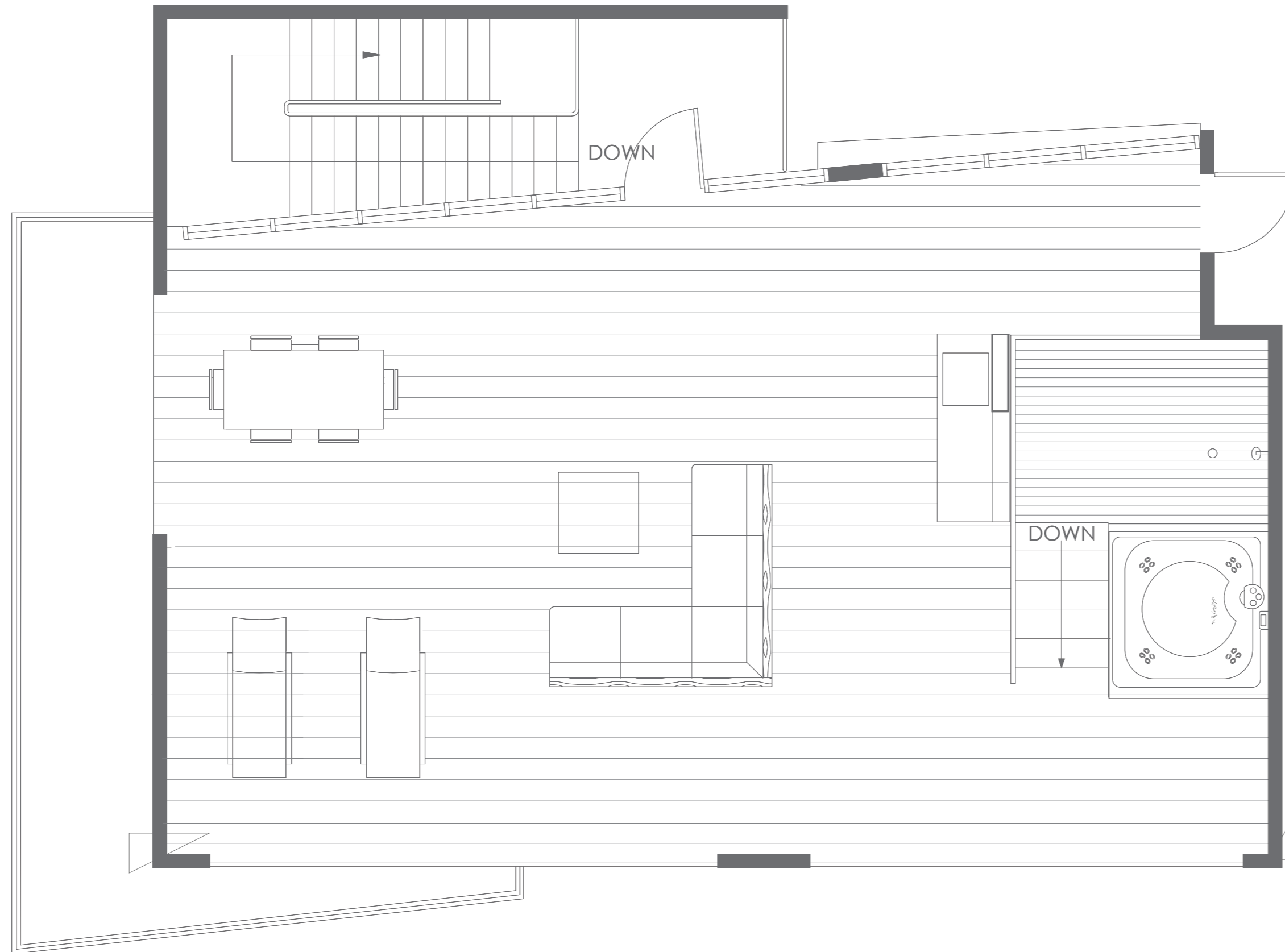
www.MiamiCondosSearch.com



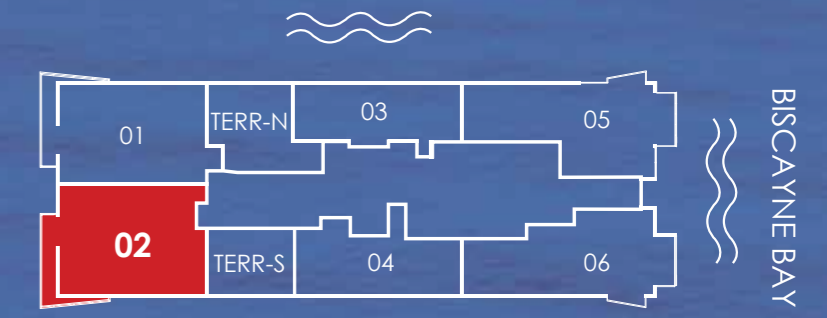
Daniel Hornek PA Realtor

(305) 808-7918

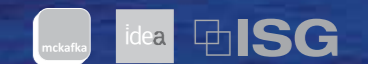
www.MiamiCondosSearch.com



ROOF TERRACE | 1,220 S.F. (113.3 M²)



PENTHOUSES 20TH FLOOR

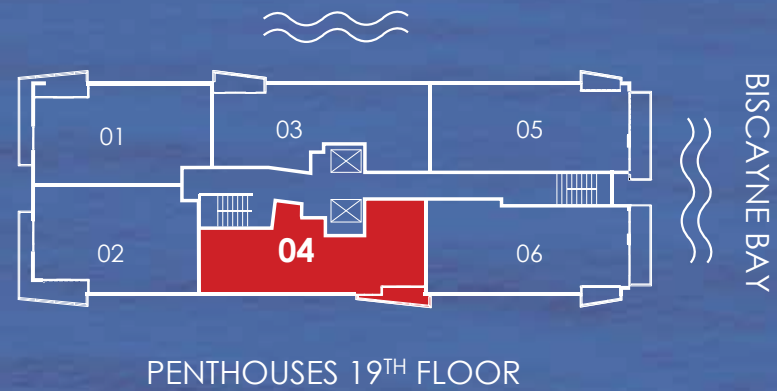


Stated dimensions are measured to the exterior boundaries of the exterior walls and the centerline of interior demising walls and in fact vary from the dimensions that would be determined by using the description and definition of the "unit" set forth in the declaration. All floor plans and development plans are approximate and subject to change.

PENTHOUSE 04

2 BEDROOMS / 2 BATHROOMS

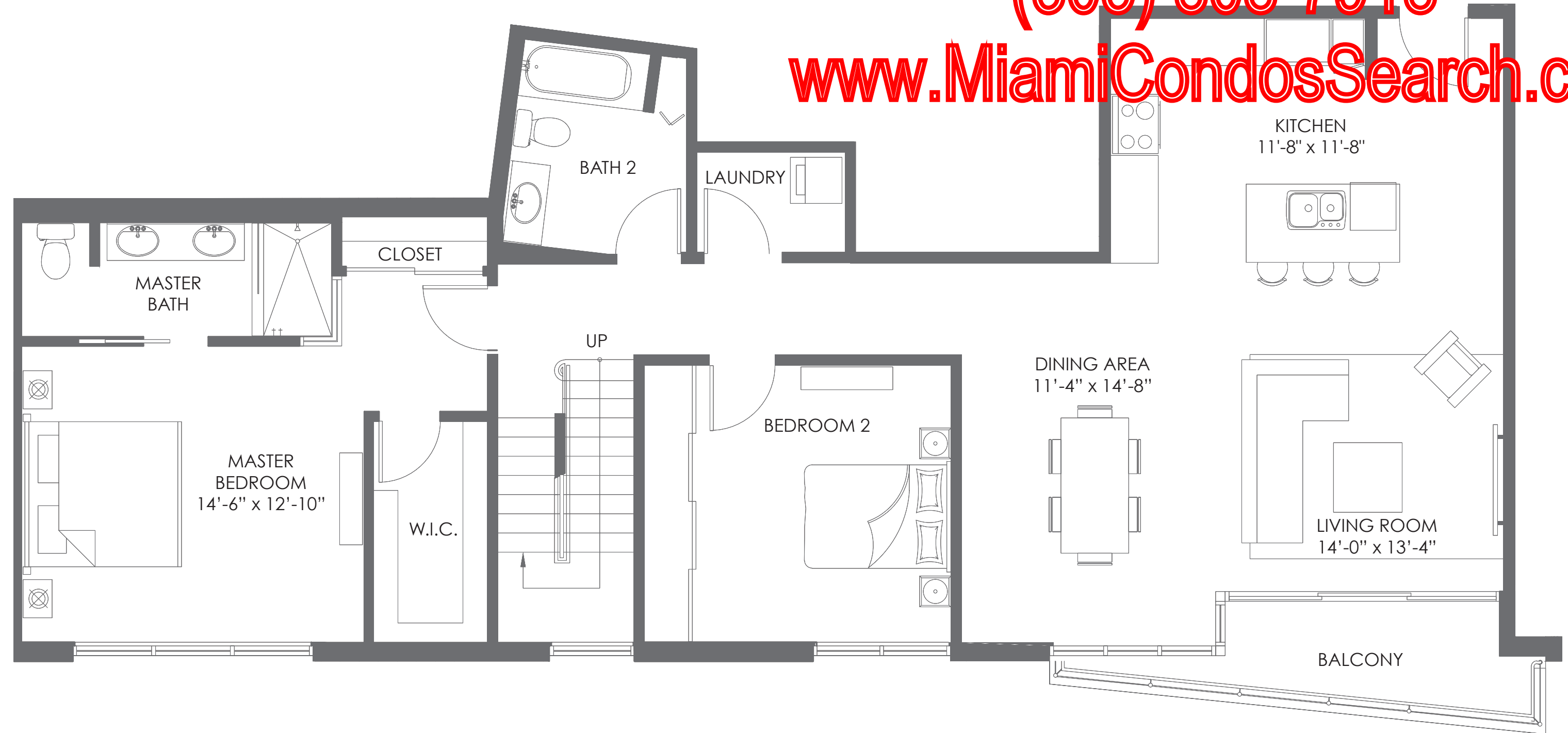
A/C AREA	1,448 S.F. (134.5 M ²)
BALCONIES	79 S.F. (7.3 M ²)
ROOF TERRACE	728 S.F. (67.6 M ²)
TOTAL	2,255 S.F. (209.4 M ²)



Daniel Hornek PA Realtor

(305) 808-7918

www.MiamiCondosSearch.com



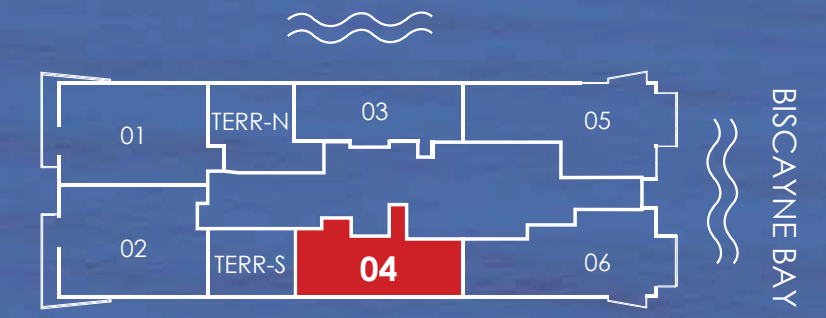
Daniel Hornek PA Realtor

(305) 808-7918

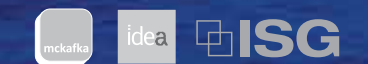
www.MiamiCondosSearch.com



ROOF TERRACE | 728 S.F. (67.6 M²)



PENTHOUSES 20TH FLOOR



Stated dimensions are measured to the exterior boundaries of the exterior walls and the centerline of interior demising walls and in fact vary from the dimensions that would be determined by using the description and definition of the "unit" set forth in the declaration. All floor plans and development plans are approximate and subject to change.