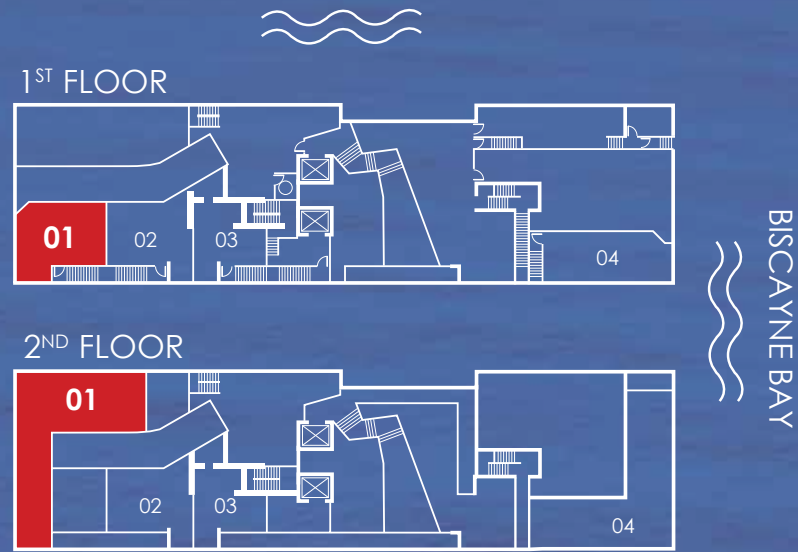


TOWNHOME 01

3 BEDROOMS / 2 1/2 BATHROOMS

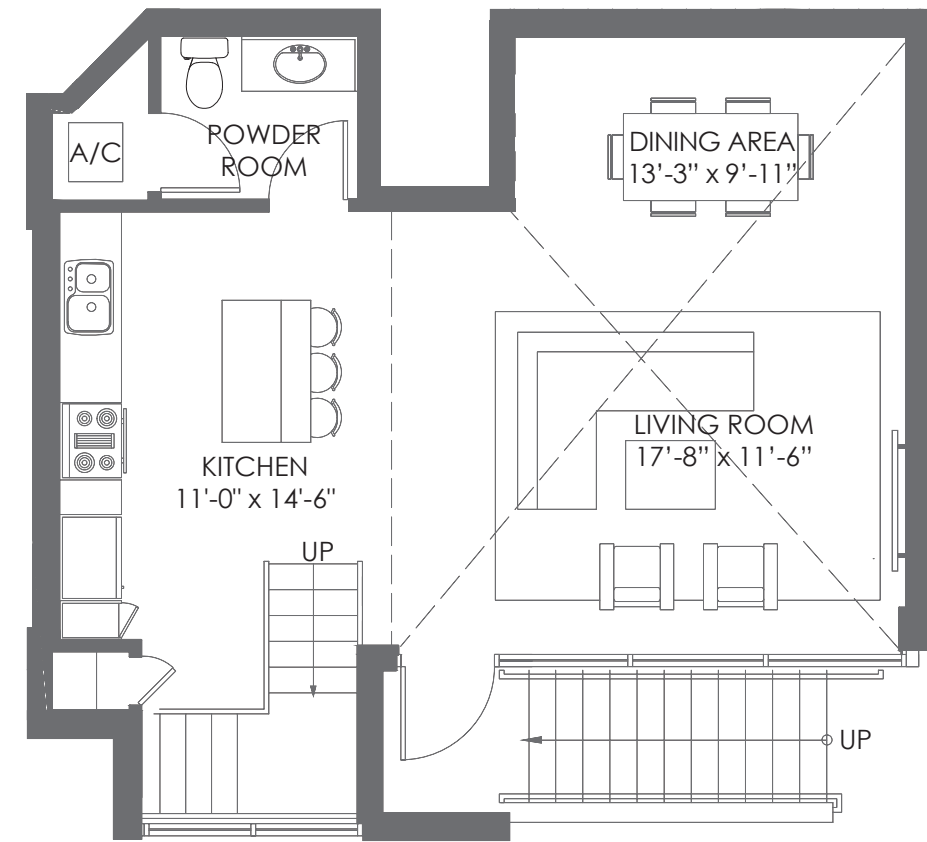
1ST FLOOR | 671 S.F. (62.3 M²)
 2ND FLOOR | 1,339 S.F. (124.4 M²)
 TOTAL | 2,010 S.F. (186.7 M²)



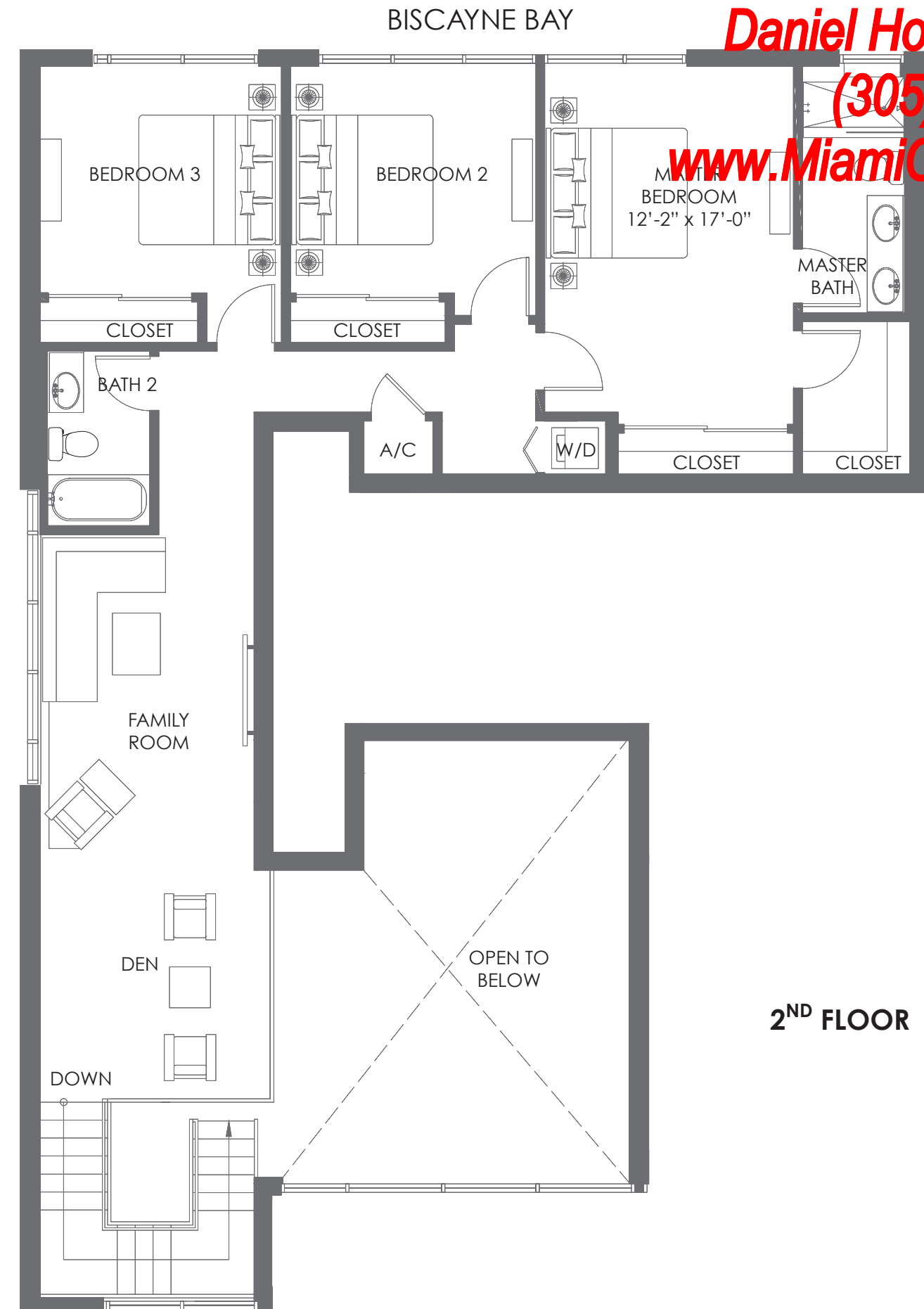
THE CRIMSON
 WATERFRONT RESIDENCES
WWW.CRIMSONMIAMI.COM



Stated dimensions are measured to the exterior boundaries of the exterior walls and the centerline of interior demising walls and in fact vary from the dimensions that would be determined by using the description and definition of the "unit" set forth in the declaration. All floor plans and development plans are approximate and subject to change.



1ST FLOOR



2ND FLOOR

BISCAYNE BAY

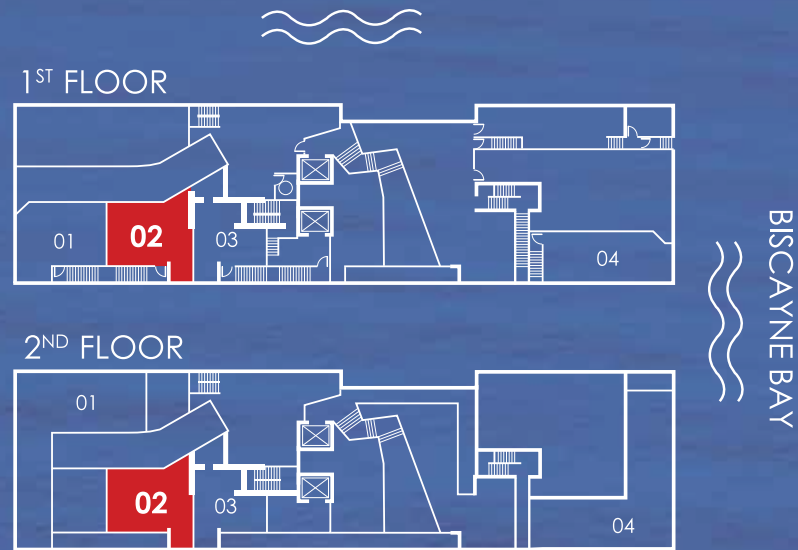
Daniel Hornek PA Realtor
(305) 808-7918

www.MiamiCondosSearch.com

TOWNHOME02

2 BEDROOMS / 2 1/2 BATHROOMS

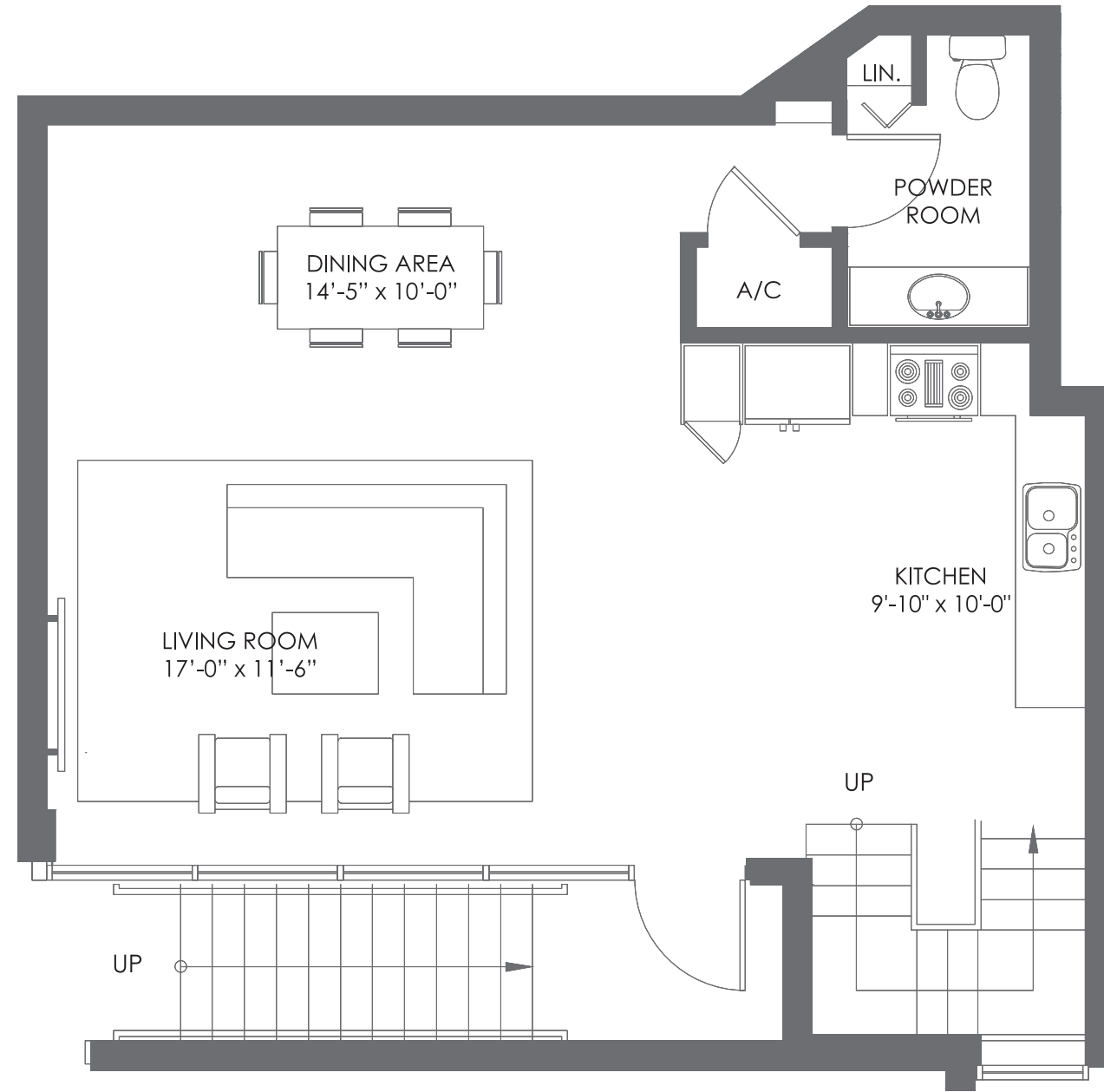
1ST FLOOR 718 S.F. (66.7 M²)
 2ND FLOOR 714 S.F. (66.3 M²)
 TOTAL 1,432 S.F. (132.9 M²)



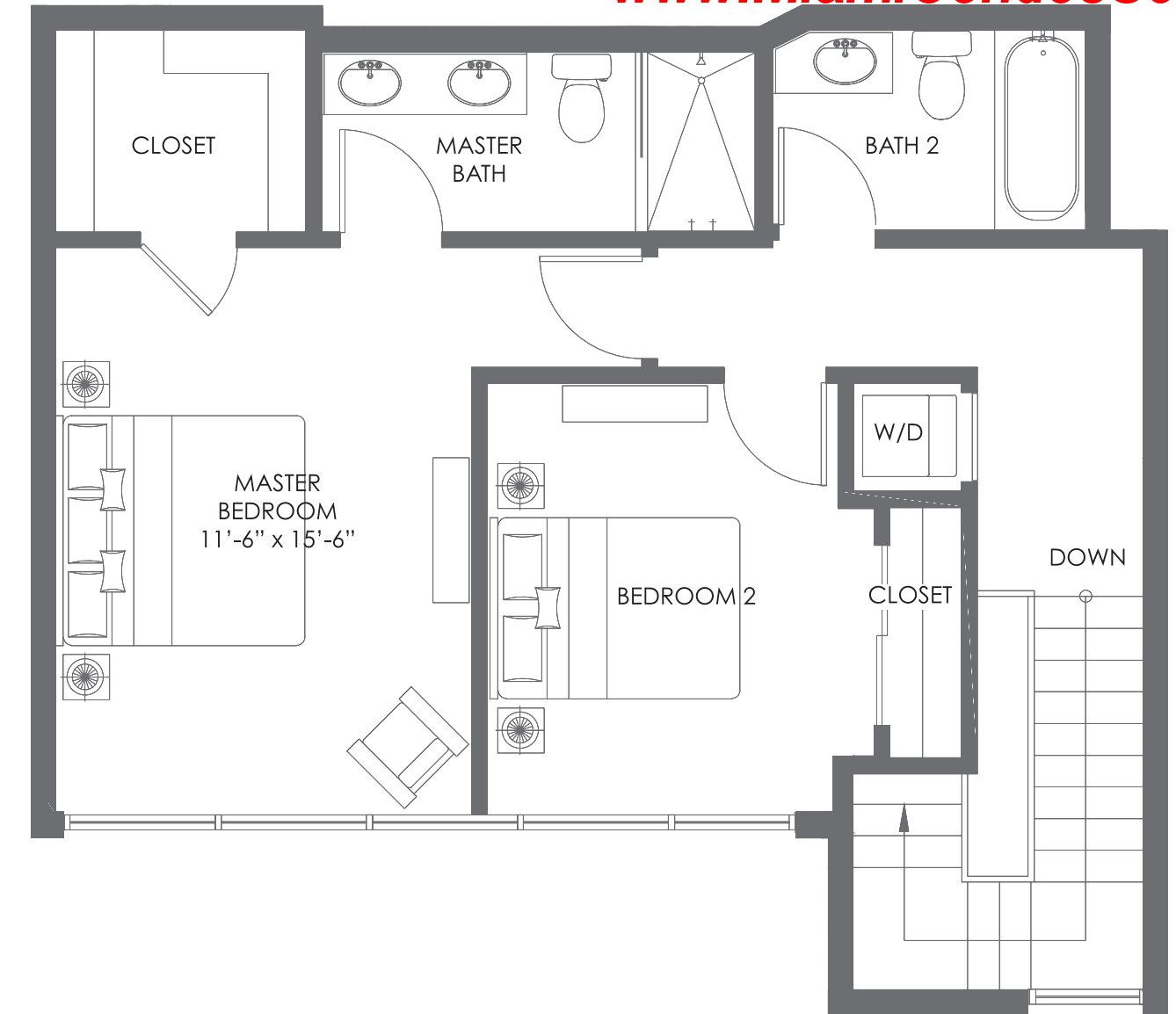
THE CRIMSON
 WATERFRONT RESIDENCES
WWW.CRIMSONMIAMI.COM



Stated dimensions are measured to the exterior boundaries of the exterior walls and the centerline of interior demising walls and in fact vary from the dimensions that would be determined by using the description and definition of the "unit" set forth in the declaration. All floor plans and development plans are approximate and subject to change.



1ST FLOOR



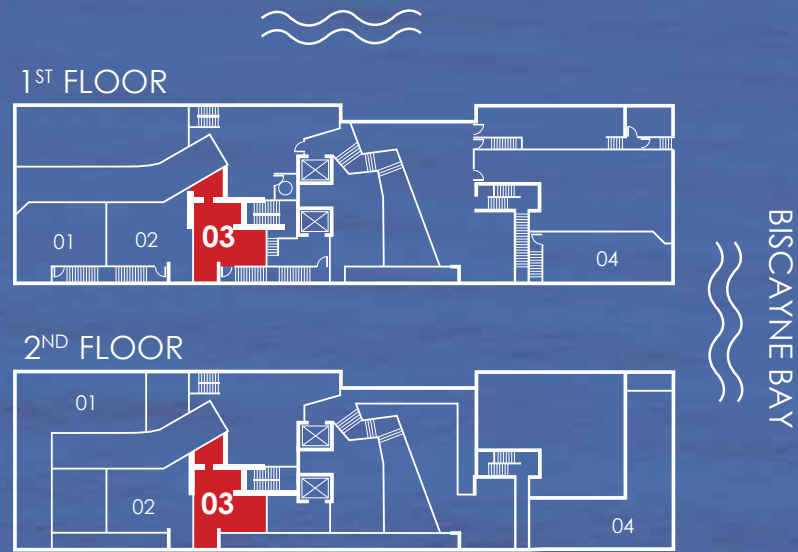
2ND FLOOR

Daniel Hornek PA Realtor
(305) 808-7918
www.MiamiCondosSearch.com

TOWNHOME03

1 BEDROOM + DEN / 1 1/2 BATHROOMS

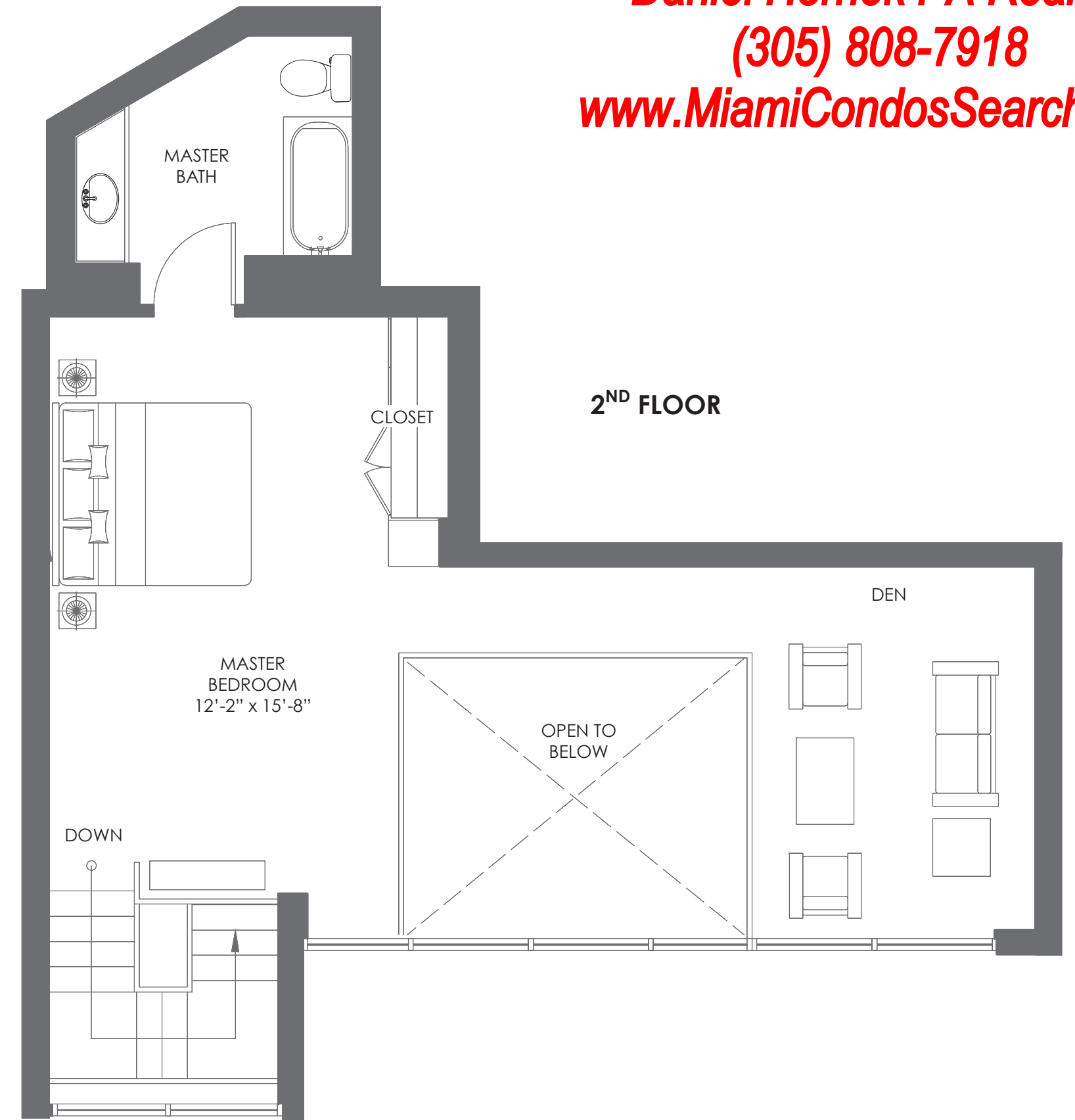
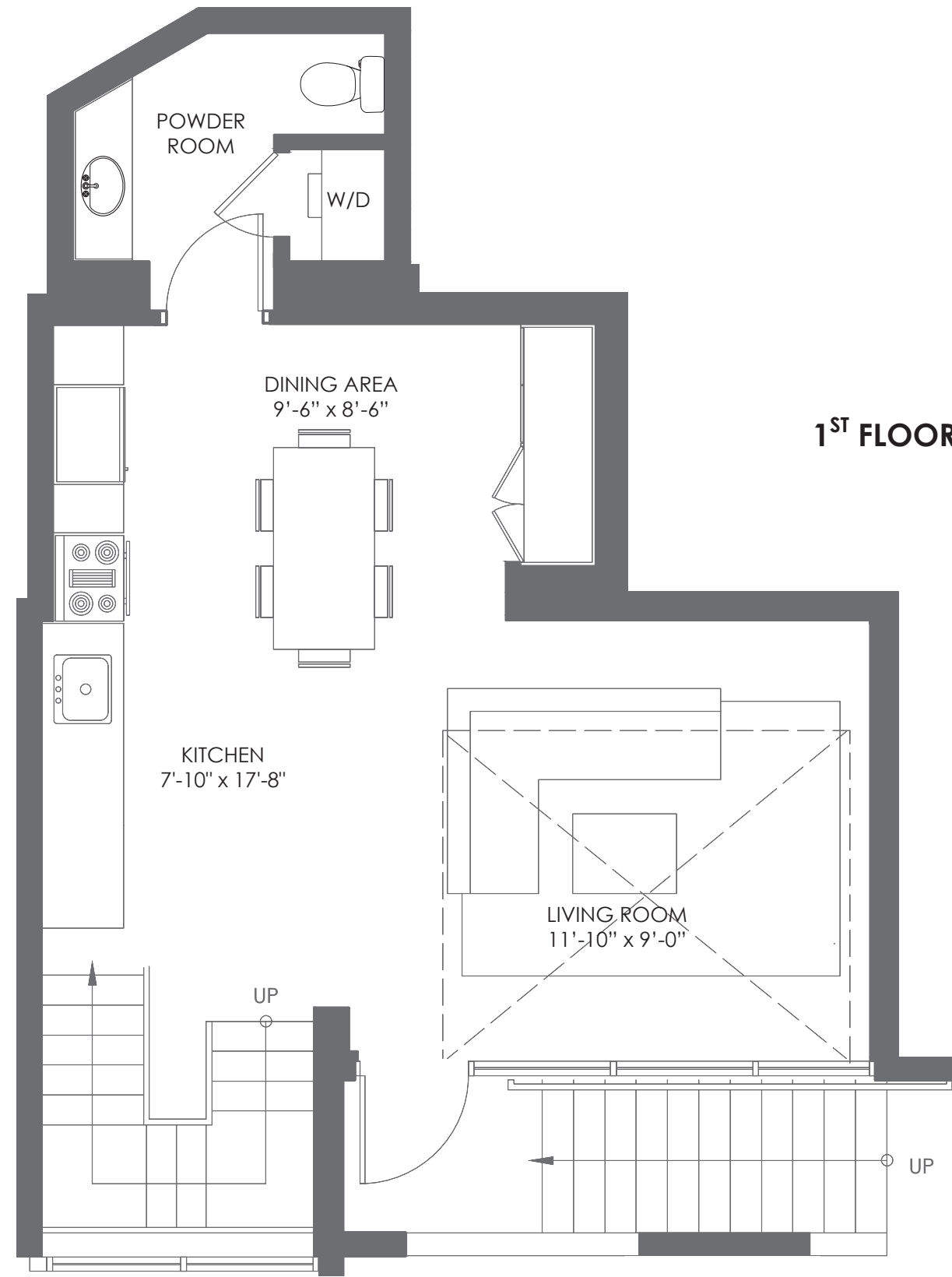
1ST FLOOR 600 S.F. (55.7 M²)
 2ND FLOOR 732 S.F. (68 M²)
 TOTAL 1,332 S.F. (123.7 M²)



THE CRIMSON
 WATERFRONT RESIDENCES
WWW.CRIMSONMIAMI.COM



Stated dimensions are measured to the exterior boundaries of the exterior walls and the centerline of interior demising walls and in fact vary from the dimensions that would be determined by using the description and definition of the "unit" set forth in the declaration. All floor plans and development plans are approximate and subject to change.

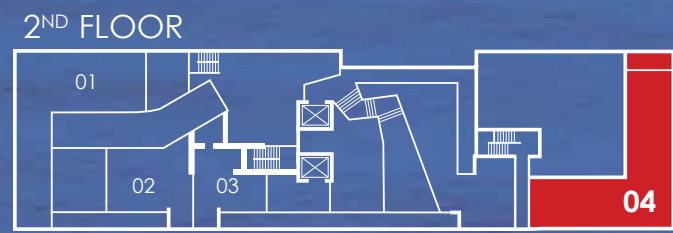
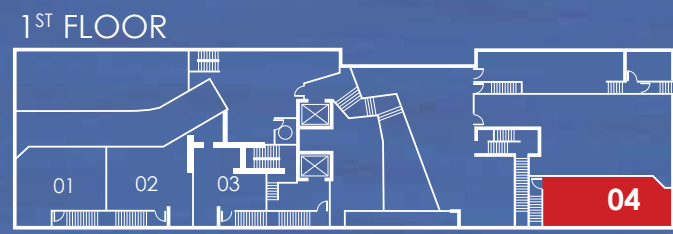


Daniel Hornek PA Realtor
(305) 808-7918
www.MiamiCondosSearch.com

TOWNHOME04

3 BEDROOMS + DEN / 2 1/2 BATHROOMS

1 ST FLOOR	763 S.F. (70.8 M ²)
2 ND FLOOR	1,209 S.F. (112.3 M ²)
BALCONIES	100 S.F. (9.2 M ²)
TOTAL	1,972 S.F. (183.2 M ²)



BISCAYNE BAY

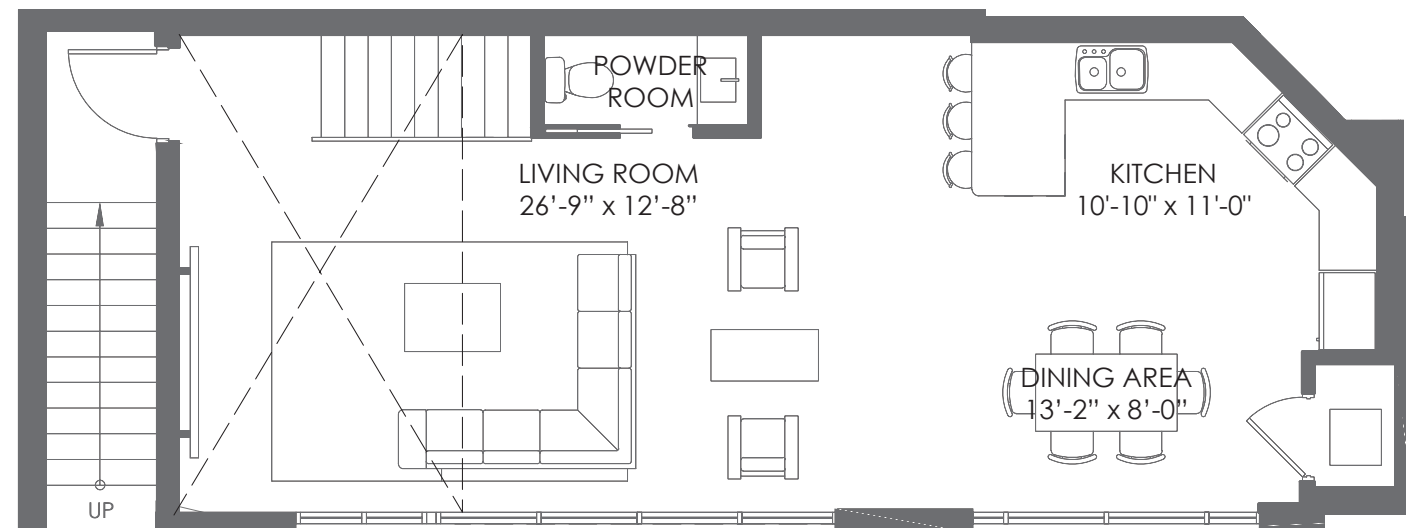
THE CRIMSON
WATERFRONT RESIDENCES
WWW.CRIMSONMIAMI.COM



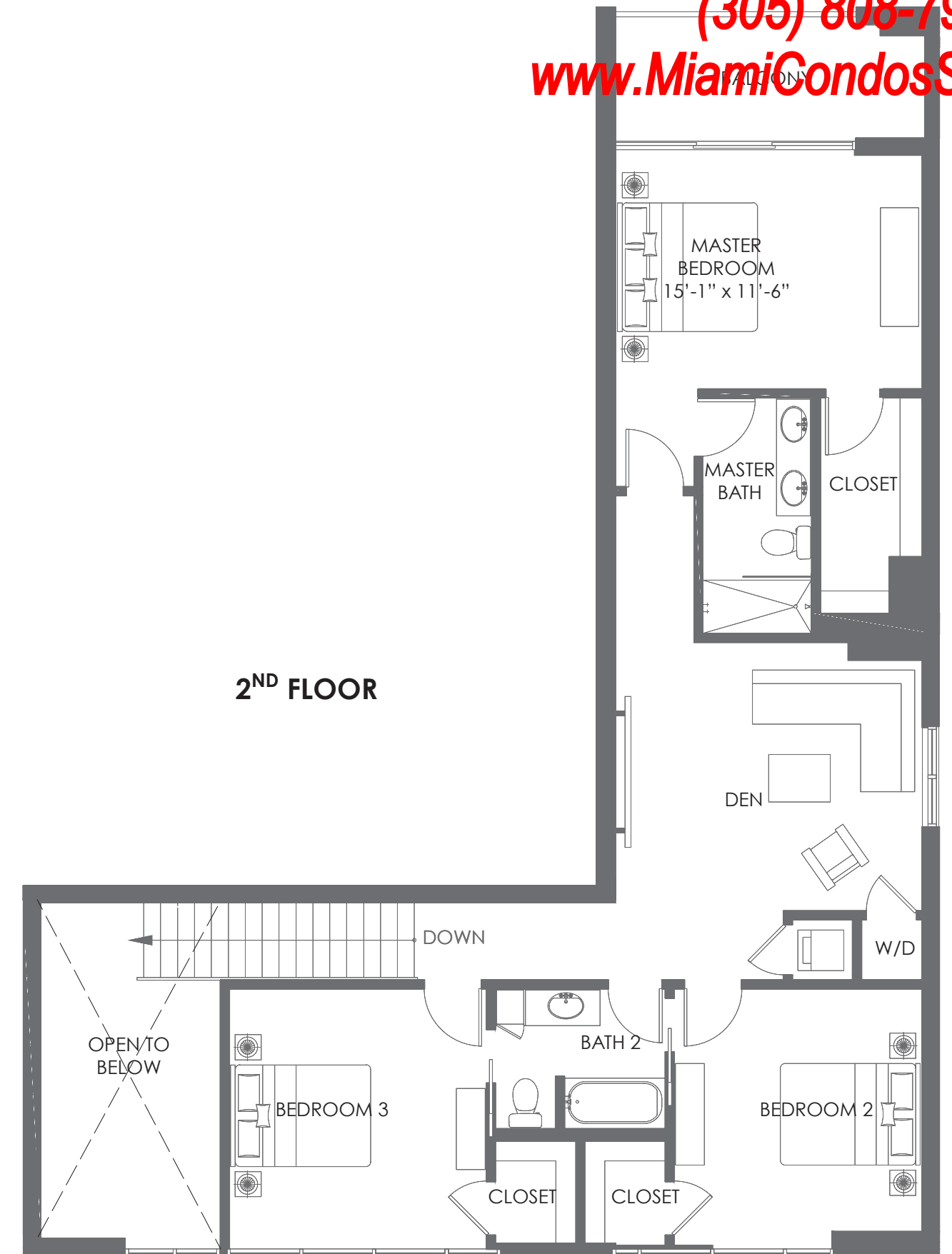
Stated dimensions are measured to the exterior boundaries of the exterior walls and the centerline of interior demising walls and in fact vary from the dimensions that would be determined by using the description and definition of the "unit" set forth in the declaration. All floor plans and development plans are approximate and subject to change.



1ST FLOOR



2ND FLOOR



BISCAYNE BAY
Daniel Hornek PA Realtor
(305) 808-7918
www.MiamiCondosSearch.com

BISCAYNE BAY