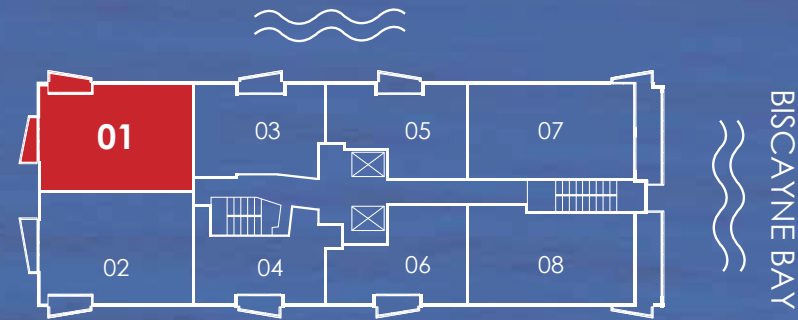


RESIDENCE 01

2 BEDROOMS / 2 BATHROOMS

A/C AREA 1,254 S.F. (116.5 M²)
BALCONIES 100 S.F. (9.2 M²)
TOTAL 1,354 S.F. (125.7 M²)



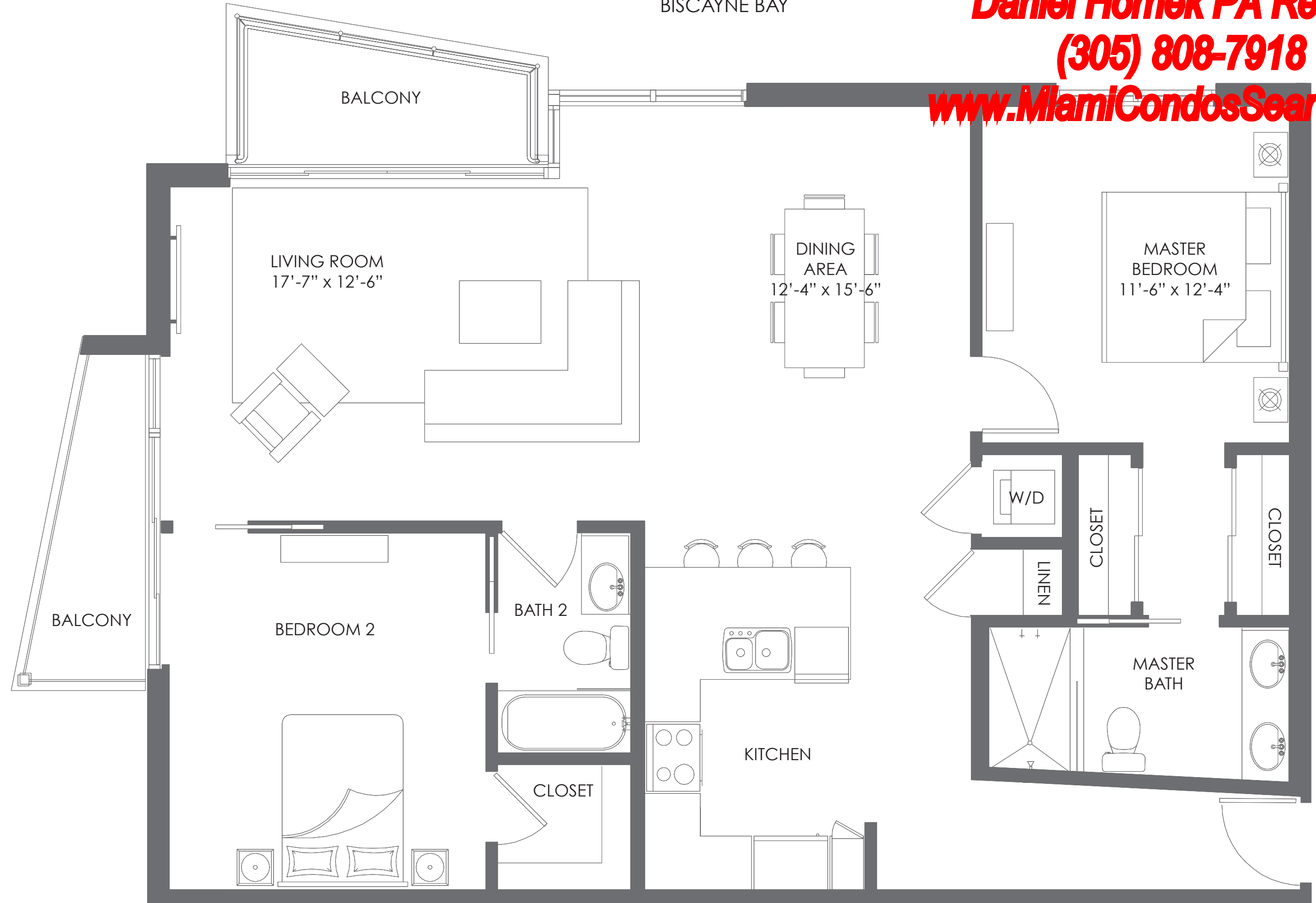
FLOORS 9 TO 18

THE CRIMSON
WATERFRONT RESIDENCES
WWW.CRIMSONMIAMI.COM



Stated dimensions are measured to the exterior boundaries of the exterior walls and the centerline of interior demising walls and in fact vary from the dimensions that would be determined by using the description and definition of the "unit" set forth in the declaration. All floor plans and development plans are approximate and subject to change.

BISCAYNE BAY



Daniel Homek PA Realtor
(305) 808-7918
www.MiamiCondosSearch.com

RESIDENCE 02

2 BEDROOMS / 2 BATHROOMS

A/C AREA 1,311 S.F. (121.8 M²)
BALCONIES 105 S.F. (9.7 M²)
TOTAL 1,416 S.F. (131.5 M²)

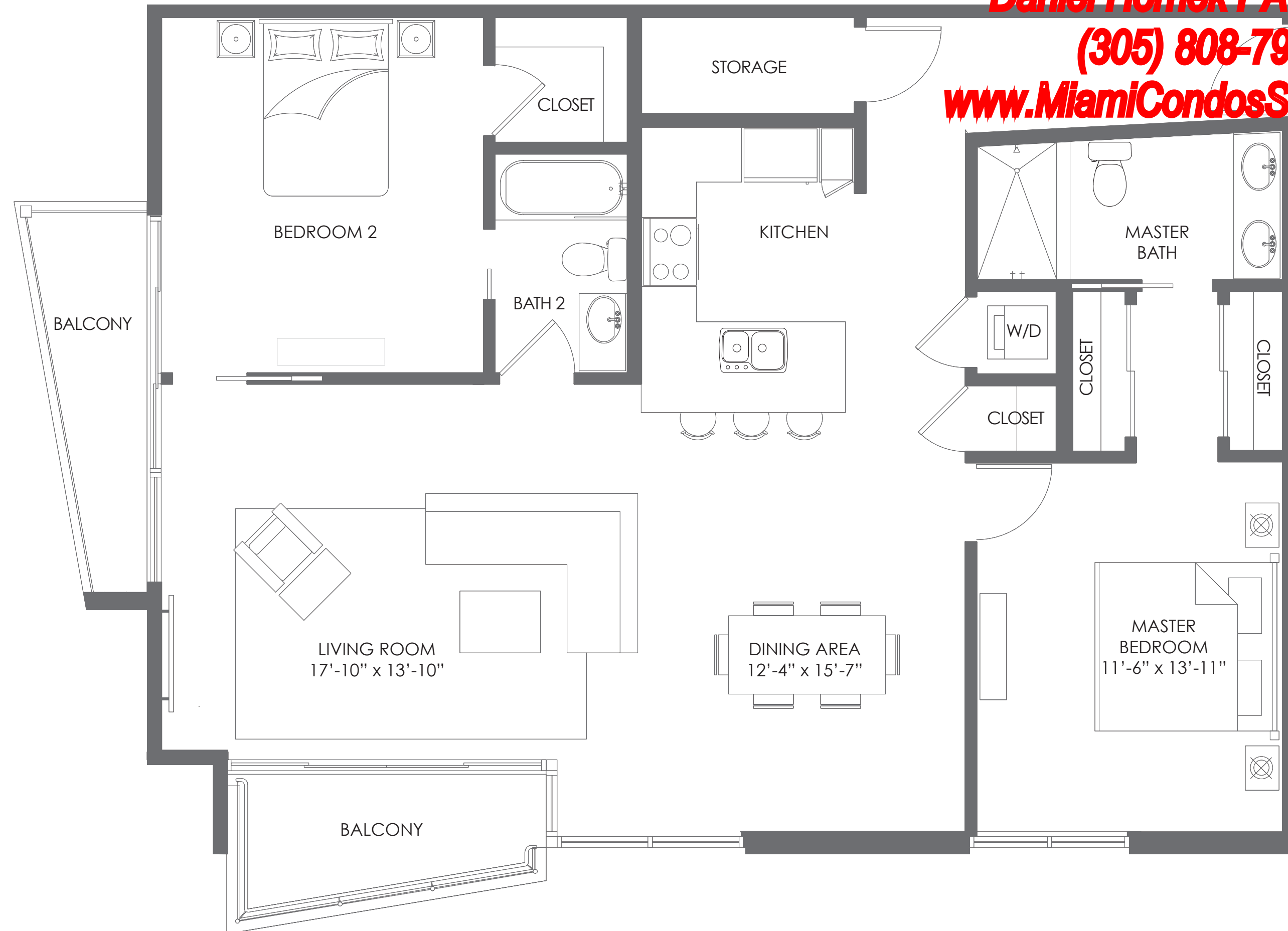


FLOORS 8 TO 18

 **THE CRIMSON**
WATERFRONT RESIDENCES
WWW.CRIMSONMIAMI.COM

Daniel Homek PA Realtor
(305) 808-7918
www.MiamiCondosSearch.com

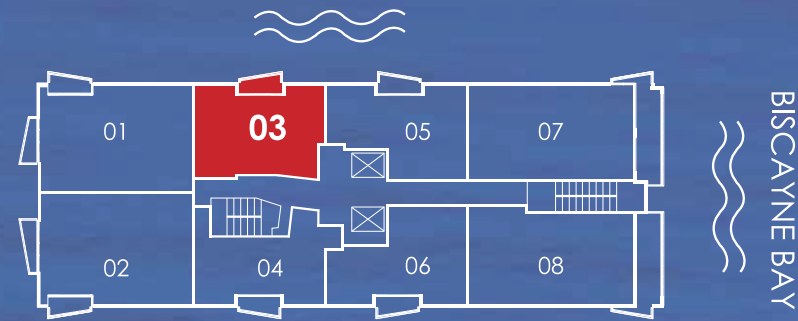


Stated dimensions are measured to the exterior boundaries of the exterior walls and the centerline of interior demising walls and in fact vary from the dimensions that would be determined by using the description and definition of the "unit" set forth in the declaration. All floor plans and development plans are approximate and subject to change.

RESIDENCE 03

1 BEDROOM + DEN / 1 BATHROOM

A/C AREA	890 S.F. (82.6 M ²)
BALCONIES	60 S.F. (5.5 M ²)
TOTAL	950 S.F. (88.1 M ²)



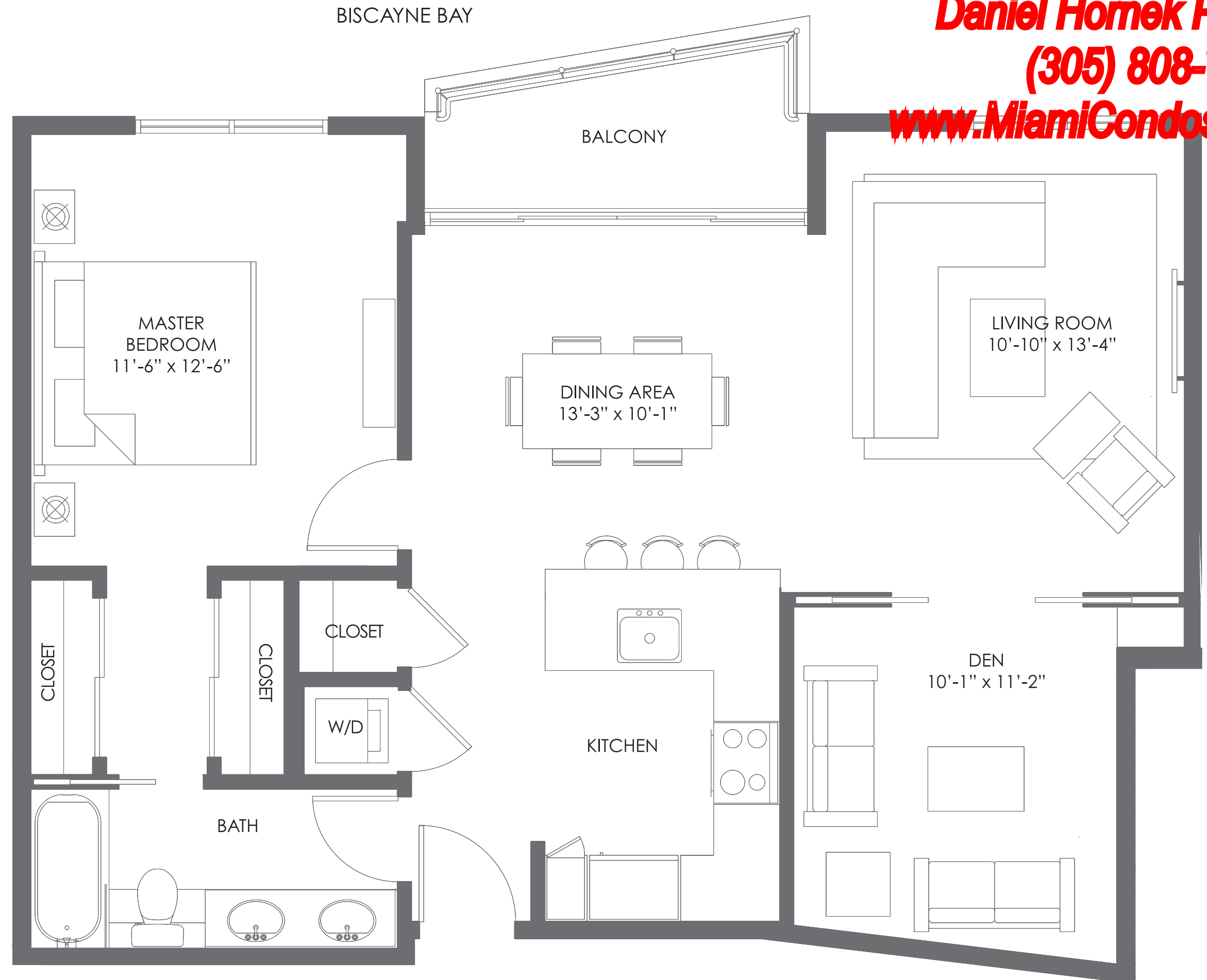
FLOORS 8 TO 18

THE CRIMSON
WATERFRONT RESIDENCES

WWW.CRIMSONMIAMI.COM



Stated dimensions are measured to the exterior boundaries of the exterior walls and the centerline of interior demising walls and in fact vary from the dimensions that would be determined by using the description and definition of the "unit" set forth in the declaration. All floor plans and development plans are approximate and subject to change.

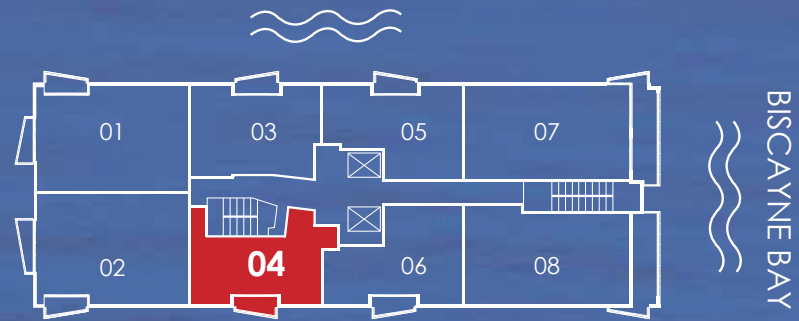


Daniel Homek PA Realtor
(305) 808-7918
www.MiamiCondosSearch.com

RESIDENCE 04

1 BEDROOM / 1 BATHROOM

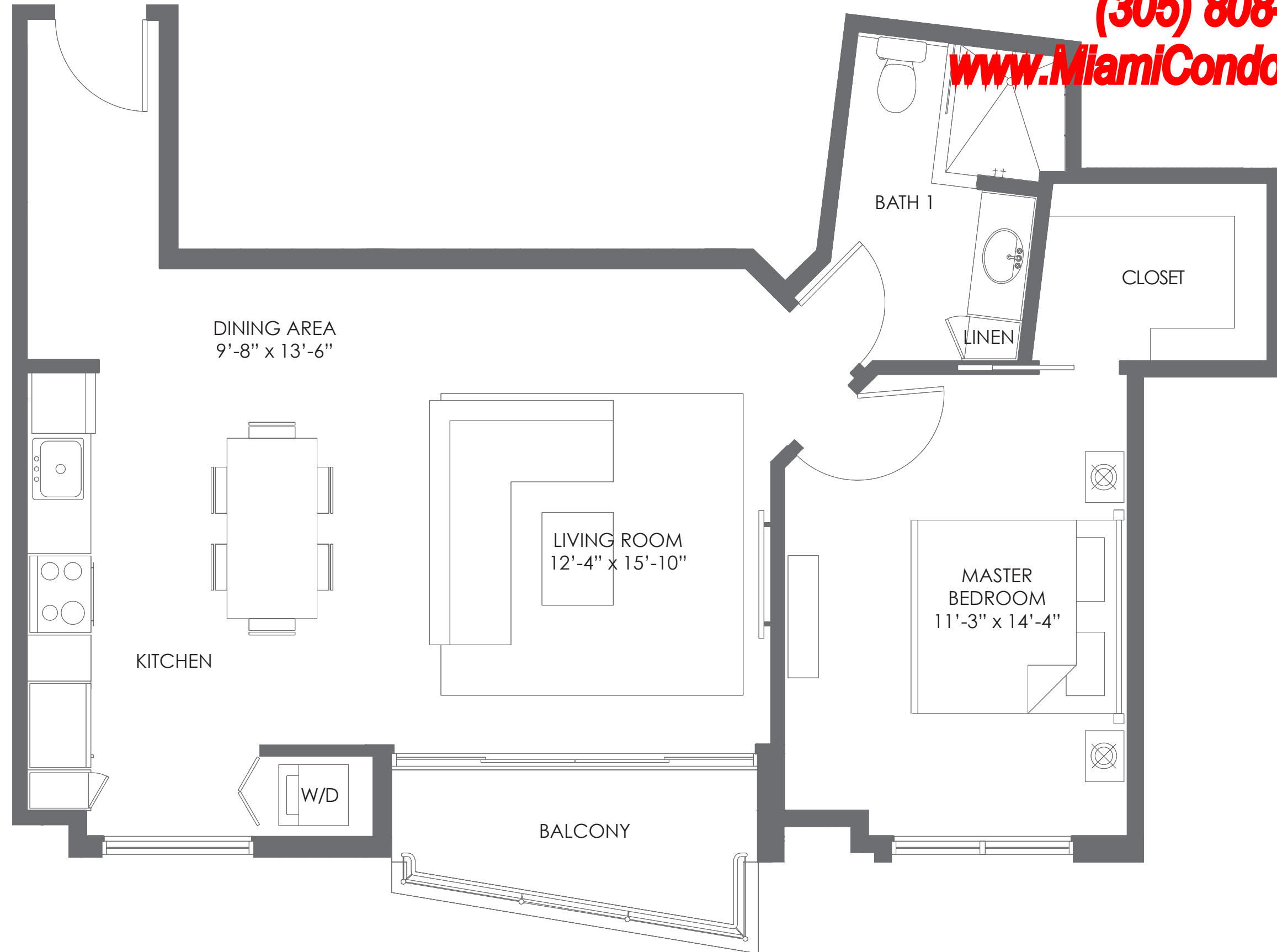
	FLOORS 8-14	FLOORS 15-18
A/C AREA	807 S.F. (74.9 M ²)	814 S.F. (75.6 M ²)
BALCONIES	60 S.F. (5.5 M ²)	60 S.F. (5.5 M ²)
TOTAL	867 S.F. (80.4 M ²)	874 S.F. (81.1 M ²)



THE CRIMSON
WATERFRONT RESIDENCES
WWW.CRIMSONMIAMI.COM



Daniel Homek PA Realtor
(305) 808-7918
www.MiamiCondosSearch.com

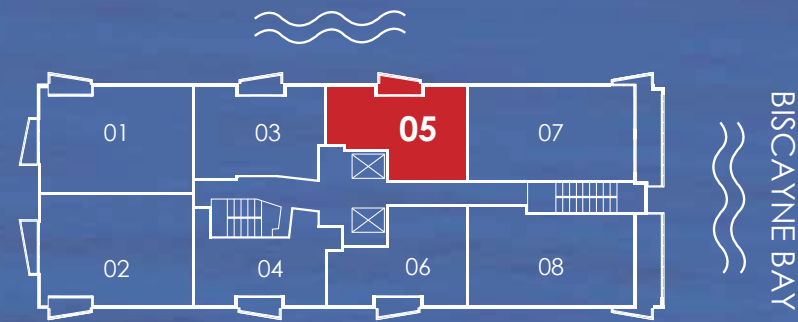


Stated dimensions are measured to the exterior boundaries of the exterior walls and the centerline of interior demising walls and in fact vary from the dimensions that would be determined by using the description and definition of the "unit" set forth in the declaration. All floor plans and development plans are approximate and subject to change.

RESIDENCE 05

1 BEDROOM / 1 BATHROOM

A/C AREA 847 S.F. (78.6 M²)
BALCONIES 60 S.F. (5.5 M²)
TOTAL 907 S.F. (84.1 M²)

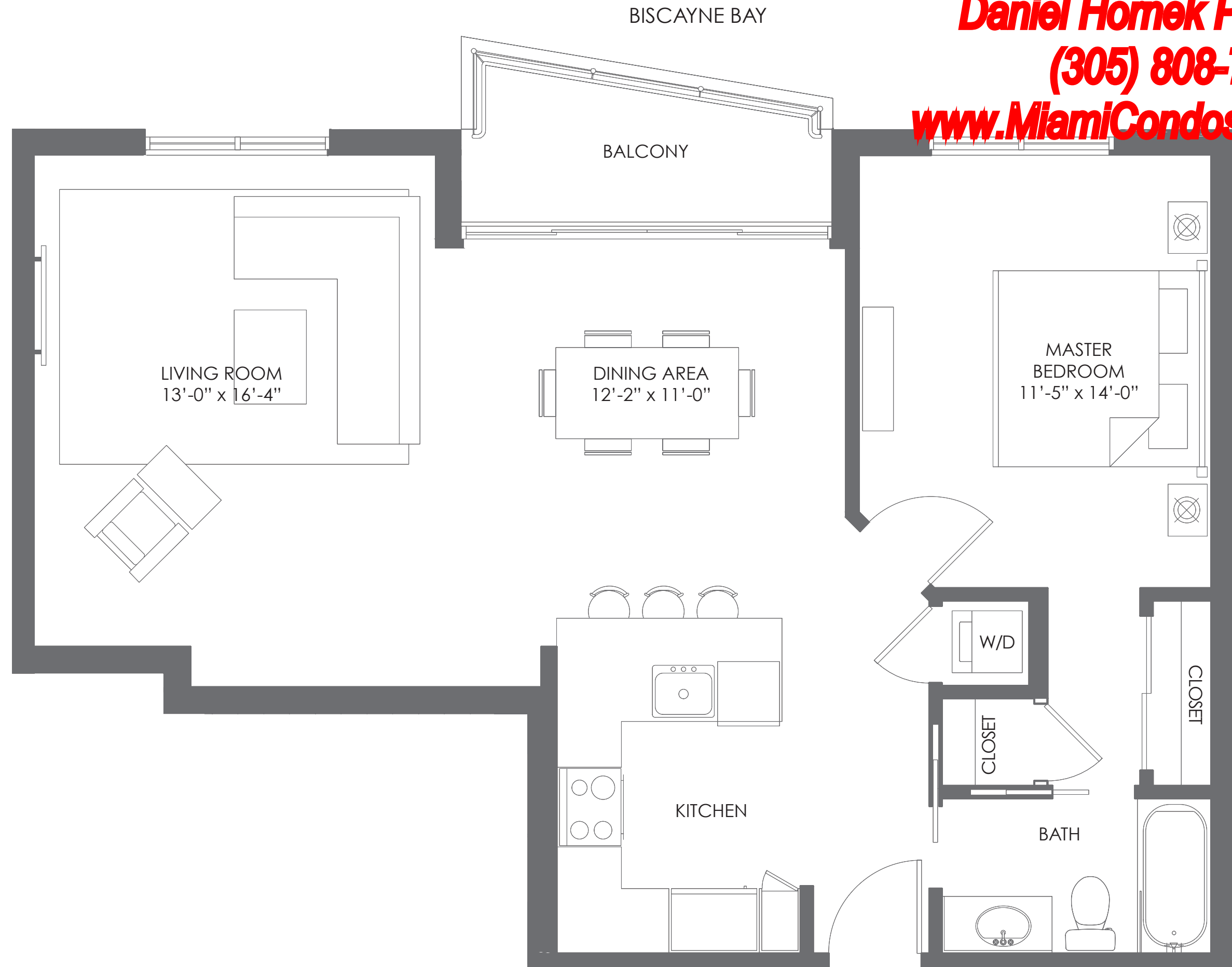


FLOORS 8 TO 18

THE CRIMSON
WATERFRONT RESIDENCES
WWW.CRIMSONMIAMI.COM



Stated dimensions are measured to the exterior boundaries of the exterior walls and the centerline of interior demising walls and in fact vary from the dimensions that would be determined by using the description and definition of the "unit" set forth in the declaration. All floor plans and development plans are approximate and subject to change.

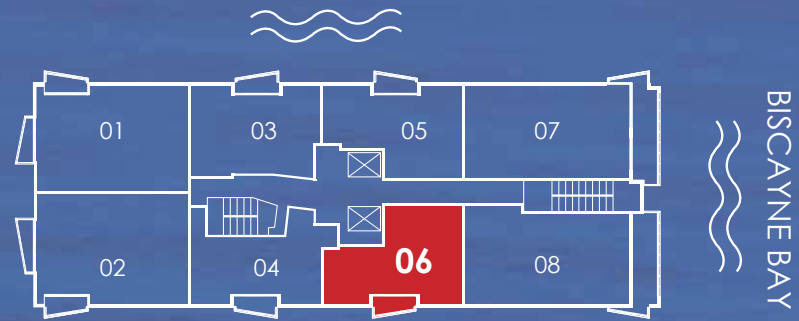


Daniel Homek PA Realtor
(305) 808-7918
www.MiamiCondosSearch.com

RESIDENCE 06

1 BEDROOM / 1 BATHROOM

	FLOORS 9-14	FLOORS 15-18
A/C AREA	867 S.F. (80.5 M ²)	878 S.F. (81.5 M ²)
BALCONIES	60 S.F. (5.5 M ²)	60 S.F. (5.5 M ²)
TOTAL	927 S.F. (86 M ²)	938 S.F. (87 M ²)

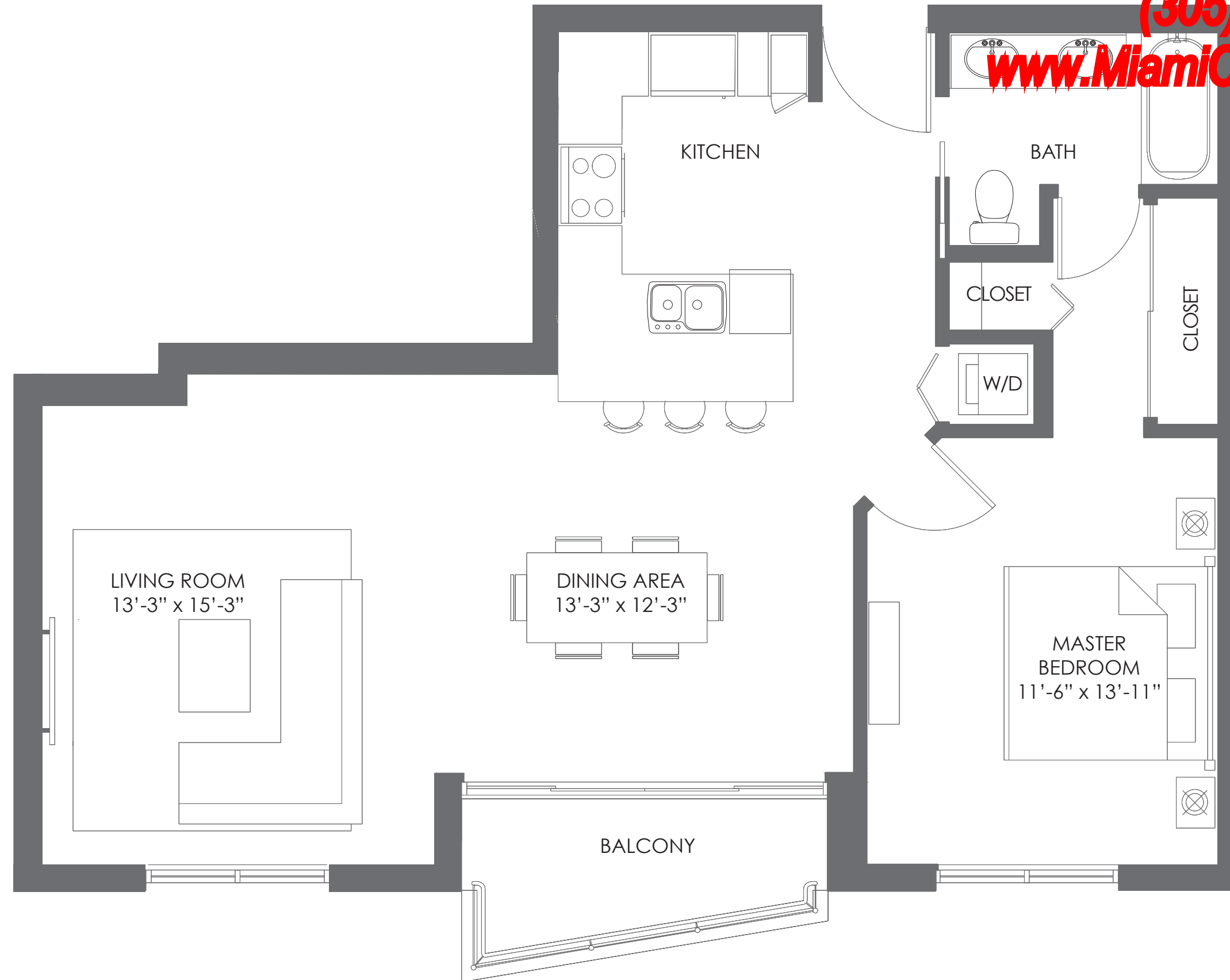


THE CRIMSON
WATERFRONT RESIDENCES
WWW.CRIMSONMIAMI.COM



Stated dimensions are measured to the exterior boundaries of the exterior walls and the centerline of interior demising walls and in fact vary from the dimensions that would be determined by using the description and definition of the "unit" set forth in the declaration. All floor plans and development plans are approximate and subject to change.

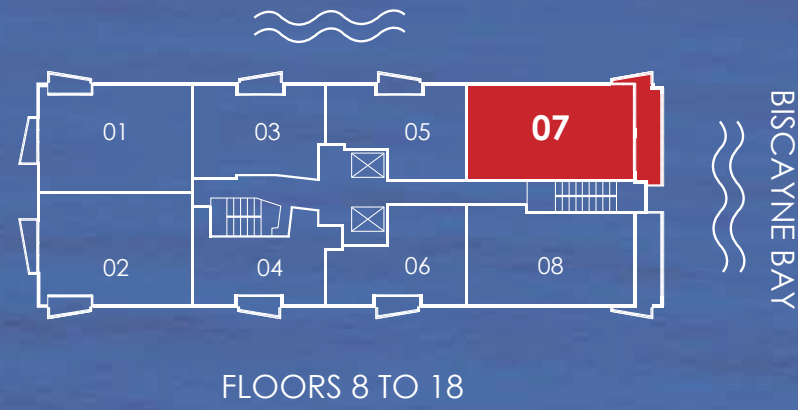
Daniel Homek PA Realtor
(305) 808-7918
www.MiamiCondosSearch.com



RESIDENCE 07

2 BEDROOMS / 2 BATHROOMS

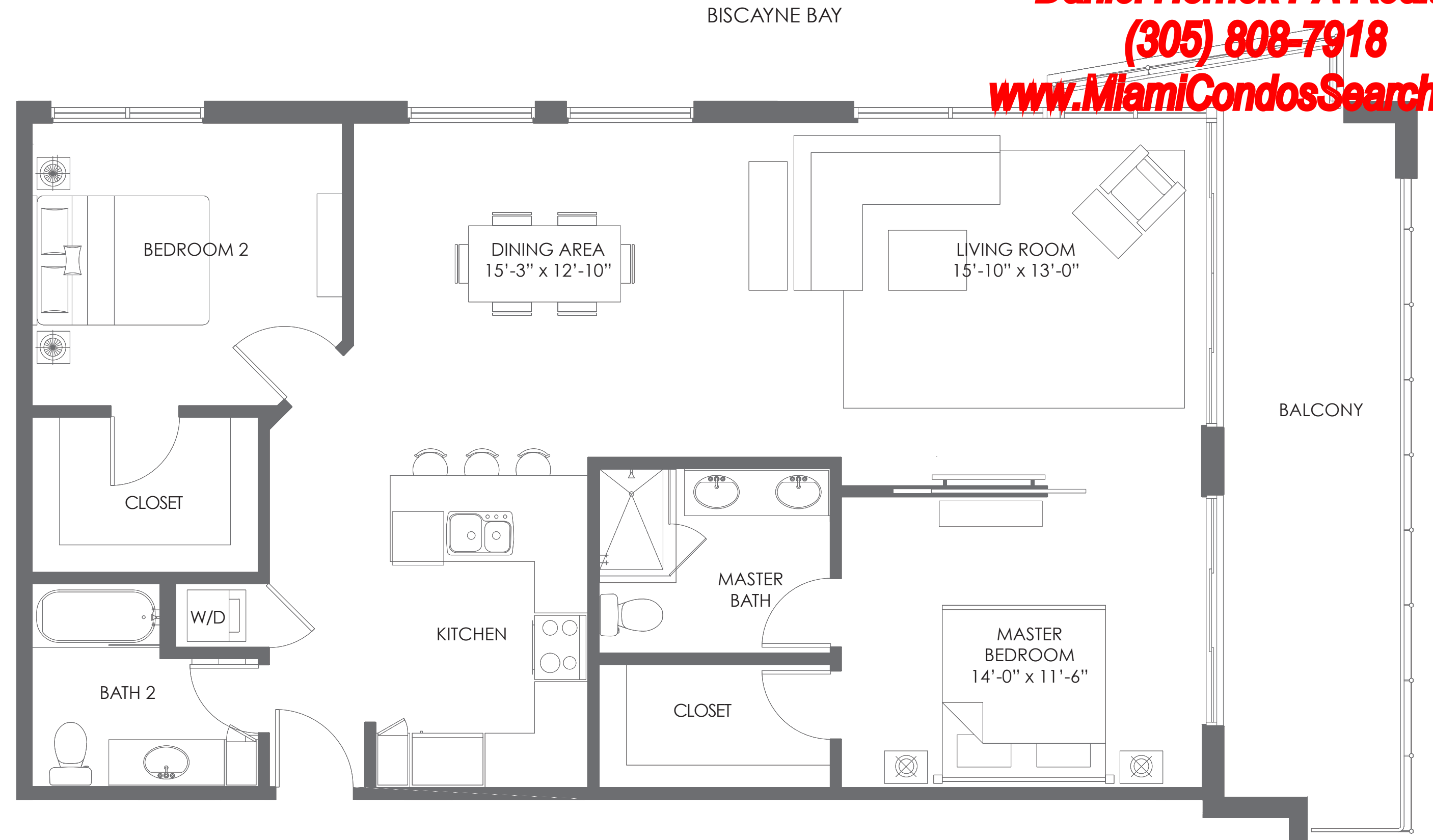
A/C AREA 1,245 S.F. (115.6 M²)
BALCONIES 221 S.F. (20.5 M²)
TOTAL 1,466 S.F. (136.1 M²)



THE CRIMSON
WATERFRONT RESIDENCES
WWW.CRIMSONMIAMI.COM



Daniel Homek PA Realtor
(305) 808-7918
www.MiamiCondosSearch.com

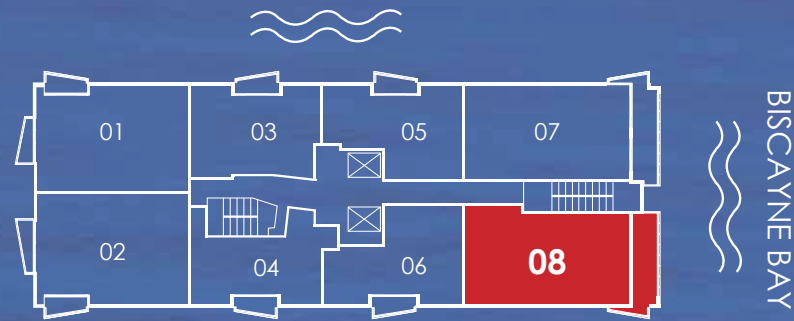


Stated dimensions are measured to the exterior boundaries of the exterior walls and the centerline of interior demising walls and in fact vary from the dimensions that would be determined by using the description and definition of the "unit" set forth in the declaration. All floor plans and development plans are approximate and subject to change.

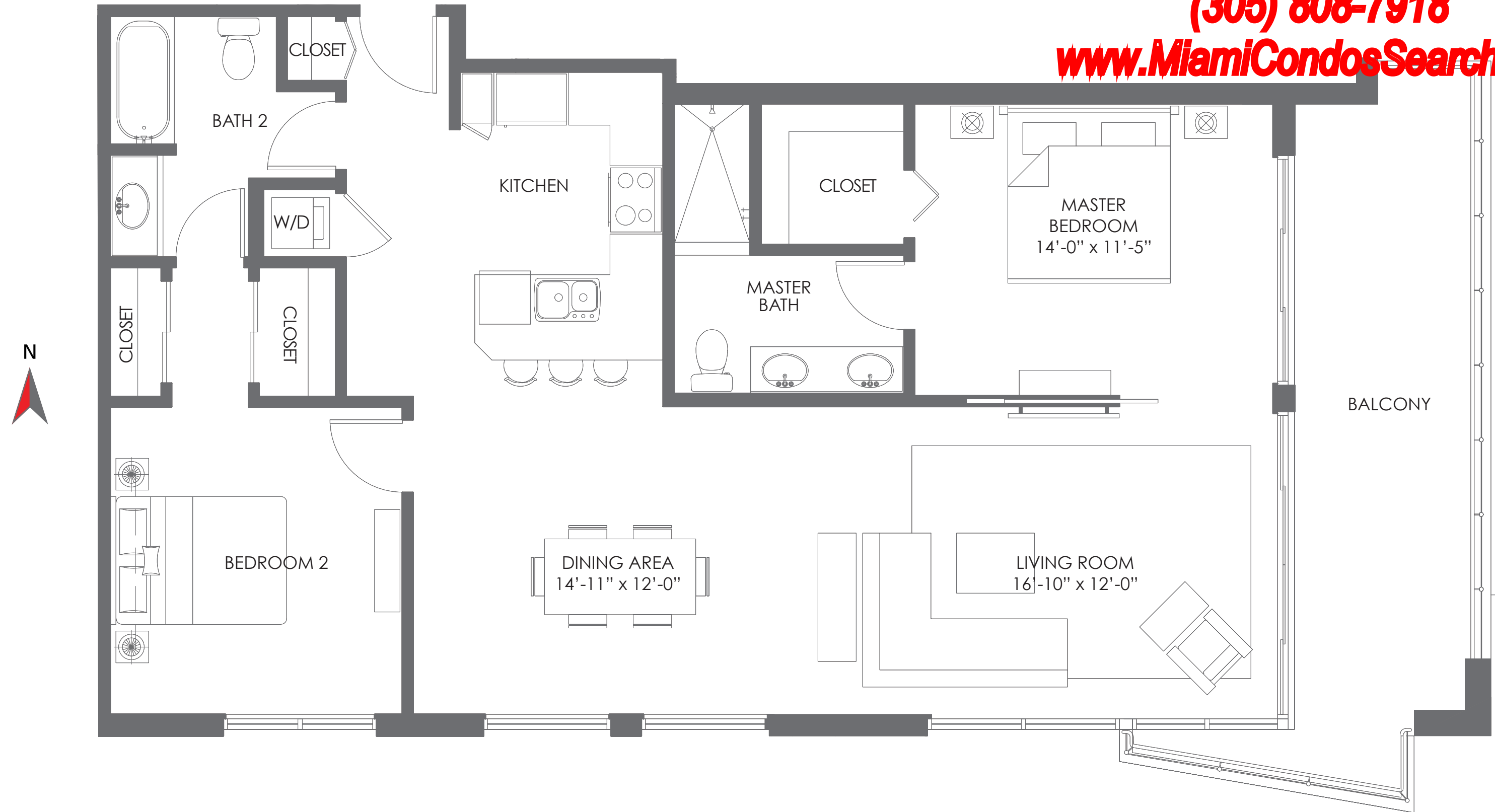
RESIDENCE 08

2 BEDROOMS / 2 BATHROOMS

	FLOORS 9-14	FLOORS 15-18
A/C AREA	1,210 S.F. (112.4 M ²)	1,220 S.F. (113.3 M ²)
BALCONIES	211 S.F. (19.6 M ²)	208 S.F. (19.3 M ²)
TOTAL	1,421 S.F. (132 M ²)	1,428 S.F. (132.6 M ²)



Daniel Homek PA Realtor
(305) 808-7918
www.MiamiCondosSearch.com



Stated dimensions are measured to the exterior boundaries of the exterior walls and the centerline of interior demising walls and in fact vary from the dimensions that would be determined by using the description and definition of the "unit" set forth in the declaration. All floor plans and development plans are approximate and subject to change.