

Daniel Hornek PA Realtor

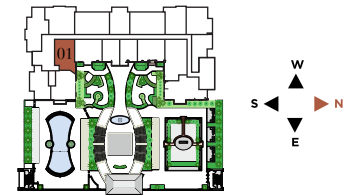
[www.MiamiCondosSearch.com](http://www.MiamiCondosSearch.com)

Phone: (305) 808.7918

**NINE**  
AT MARY BRICKELL VILLAGE

**RESIDENCE 01**  
Levels 12 thru 33  
1 Br / 1 Ba

Interior:	870 sqft	81 m <sup>2</sup>
Terrace:	124 sqft	11 m <sup>2</sup>
<hr/>		
Total:	994 sqft	92 m <sup>2</sup>



There are various methods for calculating the square footage of a condominium unit and depending upon the method of calculation, the quoted square footage of a condominium unit may vary. The square footages of the Unit shown herein are based upon the "Architectural Method" of measurement and stated dimensions are measured to the exterior boundaries of the exterior walls and the centerline of interior demising walls and in fact vary from the dimensions that would be determined by using the description and boundaries of the Unit set forth in the Declaration (which only includes the interior airspace between the perimeter walls and excludes interior structural components). Accordingly, the square footages stated herein are greater than those which would be derived by measuring only the interior area space for the Unit as the Unit is described in the Declaration. Note that measurements of rooms set forth on this or plan are generally taken at the greatest points of each given room (as if the room were a perfect rectangle), without regard for any cutouts. Accordingly, the area of the actual room will typically be smaller than the product obtained by multiplying the stated length times width. All depictions of textures, appliances, counters, cabinetry, windows and other matters of detail, are conceptual only and subject to change or modification. Seller does not make, and specially disclaims, any representation or warranty as to the actual size, dimensions or square footage of the Unit. Purchaser should refer to the description and boundaries of the Unit set forth in the recorded Declaration and make its own determination as to the area and dimensions of the Unit. These drawings are conceptual only and are for the convenience of reference.



Daniel Hornek PA Realtor

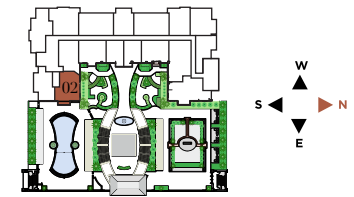
[www.MiamiCondosSearch.com](http://www.MiamiCondosSearch.com)


Phone: (305) 808.7918

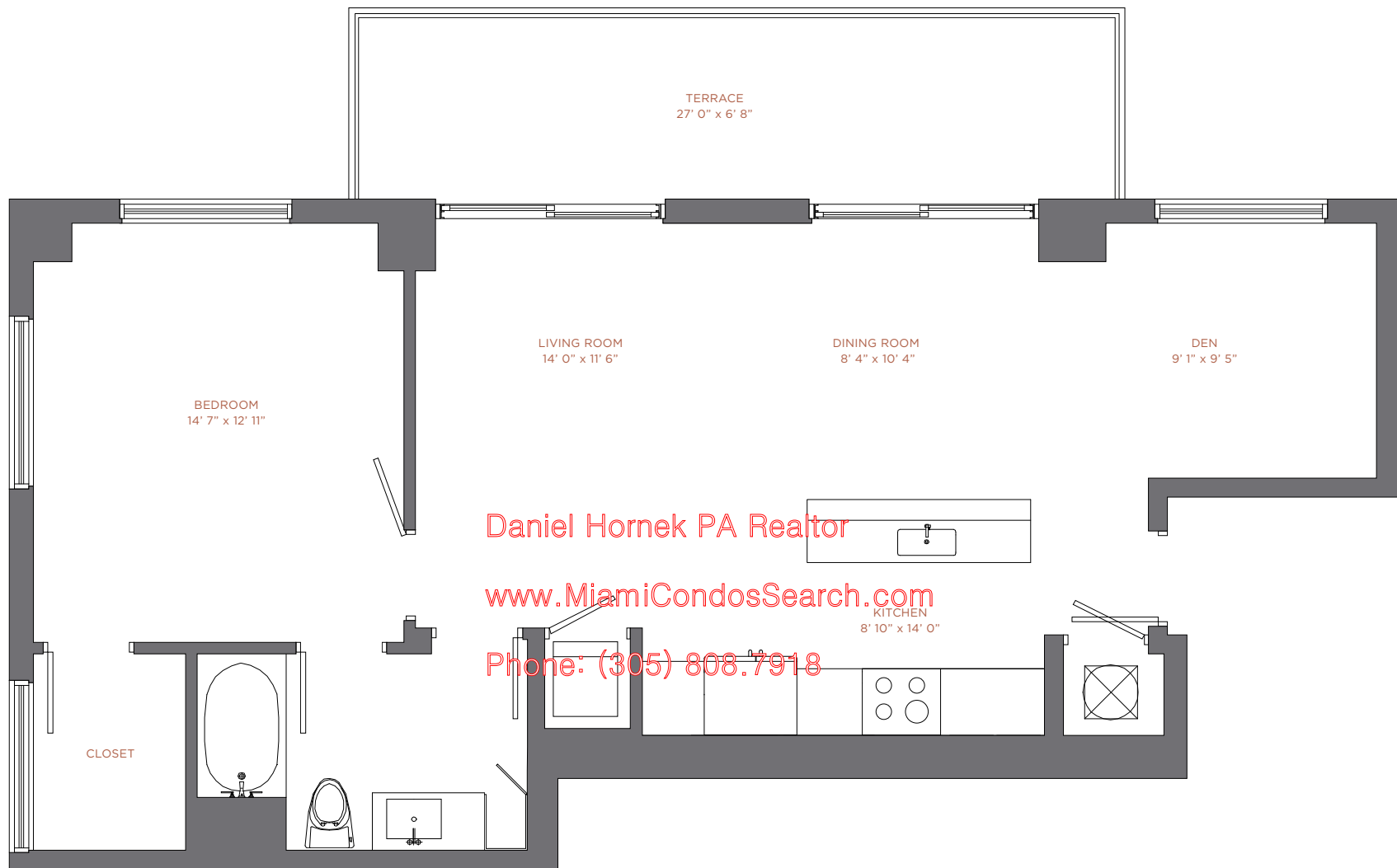
**NINE**  
AT MARY BRICKELL VILLAGE

**RESIDENCE 02**  
Levels 12 thru 33  
2 Br / 2 Ba

Interior:	1,241 sqft	115 m <sup>2</sup>
Terrace:	116 sqft	11 m <sup>2</sup>
<hr/>		
Total:	1,357 sqft	126 m <sup>2</sup>

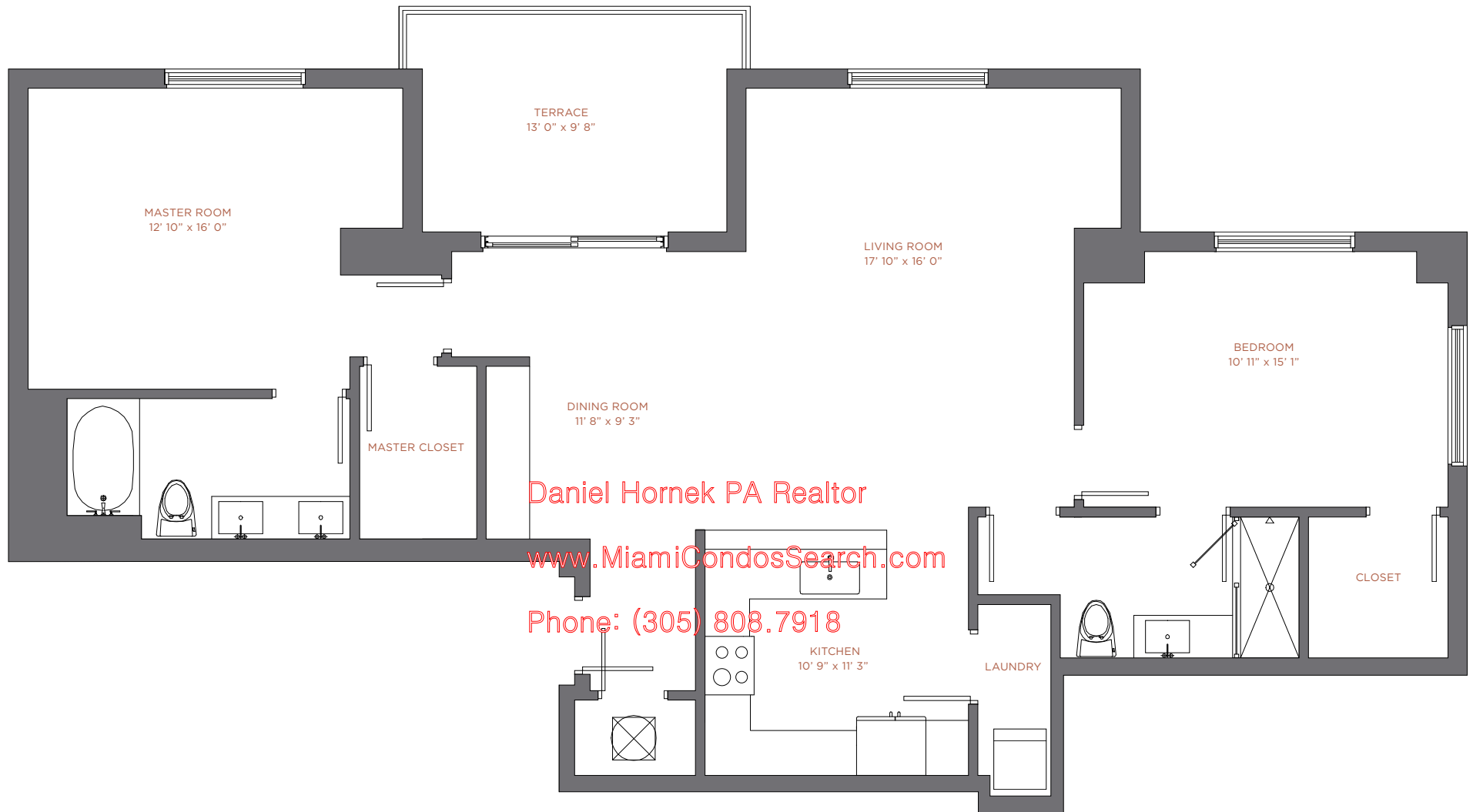


 There are various methods for calculating the square footage of a condominium unit and depending upon the method of calculation, the quoted square footage of a condominium unit may vary. The square footages of the Unit shown herein are based upon the "Architectural Method" of measurement and stated dimensions are measured to the exterior boundaries of the exterior walls and the centerline of interior demising walls and in fact vary from the dimensions that would be determined by using the description and boundaries of the Unit set forth in the Declaration (which only includes the interior airspace between the perimeter walls and excludes interior structural components). Accordingly, the square footages stated herein are greater than those which would be derived by measuring only the interior area space for the Unit as the Unit is described in the Declaration. Note that measurements of rooms set forth on this or plan are generally taken at the greatest points of each given room (as if the room were a perfect rectangle), without regard for any cutouts. Accordingly, the area of the actual room will typically be smaller than the product obtained by multiplying the stated length times width. All depictions of textures, appliances, counters, cabinetry, windows and other matters of detail, are conceptual only and subject to change or modification. Seller does not make, and specially disclaims, any representation or warranty as to the actual size, dimensions or square footage of the Unit. Purchaser should refer to the description and boundaries of the Unit set forth in the recorded Declaration and make its own determination as to the area and dimensions of the Unit. These drawings are conceptual only and are for the convenience of reference.



<div><div>NINE</div><div>AT MARY BRICKELL VILLAGE</div></div>	RESIDENCE 03		
	Levels 12 thru 33		
	1 Br / 1 Ba + Den		
	Interior:	937 sqft	87 m <sup>2</sup>
	Terrace:	180 sqft	17 m <sup>2</sup>
	Total:	1,117 sqft	104 m <sup>2</sup>

There are various methods for calculating the square footage of a condominium unit and depending upon the method of calculation, the quoted square footage of a condominium unit may vary. The square footages of the Unit shown herein are based upon the "Architectural Method" of measurement and stated dimensions are measured to the exterior boundaries of the exterior walls and the centerline of interior demising walls and in fact vary from the dimensions that would be determined by using the description and boundaries of the Unit set forth in the Declaration (which only includes the interior airspace between the perimeter walls and excludes interior structural components). Accordingly, the square footages stated herein are greater than those which would be derived by measuring only the interior area space for the Unit as the Unit is described in the Declaration. Note that measurements of rooms set forth on this or plan are generally taken at the greatest points of each given room (as if the room were a perfect rectangle), without regard for any cutouts. Accordingly, the area of the actual room will typically be smaller than the product obtained by multiplying the stated length times width. All depictions of textures, appliances, counters, cabinetry, windows and other matters of detail, are conceptual only and subject to change or modification. Seller does not make, and specially disclaims, any representation or warranty as to the actual size, dimensions or square footage of the Unit. Purchaser should refer to the description and boundaries of the Unit set forth in the recorded Declaration and make its own determination as to the area and dimensions of the Unit. These drawings are conceptual only and are for the convenience of reference.



Daniel Hornek PA Realtor

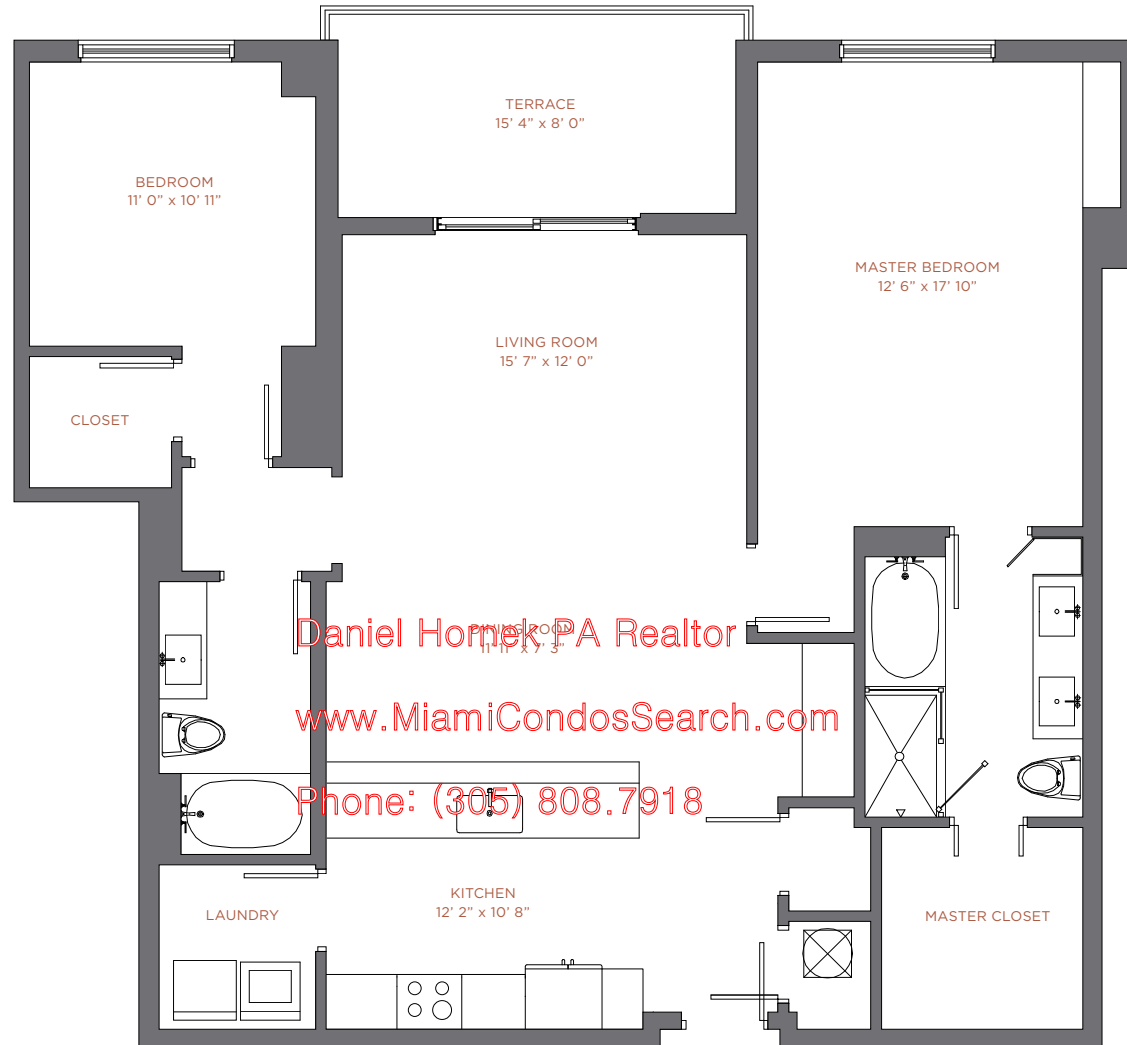
[www.MiamiCondosSearch.com](http://www.MiamiCondosSearch.com)

Phone: (305) 808.7918

	<b>RESIDENCE 04</b> Levels 12 thru 33 2 Br / 2 Ba	Interior: 1,366 sqft 127 m <sup>2</sup> Terrace: 131 sqft 13 m <sup>2</sup>	
		Total: 1,497 sqft 140 m <sup>2</sup>	

There are various methods for calculating the square footage of a condominium unit and depending upon the method of calculation, the quoted square footage of a condominium unit may vary. The square footages of the Unit shown herein are based upon the "Architectural Method" of measurement and stated dimensions are measured to the exterior boundaries of the exterior walls and the centerline of interior demising walls and in fact vary from the dimensions that would be determined by using the description and boundaries of the Unit set forth in the Declaration (which only includes the interior airspace between the perimeter walls and excludes interior structural components). Accordingly, the square footages stated herein are greater than those which would be derived by measuring only the interior area space for the Unit as the Unit is described in the Declaration. Note that measurements of rooms set forth on this or plan are generally taken at the greatest points of each given room (as if the room were a perfect rectangle), without regard for any cutouts. Accordingly, the area of the actual room will typically be smaller than the product obtained by multiplying the stated length times width. All depictions of textures, appliances, counters, cabinetry, windows and other matters of detail, are conceptual only and subject to change or modification. Seller does not make, and specially disclaims, any representation or warranty as to the actual size, dimensions or square footage of the Unit. Purchaser should refer to the description and boundaries of the Unit set forth in the recorded Declaration and make its own determination as to the area and dimensions of the Unit. These drawings are conceptual only and are for the convenience of reference.





Daniel Hornik, PA Realtor

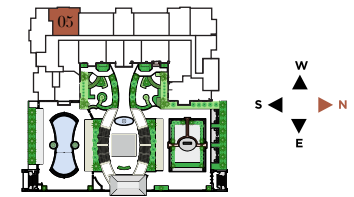
[www.MiamiCondosSearch.com](http://www.MiamiCondosSearch.com)

Phone: (305) 808.7918

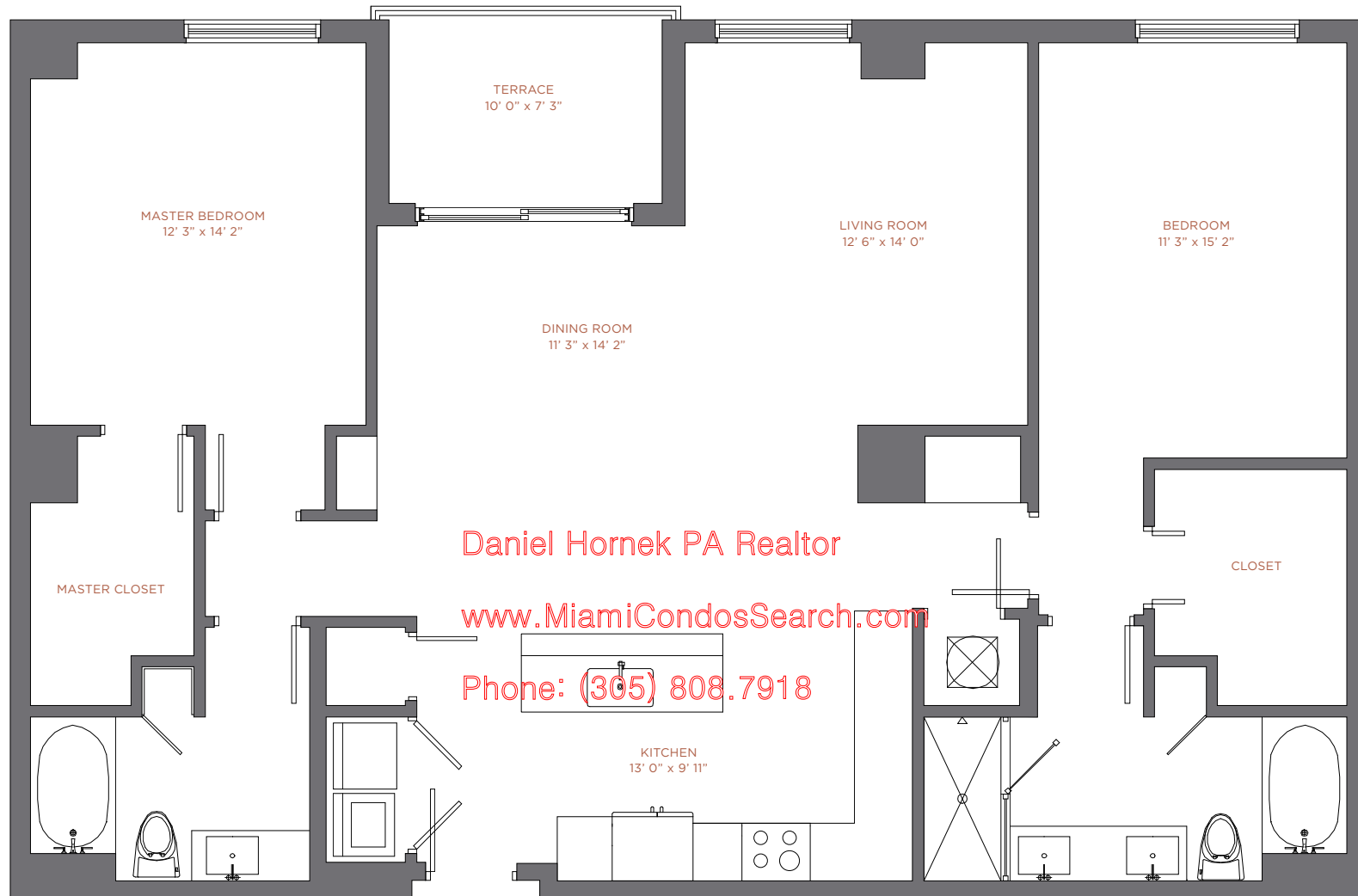
**NINE**  
AT MARY BRICKELL VILLAGE

**RESIDENCE 05**  
Levels 12 thru 33  
2 Br / 2 Ba

Interior:	1,390 sqft	129 m <sup>2</sup>
Terrace:	124 sqft	12 m <sup>2</sup>
<hr/>		
Total:	1,514 sqft	141 m <sup>2</sup>



There are various methods for calculating the square footage of a condominium unit and depending upon the method of calculation, the quoted square footage of a condominium unit may vary. The square footages of the Unit shown herein are based upon the "Architectural Method" of measurement and stated dimensions are measured to the exterior boundaries of the exterior walls and the centerline of interior demising walls and in fact vary from the dimensions that would be determined by using the description and boundaries of the Unit set forth in the Declaration (which only includes the interior airspace between the perimeter walls and excludes interior structural components). Accordingly, the square footages stated herein are greater than those which would be derived by measuring only the interior area space for the Unit as the Unit is described in the Declaration. Note that measurements of rooms set forth on this or plan are generally taken at the greatest points of each given room (as if the room were a perfect rectangle), without regard for any cutouts. Accordingly, the area of the actual room will typically be smaller than the product obtained by multiplying the stated length times width. All depictions of textures, appliances, counters, cabinetry, windows and other matters of detail, are conceptual only and subject to change or modification. Seller does not make, and specially disclaims, any representation or warranty as to the actual size, dimensions or square footage of the Unit. Purchaser should refer to the description and boundaries of the Unit set forth in the recorded Declaration and make its own determination as to the area and dimensions of the Unit. These drawings are conceptual only and are for the convenience of reference.



Daniel Hornek PA Realtor

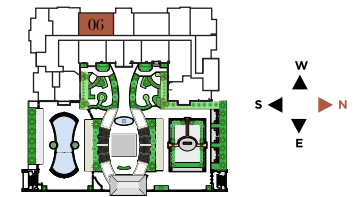
[www.MiamiCondosSearch.com](http://www.MiamiCondosSearch.com)

Phone: (305) 808.7918

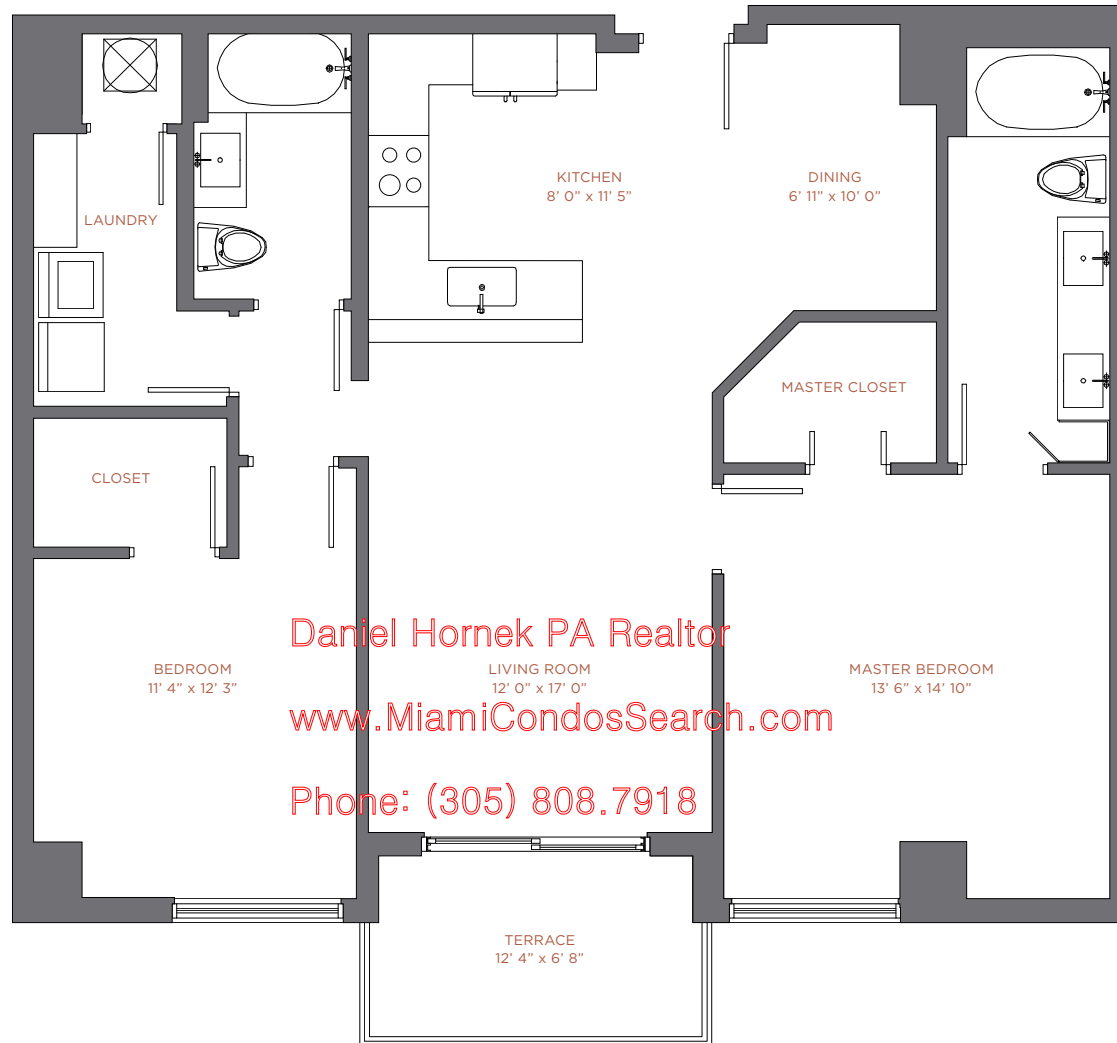
**NINE**  
AT MARY BRICKELL VILLAGE

**RESIDENCE 06**  
Levels 12 thru 33  
2 Br / 2 Ba

Interior:	1,484 sqft	138 m <sup>2</sup>
Terrace:	73 sqft	7 m <sup>2</sup>
<hr/>		
Total:	1,557 sqft	145 m <sup>2</sup>



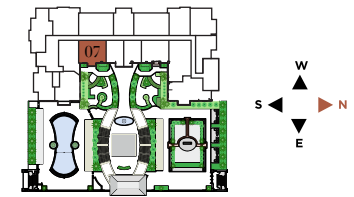
There are various methods for calculating the square footage of a condominium unit and depending upon the method of calculation, the quoted square footage of a condominium unit may vary. The square footages of the Unit shown herein are based upon the "Architectural Method" of measurement and stated dimensions are measured to the exterior boundaries of the exterior walls and the centerline of interior demising walls and in fact vary from the dimensions that would be determined by using the description and boundaries of the Unit set forth in the Declaration (which only includes the interior airspace between the perimeter walls and excludes interior structural components). Accordingly, the square footages stated herein are greater than those which would be derived by measuring only the interior area space for the Unit as the Unit is described in the Declaration. Note that measurements of rooms set forth on this or plan are generally taken at the greatest points of each given room (as if the room were a perfect rectangle), without regard for any cutouts. Accordingly, the area of the actual room will typically be smaller than the product obtained by multiplying the stated length times width. All depictions of textures, appliances, counters, cabinetry, windows and other matters of detail, are conceptual only and subject to change or modification. Seller does not make, and specially disclaims, any representation or warranty as to the actual size, dimensions or square footage of the Unit. Purchaser should refer to the description and boundaries of the Unit set forth in the recorded Declaration and make its own determination as to the area and dimensions of the Unit. These drawings are conceptual only and are for the convenience of reference.



**NINE**  
AT MARY BRICKELL VILLAGE

**RESIDENCE 07**  
Levels 12 thru 33  
2 Br / 2 Ba

Interior:	1,192 sqft	110 m <sup>2</sup>
Terrace:	79 sqft	7 m <sup>2</sup>
<hr/>		
Total:	1,271 sqft	117 m <sup>2</sup>



There are various methods for calculating the square footage of a condominium unit and depending upon the method of calculation, the quoted square footage of a condominium unit may vary. The square footages of the Unit shown herein are based upon the "Architectural Method" of measurement and stated dimensions are measured to the exterior boundaries of the exterior walls and the centerline of interior demising walls and in fact vary from the dimensions that would be determined by using the description and boundaries of the Unit set forth in the Declaration (which only includes the interior airspace between the perimeter walls and excludes interior structural components). Accordingly, the square footages stated herein are greater than those which would be derived by measuring only the interior area space for the Unit as the Unit is described in the Declaration. Note that measurements of rooms set forth on this or plan are generally taken at the greatest points of each given room (as if the room were a perfect rectangle), without regard for any cutouts. Accordingly, the area of the actual room will typically be smaller than the product obtained by multiplying the stated length times width. All depictions of textures, appliances, counters, cabinetry, windows and other matters of detail, are conceptual only and subject to change or modification. Seller does not make, and specially disclaims, any representation or warranty as to the actual size, dimensions or square footage of the Unit. Purchaser should refer to the description and boundaries of the Unit set forth in the recorded Declaration and make its own determination as to the area and dimensions of the Unit. These drawings are conceptual only and are for the convenience of reference.



Daniel Hornek PA Realtor

[www.MiamiCondosSearch.com](http://www.MiamiCondosSearch.com)

Phone: (305) 808.7918

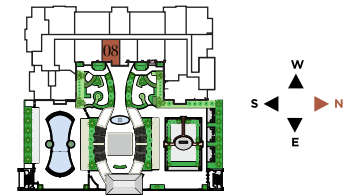
**NINE**  
AT MARY BRICKELL VILLAGE


## RESIDENCE 08

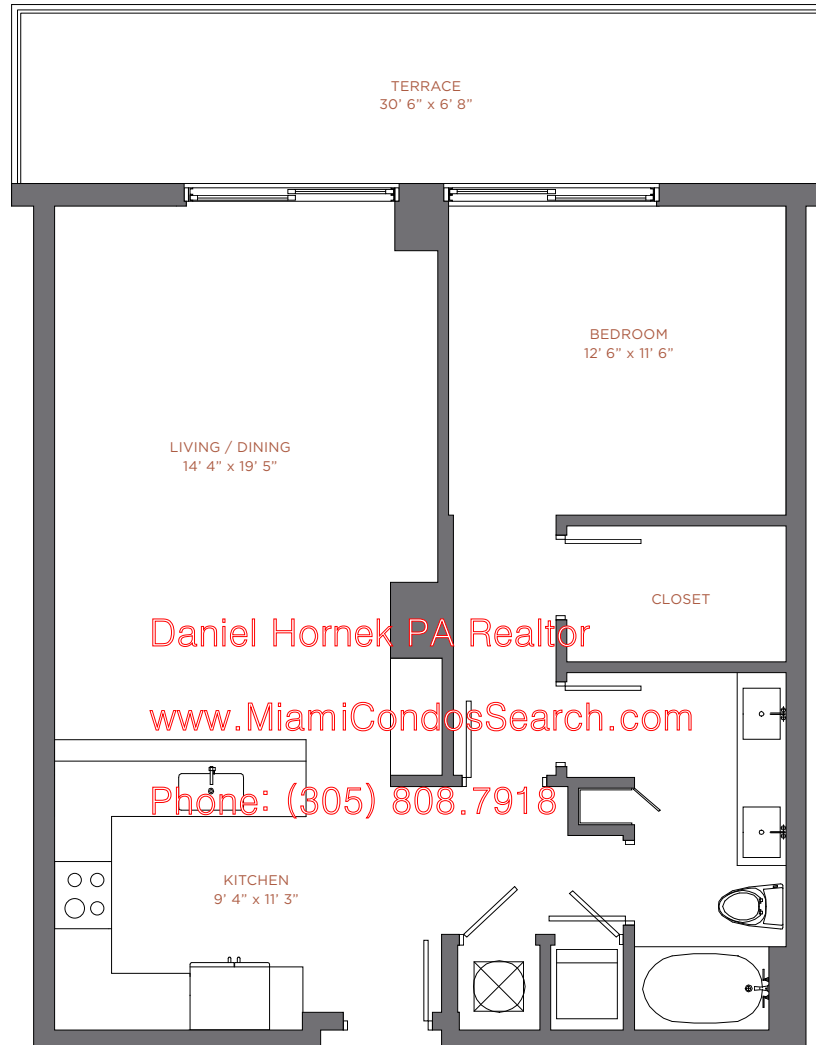
Levels 12 thru 33

1 Br / 1 Ba

Interior:	744 sqft	69 m <sup>2</sup>
Terrace:	83 sqft	8 m <sup>2</sup>
Total:	827 sqft	77 m <sup>2</sup>



 There are various methods for calculating the square footage of a condominium unit and depending upon the method of calculation, the quoted square footage of a condominium unit may vary. The square footages of the Unit shown herein are based upon the "Architectural Method" of measurement and stated dimensions are measured to the exterior boundaries of the exterior walls and the centerline of interior demising walls and in fact vary from the dimensions that would be determined by using the description and boundaries of the Unit set forth in the Declaration (which only includes the interior airspace between the perimeter walls and excludes interior structural components). Accordingly, the square footages stated herein are greater than those which would be derived by measuring only the interior area space for the Unit as the Unit is described in the Declaration. Note that measurements of rooms set forth on this or plan are generally taken at the greatest points of each given room (as if the room were a perfect rectangle), without regard for any cutouts. Accordingly, the area of the actual room will typically be smaller than the product obtained by multiplying the stated length times width. All depictions of textures, appliances, counters, cabinetry, windows and other matters of detail, are conceptual only and subject to change or modification. Seller does not make, and specially disclaims, any representation or warranty as to the actual size, dimensions or square footage of the Unit. Purchaser should refer to the description and boundaries of the Unit set forth in the recorded Declaration and make its own determination as to the area and dimensions of the Unit. These drawings are conceptual only and are for the convenience of reference.



	<b>RESIDENCE 09</b> Levels 12 thru 33 1 Br / 1 Ba	Interior: 886 sqft 83 m <sup>2</sup> Terrace: 203 sqft 19 m <sup>2</sup>	
		Total: 1,089 sqft 102 m <sup>2</sup>	


There are various methods for calculating the square footage of a condominium unit and depending upon the method of calculation, the quoted square footage of a condominium unit may vary. The square footages of the Unit shown herein are based upon the "Architectural Method" of measurement and stated dimensions are measured to the exterior boundaries of the exterior walls and the centerline of interior demising walls and in fact vary from the dimensions that would be determined by using the description and boundaries of the Unit set forth in the Declaration (which only includes the interior airspace between the perimeter walls and excludes interior structural components). Accordingly, the square footages stated herein are greater than those which would be derived by measuring only the interior area space for the Unit as the Unit is described in the Declaration. Note that measurements of rooms set forth on this or plan are generally taken at the greatest points of each given room (as if the room were a perfect rectangle), without regard for any cutouts. Accordingly, the area of the actual room will typically be smaller than the product obtained by multiplying the stated length times width. All depictions of textures, appliances, counters, cabinetry, windows and other matters of detail, are conceptual only and subject to change or modification. Seller does not make, and specially disclaims, any representation or warranty as to the actual size, dimensions or square footage of the Unit. Purchaser should refer to the description and boundaries of the Unit set forth in the recorded Declaration and make its own determination as to the area and dimensions of the Unit. These drawings are conceptual only and are for the convenience of reference.

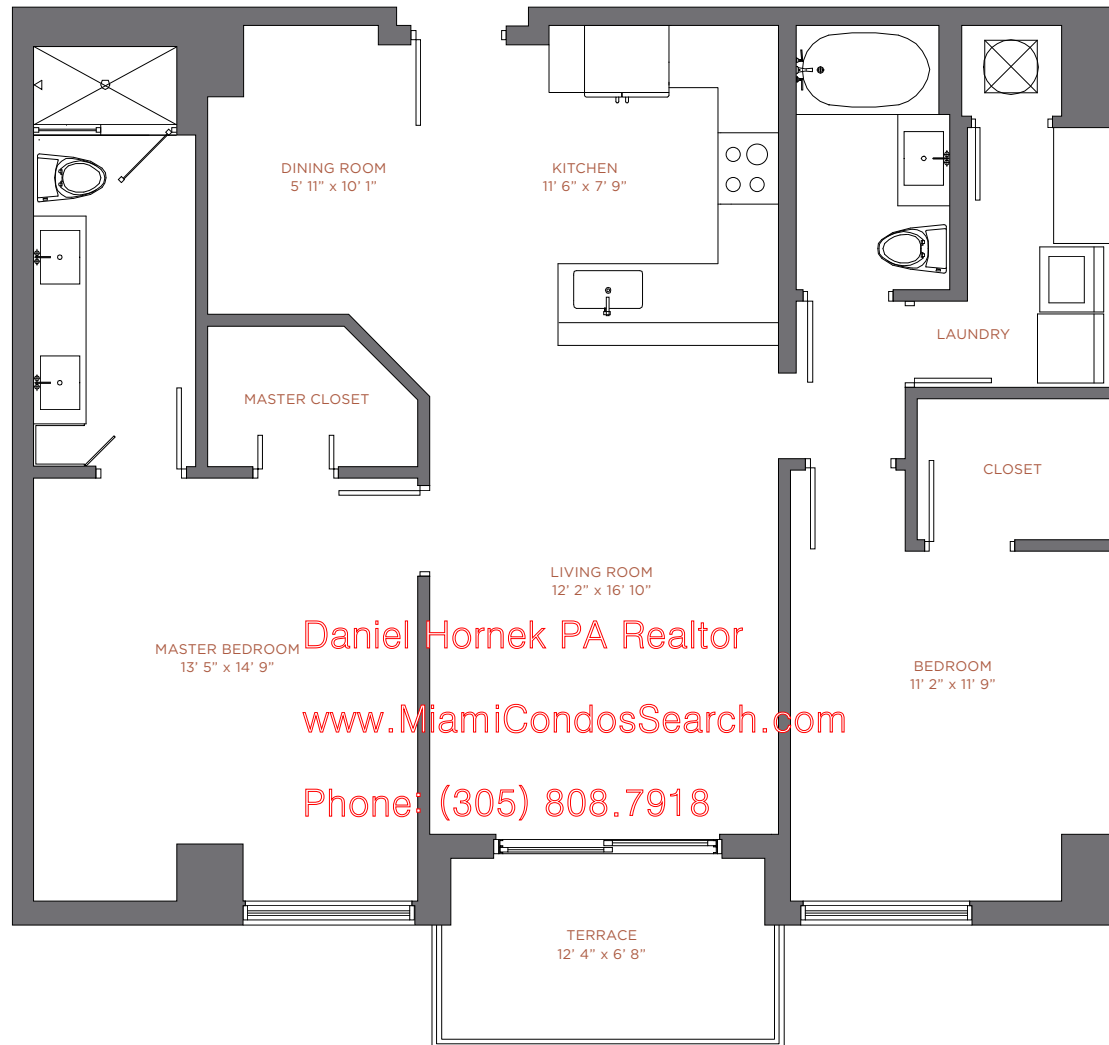


Daniel Hornek PA Realtor

[www.MiamiCondosSearch.com](http://www.MiamiCondosSearch.com)

Phone: (305) 808.7918

 There are various methods for calculating the square footage of a condominium unit and depending upon the method of calculation, the quoted square footage of a condominium unit may vary. The square footages of the Unit shown herein are based upon the "Architectural Method" of measurement and stated dimensions are measured to the exterior boundaries of the exterior walls and the centerline of interior demising walls and in fact vary from the dimensions that would be determined by using the description and boundaries of the Unit set forth in the Declaration (which only includes the interior airspace between the perimeter walls and excludes interior structural components). Accordingly, the square footages stated herein are greater than those which would be derived by measuring only the interior area space for the Unit as the Unit is described in the Declaration. Note that measurements of rooms set forth on this or plan are generally taken at the greatest points of each given room (as if the room were a perfect rectangle), without regard for any cutouts. Accordingly, the area of the actual room will typically be smaller than the product obtained by multiplying the stated length times width. All depictions of textures, appliances, counters, cabinetry, windows and other matters of detail, are conceptual only and subject to change or modification. Seller does not make, and specially disclaims, any representation or warranty as to the actual size, dimensions or square footage of the Unit. Purchaser should refer to the description and boundaries of the Unit set forth in the recorded Declaration and make its own determination as to the area and dimensions of the Unit. These drawings are conceptual only and are for the convenience of reference.



Daniel Hornek PA Realtor

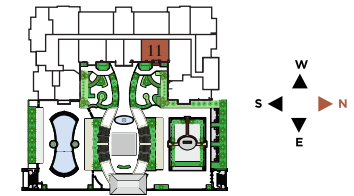
[www.MiamiCondosSearch.com](http://www.MiamiCondosSearch.com)


Phone: (305) 808.7918

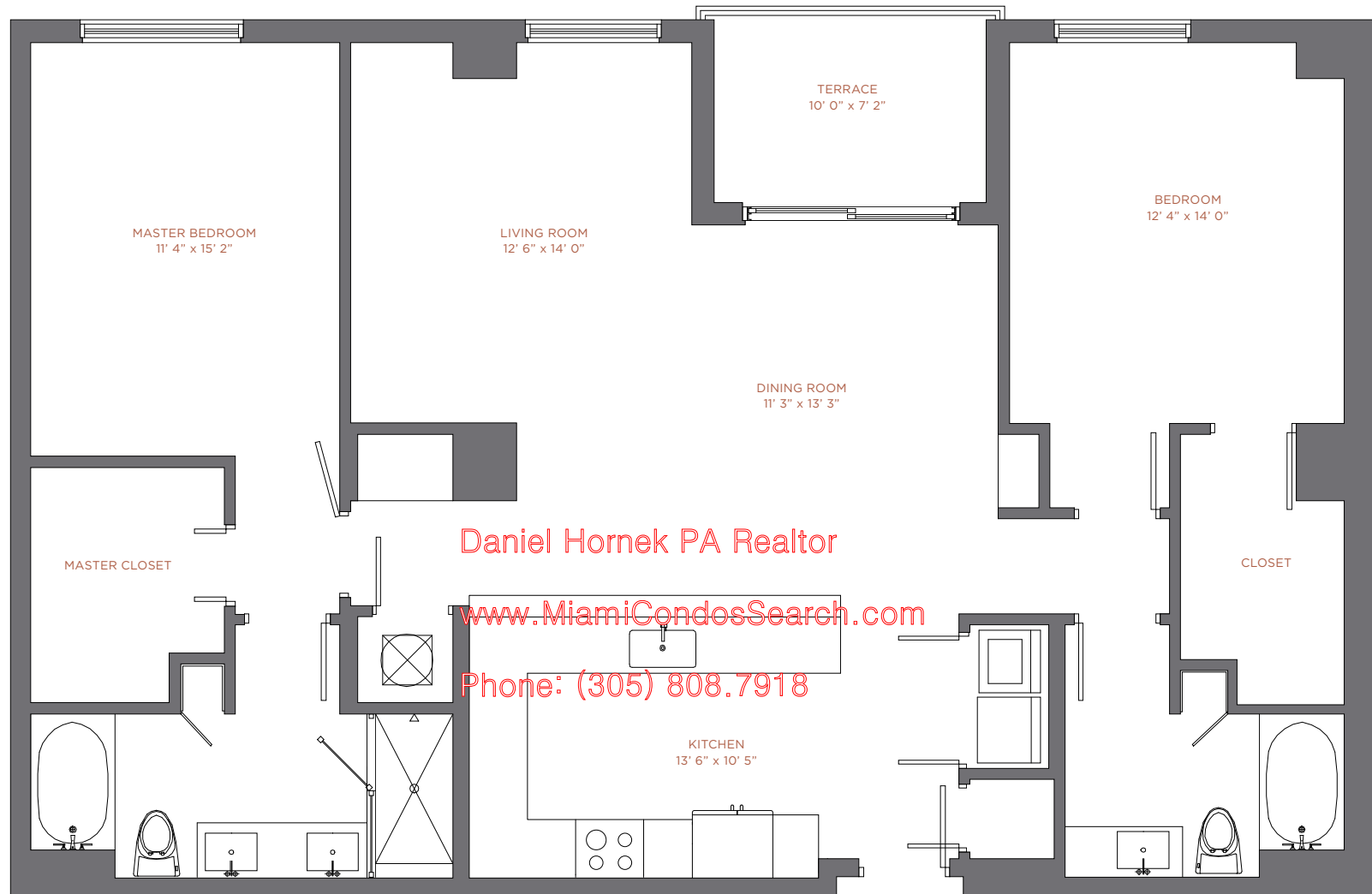
**NINE**  
AT MARY BRICKELL VILLAGE

**RESIDENCE 11**  
Levels 12 thru 33  
2 Br / 2 Ba

Interior:	1,192 sqft	111 m <sup>2</sup>
Terrace:	79 sqft	7 m <sup>2</sup>
Total:	1,271 sqft	118 m <sup>2</sup>



 There are various methods for calculating the square footage of a condominium unit and depending upon the method of calculation, the quoted square footage of a condominium unit may vary. The square footages of the Unit shown herein are based upon the "Architectural Method" of measurement and stated dimensions are measured to the exterior boundaries of the exterior walls and the centerline of interior demising walls and in fact vary from the dimensions that would be determined by using the description and boundaries of the Unit set forth in the Declaration (which only includes the interior airspace between the perimeter walls and excludes interior structural components). Accordingly, the square footages stated herein are greater than those which would be derived by measuring only the interior area space for the Unit as the Unit is described in the Declaration. Note that measurements of rooms set forth on this or plan are generally taken at the greatest points of each given room (as if the room were a perfect rectangle), without regard for any cutouts. Accordingly, the area of the actual room will typically be smaller than the product obtained by multiplying the stated length times width. All depictions of textures, appliances, counters, cabinetry, windows and other matters of detail, are conceptual only and subject to change or modification. Seller does not make, and specially disclaims, any representation or warranty as to the actual size, dimensions or square footage of the Unit. Purchaser should refer to the description and boundaries of the Unit set forth in the recorded Declaration and make its own determination as to the area and dimensions of the Unit. These drawings are conceptual only and are for the convenience of reference.



NINE

AT MARY BRICKELL VILLAGE

RESIDENCE 12

Levels 12 thru 33

2 Br / 2 Ba

Interior:

1,489 sqft

138 m<sup>2</sup>

Terrace:

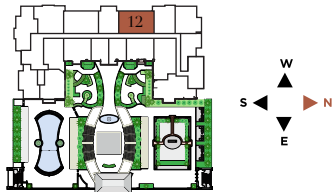
73 sqft


7 m<sup>2</sup>

Total:

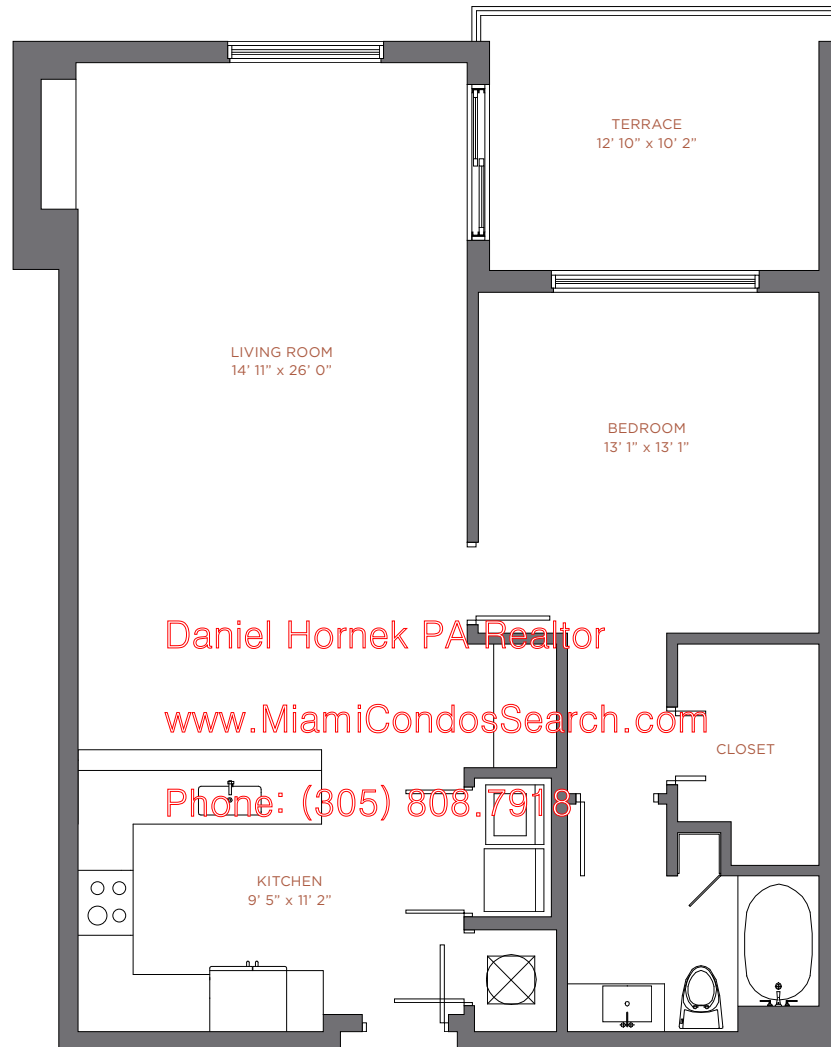
1,562 sqft

145 m<sup>2</sup>



 There are various methods for calculating the square footage of a condominium unit and depending upon the method of calculation, the quoted square footage of a condominium unit may vary. The square footages of the Unit shown herein are based upon the "Architectural Method" of measurement and stated dimensions are measured to the exterior boundaries of the exterior walls and the centerline of interior demising walls and in fact vary from the dimensions that would be determined by using the description and boundaries of the Unit set forth in the Declaration (which only includes the interior airspace between the perimeter walls and excludes interior structural components). Accordingly, the square footages stated herein are greater than those which would be derived by measuring only the interior area space for the Unit as the Unit is described in the Declaration. Note that measurements of rooms set forth on this or plan are generally taken at the greatest points of each given room (as if the room were a perfect rectangle), without regard for any cutouts. Accordingly, the area of the actual room will typically be smaller than the product obtained by multiplying the stated length times width. All depictions of textures, appliances, counters, cabinetry, windows and other matters of detail, are conceptual only and subject to change or modification. Seller does not make, and specially disclaims, any representation or warranty as to the actual size, dimensions or square footage of the Unit. Purchaser should refer to the description and boundaries of the Unit set forth in the recorded Declaration and make its own determination as to the area and dimensions of the Unit. These drawings are conceptual only and are for the convenience of reference.





Daniel Hornek PA Realtor

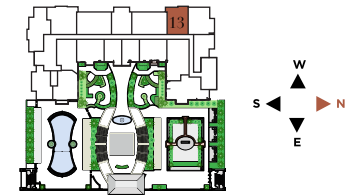
[www.MiamiCondosSearch.com](http://www.MiamiCondosSearch.com)


Phone: (305) 808.7918

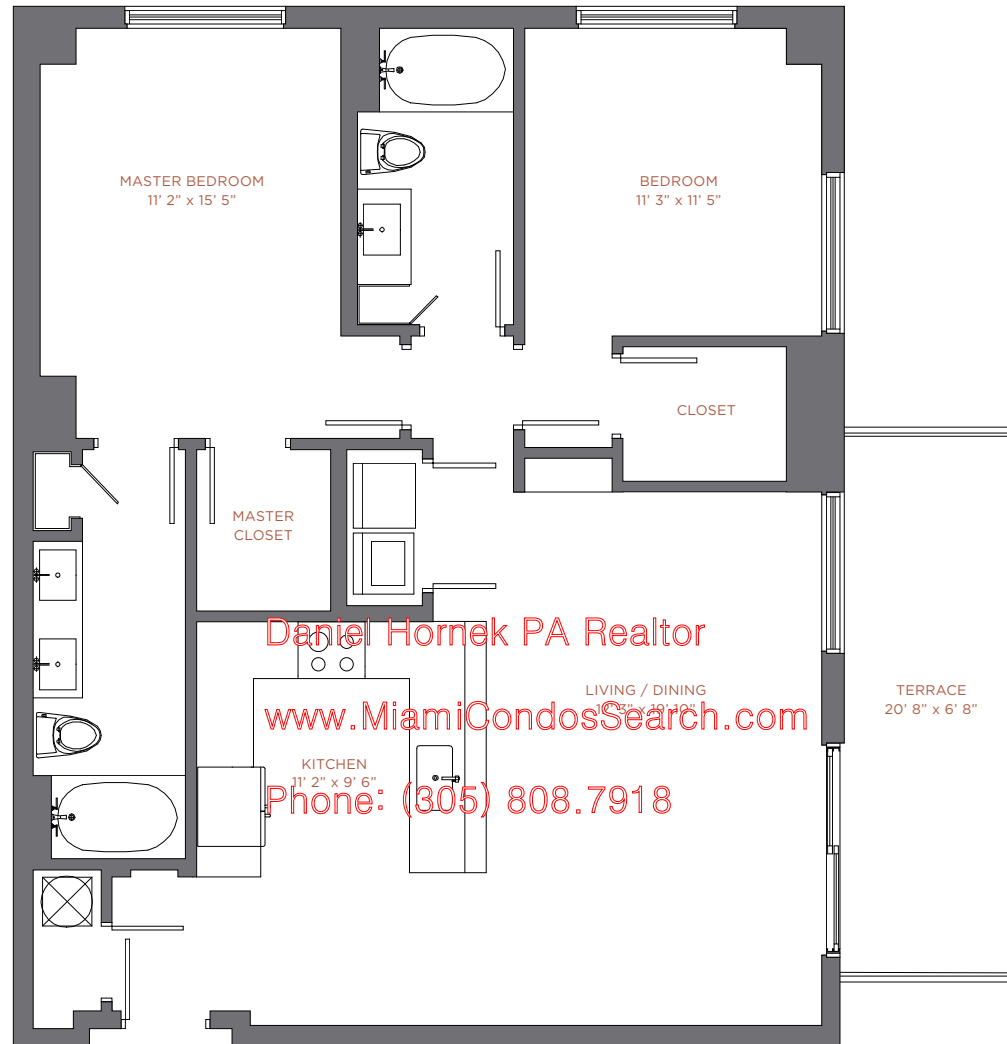
**NINE**  
AT MARY BRICKELL VILLAGE

**RESIDENCE 13**  
Levels 12 thru 33  
1 Br / 1 Ba

Interior:	1,020 sqft	95 m <sup>2</sup>
Terrace:	133 sqft	12 m <sup>2</sup>
<hr/>		
Total:	1,153 sqft	107 m <sup>2</sup>



 There are various methods for calculating the square footage of a condominium unit and depending upon the method of calculation, the quoted square footage of a condominium unit may vary. The square footages of the Unit shown herein are based upon the "Architectural Method" of measurement and stated dimensions are measured to the exterior boundaries of the exterior walls and the centerline of interior demising walls and in fact vary from the dimensions that would be determined by using the description and boundaries of the Unit set forth in the Declaration (which only includes the interior airspace between the perimeter walls and excludes interior structural components). Accordingly, the square footages stated herein are greater than those which would be derived by measuring only the interior area space for the Unit as the Unit is described in the Declaration. Note that measurements of rooms set forth on this or plan are generally taken at the greatest points of each given room (as if the room were a perfect rectangle), without regard for any cutouts. Accordingly, the area of the actual room will typically be smaller than the product obtained by multiplying the stated length times width. All depictions of textures, appliances, counters, cabinetry, windows and other matters of detail, are conceptual only and subject to change or modification. Seller does not make, and specially disclaims, any representation or warranty as to the actual size, dimensions or square footage of the Unit. Purchaser should refer to the description and boundaries of the Unit set forth in the recorded Declaration and make its own determination as to the area and dimensions of the Unit. These drawings are conceptual only and are for the convenience of reference.



Daniel Hornek PA Realtor

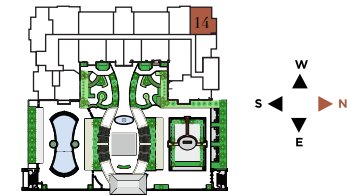
[www.MiamiCondosSearch.com](http://www.MiamiCondosSearch.com)


Phone: (305) 808.7918

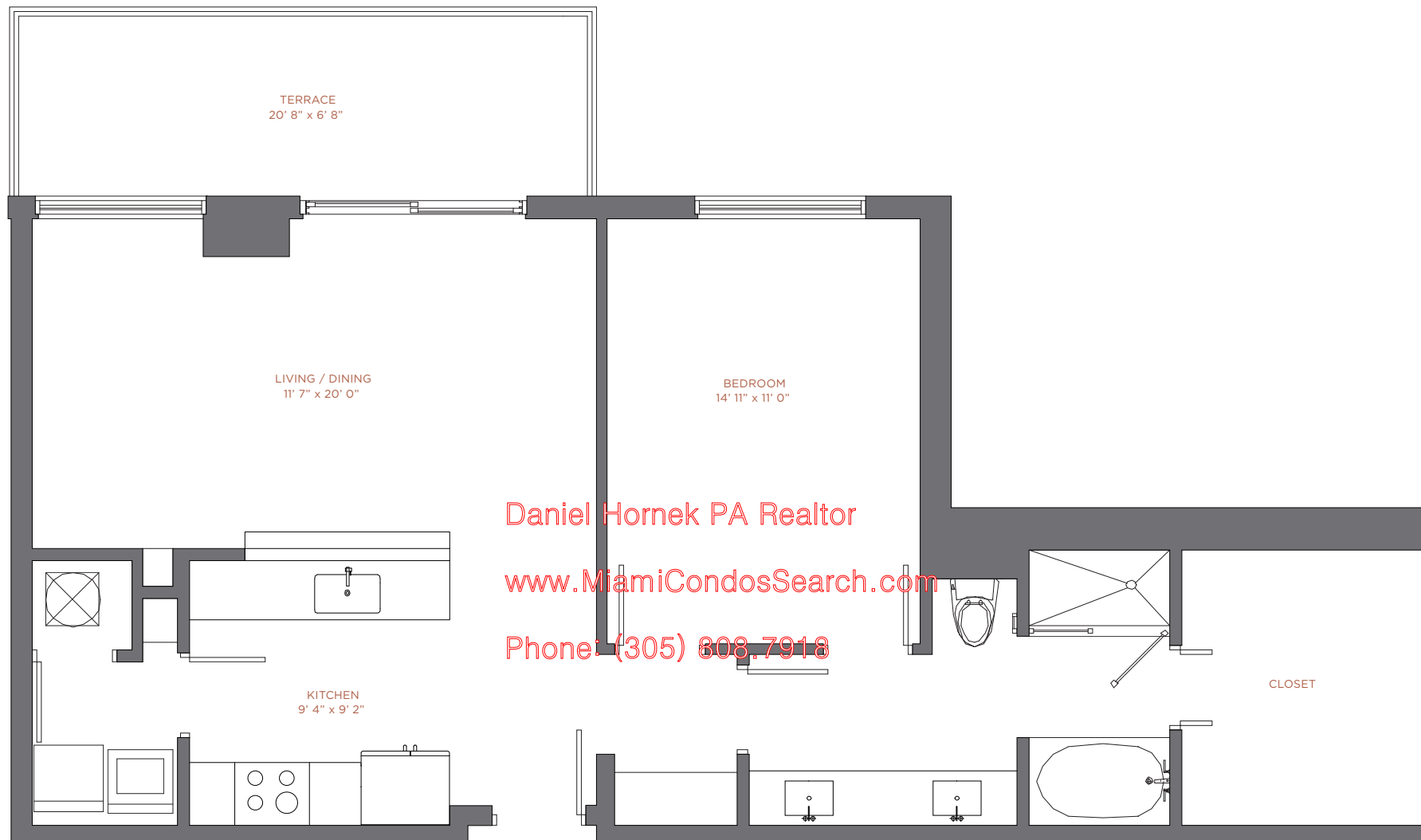
**NINE**  
AT MARY BRICKELL VILLAGE


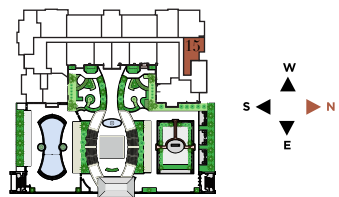
**RESIDENCE 14**  
Levels 12 thru 33  
2 Br / 2 Ba


Interior:	1,173 sqft	109 m <sup>2</sup>
Terrace:	138 sqft	13 m <sup>2</sup>
<hr/>		
Total:	1,311 sqft	122 m <sup>2</sup>

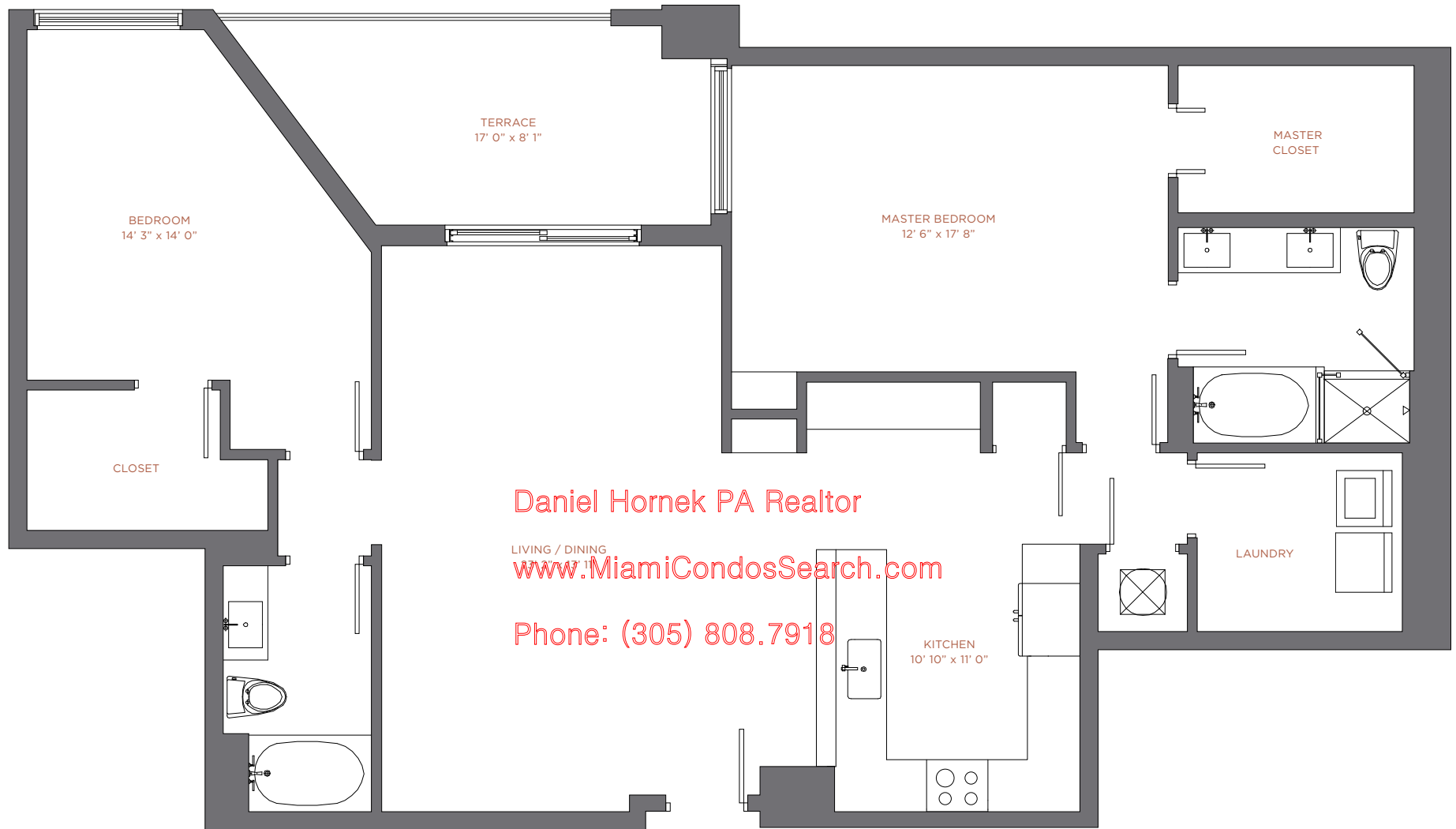


 There are various methods for calculating the square footage of a condominium unit and depending upon the method of calculation, the quoted square footage of a condominium unit may vary. The square footages of the Unit shown herein are based upon the "Architectural Method" of measurement and stated dimensions are measured to the exterior boundaries of the exterior walls and the centerline of interior demising walls and in fact vary from the dimensions that would be determined by using the description and boundaries of the Unit set forth in the Declaration (which only includes the interior airspace between the perimeter walls and excludes interior structural components). Accordingly, the square footages stated herein are greater than those which would be derived by measuring only the interior area space for the Unit as the Unit is described in the Declaration. Note that measurements of rooms set forth on this or plan are generally taken at the greatest points of each given room (as if the room were a perfect rectangle), without regard for any cutouts. Accordingly, the area of the actual room will typically be smaller than the product obtained by multiplying the stated length times width. All depictions of textures, appliances, counters, cabinetry, windows and other matters of detail, are conceptual only and subject to change or modification. Seller does not make, and specially disclaims, any representation or warranty as to the actual size, dimensions or square footage of the Unit. Purchaser should refer to the description and boundaries of the Unit set forth in the recorded Declaration and make its own determination as to the area and dimensions of the Unit. These drawings are conceptual only and are for the convenience of reference.



	<b>RESIDENCE 15</b>		
	Levels 12 thru 33		
	1 Br / 1 Ba		
	Interior:	914 sqft	85 m <sup>2</sup>
	Terrace:	138 sqft	13 m <sup>2</sup>
	Total:	1,052 sqft	98 m <sup>2</sup>

 There are various methods for calculating the square footage of a condominium unit and depending upon the method of calculation, the quoted square footage of a condominium unit may vary. The square footages of the Unit shown herein are based upon the "Architectural Method" of measurement and stated dimensions are measured to the exterior boundaries of the exterior walls and the centerline of interior demising walls and in fact vary from the dimensions that would be determined by using the description and boundaries of the Unit set forth in the Declaration (which only includes the interior airspace between the perimeter walls and excludes interior structural components). Accordingly, the square footages stated herein are greater than those which would be derived by measuring only the interior area space for the Unit as the Unit is described in the Declaration. Note that measurements of rooms set forth on this or plan are generally taken at the greatest points of each given room (as if the room were a perfect rectangle), without regard for any cutouts. Accordingly, the area of the actual room will typically be smaller than the product obtained by multiplying the stated length times width. All depictions of textures, appliances, counters, cabinetry, windows and other matters of detail, are conceptual only and subject to change or modification. Seller does not make, and specially disclaims, any representation or warranty as to the actual size, dimensions or square footage of the Unit. Purchaser should refer to the description and boundaries of the Unit set forth in the recorded Declaration and make its own determination as to the area and dimensions of the Unit. These drawings are conceptual only and are for the convenience of reference.



Daniel Hornek PA Realtor

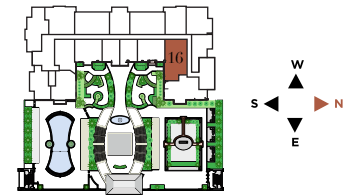
[www.MiamiCondosSearch.com](http://www.MiamiCondosSearch.com)

Phone: (305) 808.7918

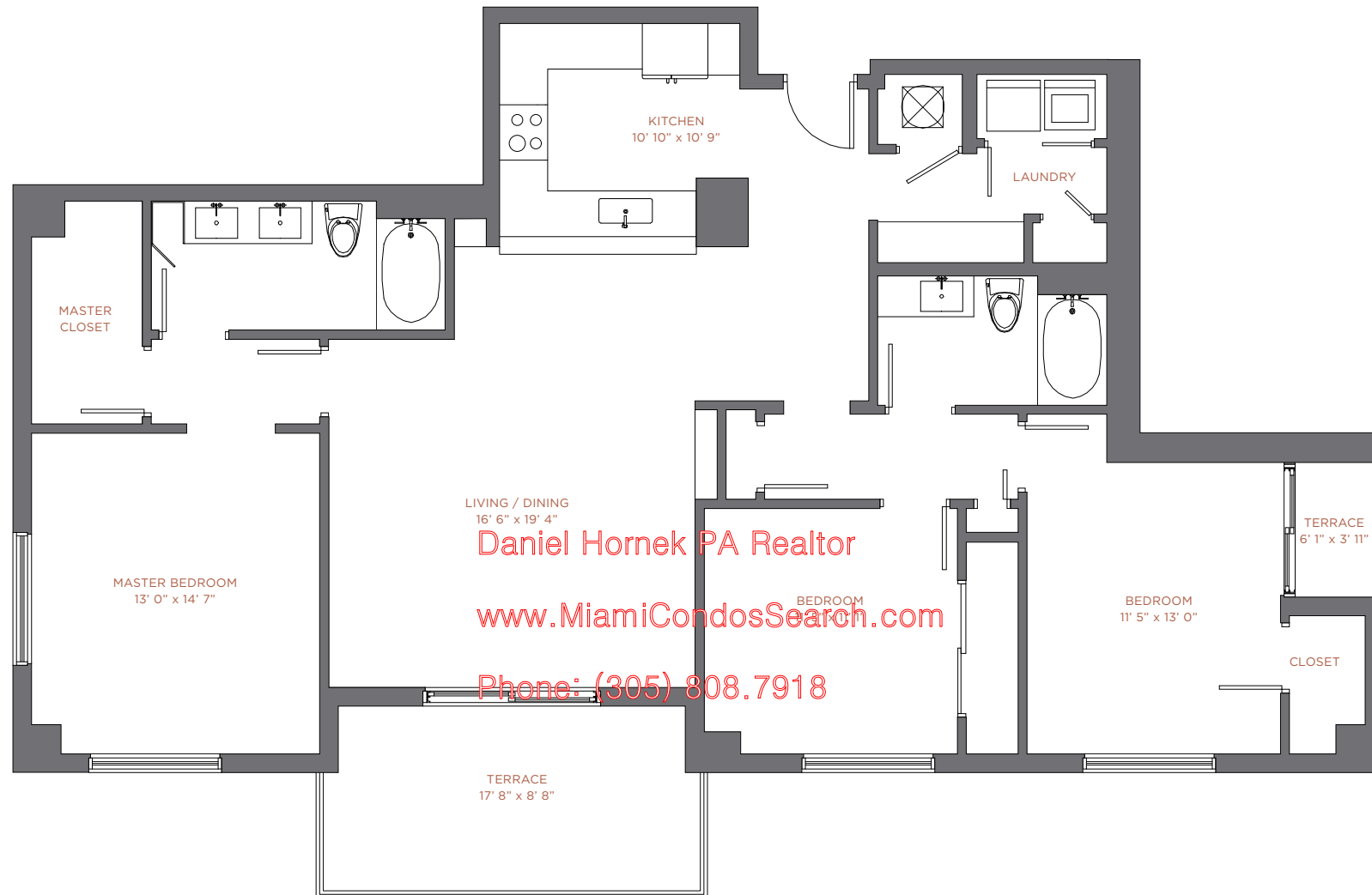
**NINE**  
AT MARY BRICKELL VILLAGE

**RESIDENCE 16**  
Levels 12 thru 33  
2 Br / 2 Ba

Interior:	1,501 sqft	139 m <sup>2</sup>
Terrace:	143 sqft	13 m <sup>2</sup>
<b>Total:</b>	<b>1,644 sqft</b>	<b>152 m<sup>2</sup></b>



There are various methods for calculating the square footage of a condominium unit and depending upon the method of calculation, the quoted square footage of a condominium unit may vary. The square footages of the Unit shown herein are based upon the "Architectural Method" of measurement and stated dimensions are measured to the exterior boundaries of the exterior walls and the centerline of interior demising walls and in fact vary from the dimensions that would be determined by using the description and boundaries of the Unit set forth in the Declaration (which only includes the interior airspace between the perimeter walls and excludes interior structural components). Accordingly, the square footages stated herein are greater than those which would be derived by measuring only the interior area space for the Unit as the Unit is described in the Declaration. Note that measurements of rooms set forth on this or plan are generally taken at the greatest points of each given room (as if the room were a perfect rectangle), without regard for any cutouts. Accordingly, the area of the actual room will typically be smaller than the product obtained by multiplying the stated length times width. All depictions of textures, appliances, counters, cabinetry, windows and other matters of detail, are conceptual only and subject to change or modification. Seller does not make, and specially disclaims, any representation or warranty as to the actual size, dimensions or square footage of the Unit. Purchaser should refer to the description and boundaries of the Unit set forth in the recorded Declaration and make its own determination as to the area and dimensions of the Unit. These drawings are conceptual only and are for the convenience of reference.



Daniel Hornek PA Realtor

[www.MiamiCondosSearch.com](http://www.MiamiCondosSearch.com)

Phone: (305) 808.7918

**NINE**

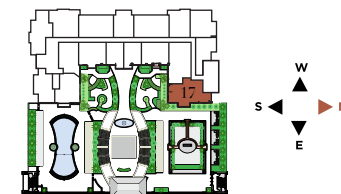
AT MARY BRICKELL VILLAGE

## RESIDENCE 17

Levels 12 thru 33

3 Br / 2 Ba

Interior:	1,596 sqft	148 m <sup>2</sup>
Terrace:	169 sqft	16 m <sup>2</sup>
<hr/>		
Total:	1,765 sqft	164 m <sup>2</sup>



There are various methods for calculating the square footage of a condominium unit and depending upon the method of calculation, the quoted square footage of a condominium unit may vary. The square footages of the Unit shown herein are based upon the "Architectural Method" of measurement and stated dimensions are measured to the exterior boundaries of the exterior walls and the centerline of interior demising walls and in fact vary from the dimensions that would be determined by using the description and boundaries of the Unit set forth in the Declaration (which only includes the interior airspace between the perimeter walls and excludes interior structural components). Accordingly, the square footages stated herein are greater than those which would be derived by measuring only the interior area space for the Unit as the Unit is described in the Declaration. Note that measurements of rooms set forth on this or plan are generally taken at the greatest points of each given room (as if the room were a perfect rectangle), without regard for any cutouts. Accordingly, the area of the actual room will typically be smaller than the product obtained by multiplying the stated length times width. All depictions of textures, appliances, counters, cabinetry, windows and other matters of detail, are conceptual only and subject to change or modification. Seller does not make, and specially disclaims, any representation or warranty as to the actual size, dimensions or square footage of the Unit. Purchaser should refer to the description and boundaries of the Unit set forth in the recorded Declaration and make its own determination as to the area and dimensions of the Unit. These drawings are conceptual only and are for the convenience of reference.