

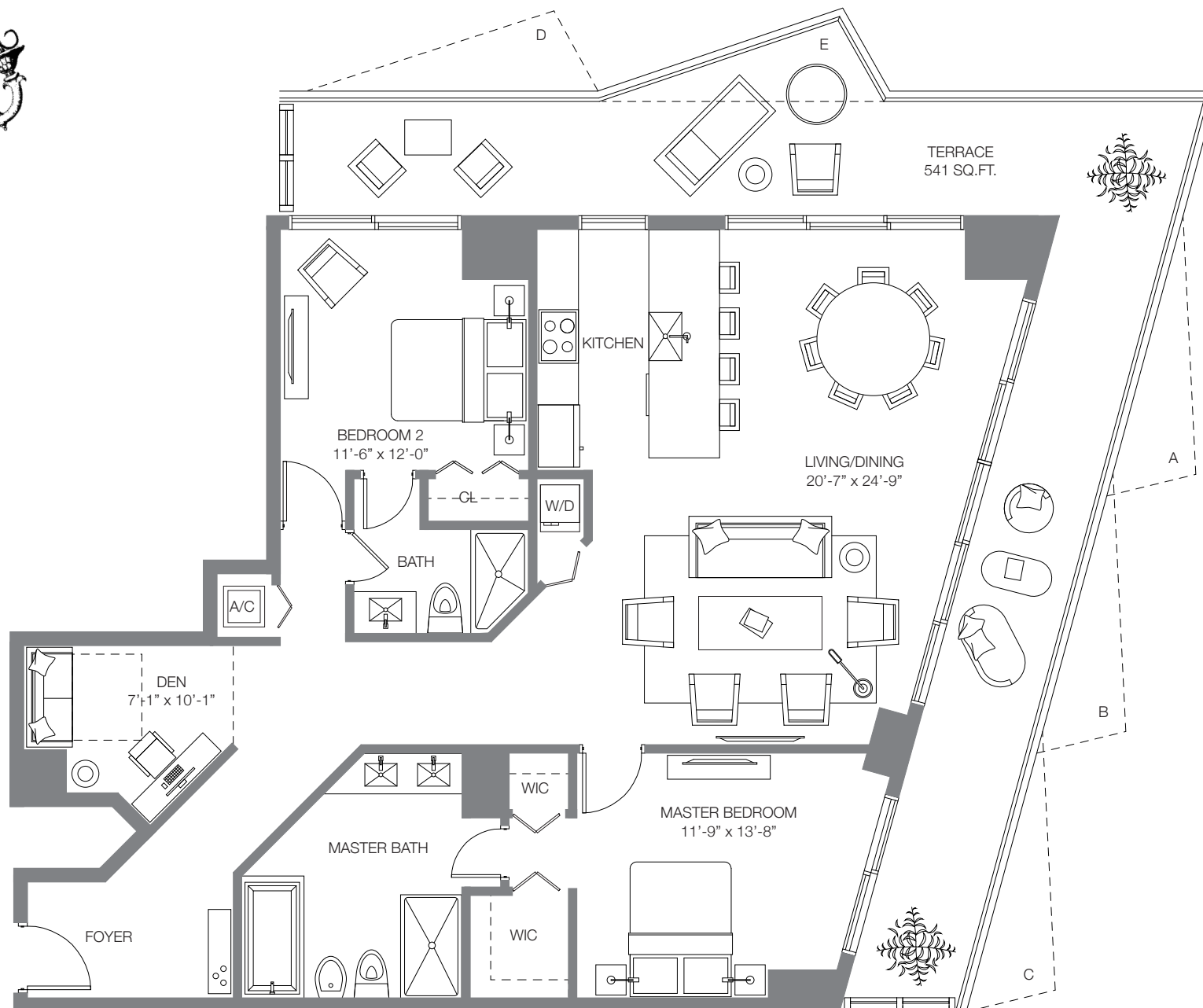


Daniel Hornek PA Realtor  
(305) 808-7918  
[www.MiamiCondosSearch.com](http://www.MiamiCondosSearch.com)

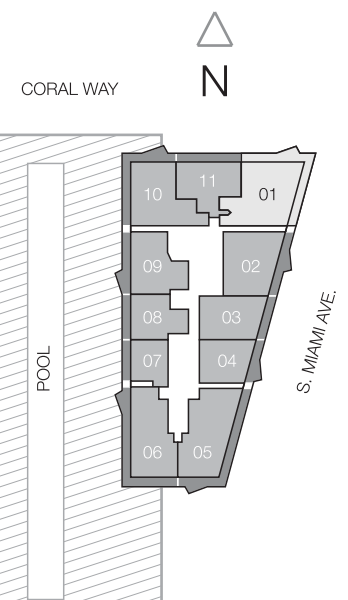
*residences*  
FLOOR PLANS



Daniel Hornek PA Realtor  
(305) 808-7918  
[www.MiamiCondosSearch.com](http://www.MiamiCondosSearch.com)



TERRACE EXTENSION 27 SQ. FT.  
A. FLOORS 15, 20, 25, 30, 35, 40, 45, 50  
B. FLOORS 14, 19, 24, 29, 34, 39, 44, 49  
C. FLOORS 12, 18, 23, 28, 33, 38, 43, 48  
D. FLOORS 11, 17, 22, 27, 32, 37, 42, 47  
E. FLOORS 10, 16, 21, 26, 31, 36, 41, 46



## SLS RESIDENCE 01

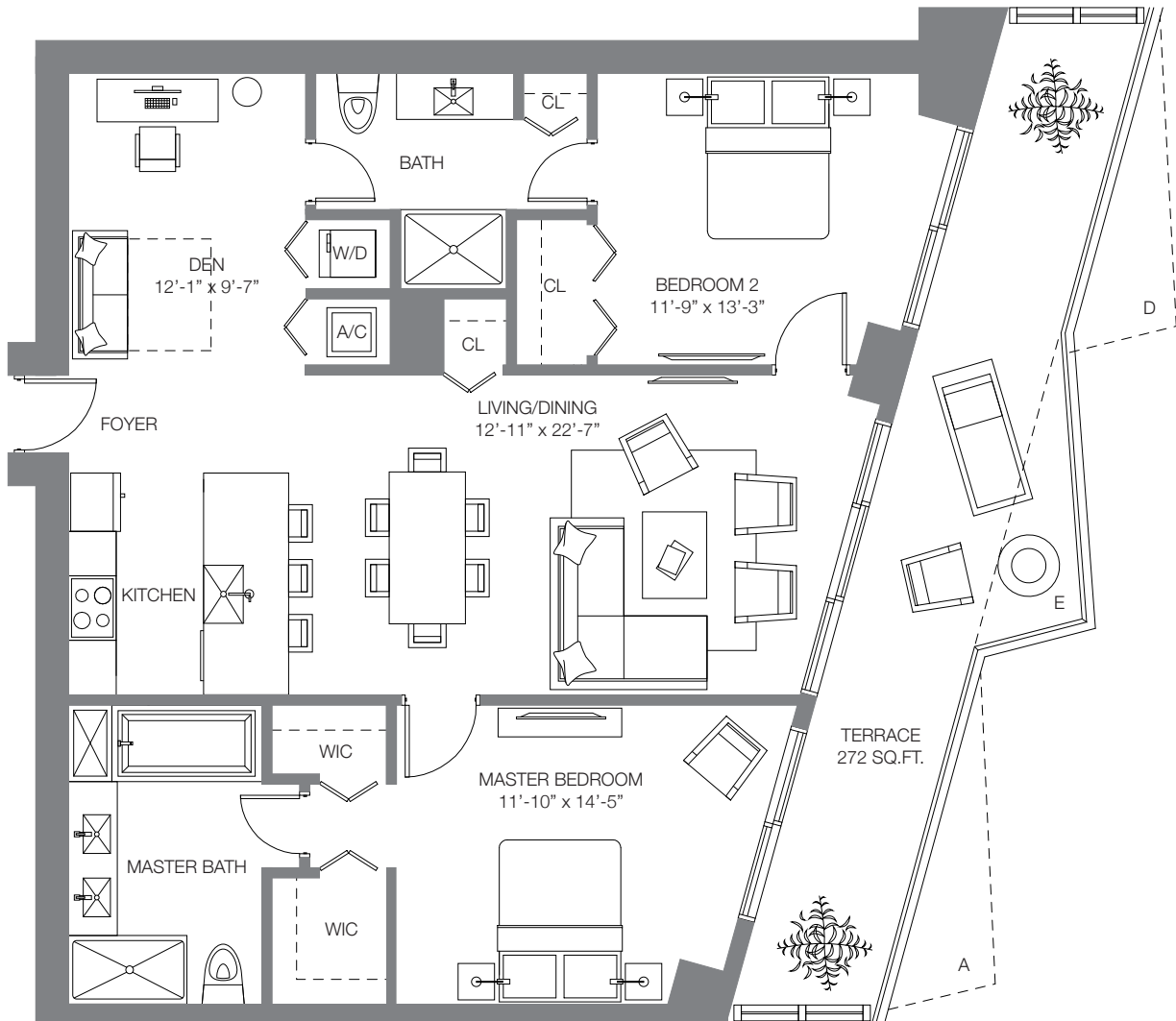
2 BEDROOMS & DEN / 2 BATHS

A/C INTERIOR AREA	1,495 SQ. FT.	138.89 SQ. M.
TERRACE W/EXTENSION AREA	541 SQ. FT.	50.26 SQ. M.
<b>TOTAL RESIDENCE</b>	<b>2,036 SQ. FT.</b>	<b>189.15 SQ. M.</b>

Stated dimensions are measured to the exterior boundaries of the exterior walls and the centerline of interior demising walls and in fact vary from the dimensions that would be determined by using the description and definition of the "Unit" set forth in the Declaration (which generally only includes the interior airspace between the perimeter walls and excludes interior structural components). For your reference, the area of the Unit, determined in accordance with those defined unit boundaries, is + or - 1,305 sq. ft. for units 01. Note that measurements of rooms set forth on this floor plan are generally taken at the greatest points of each given room (as if the room were a perfect rectangle), without regard for any cutouts. Accordingly, the area of the actual room will typically be smaller than the product obtained by multiplying the stated length times width. All dimensions are approximate and may vary with actual construction, and all floor plans and development plans are subject to change.

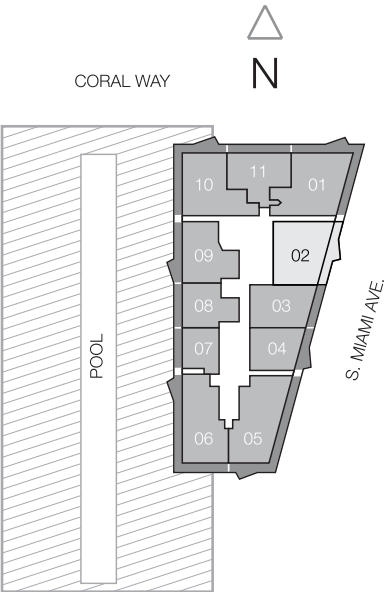


Daniel Hornek PA Realtor  
(305) 808-7918  
www.MiamiCondosSearch.com



TERRACE EXTENSION 27 SQ. FT.  
A. FLOORS 15, 20, 25, 30, 35, 40, 45, 50  
D. FLOORS 11, 17, 22, 27, 32, 37, 42, 47  
E. FLOORS 10, 16, 21, 26, 31, 36, 41, 46

Floors not listed above do not have an extended terrace.  
Terrace without extension is 245 SQ. FT.



# SLS RESIDENCE 02

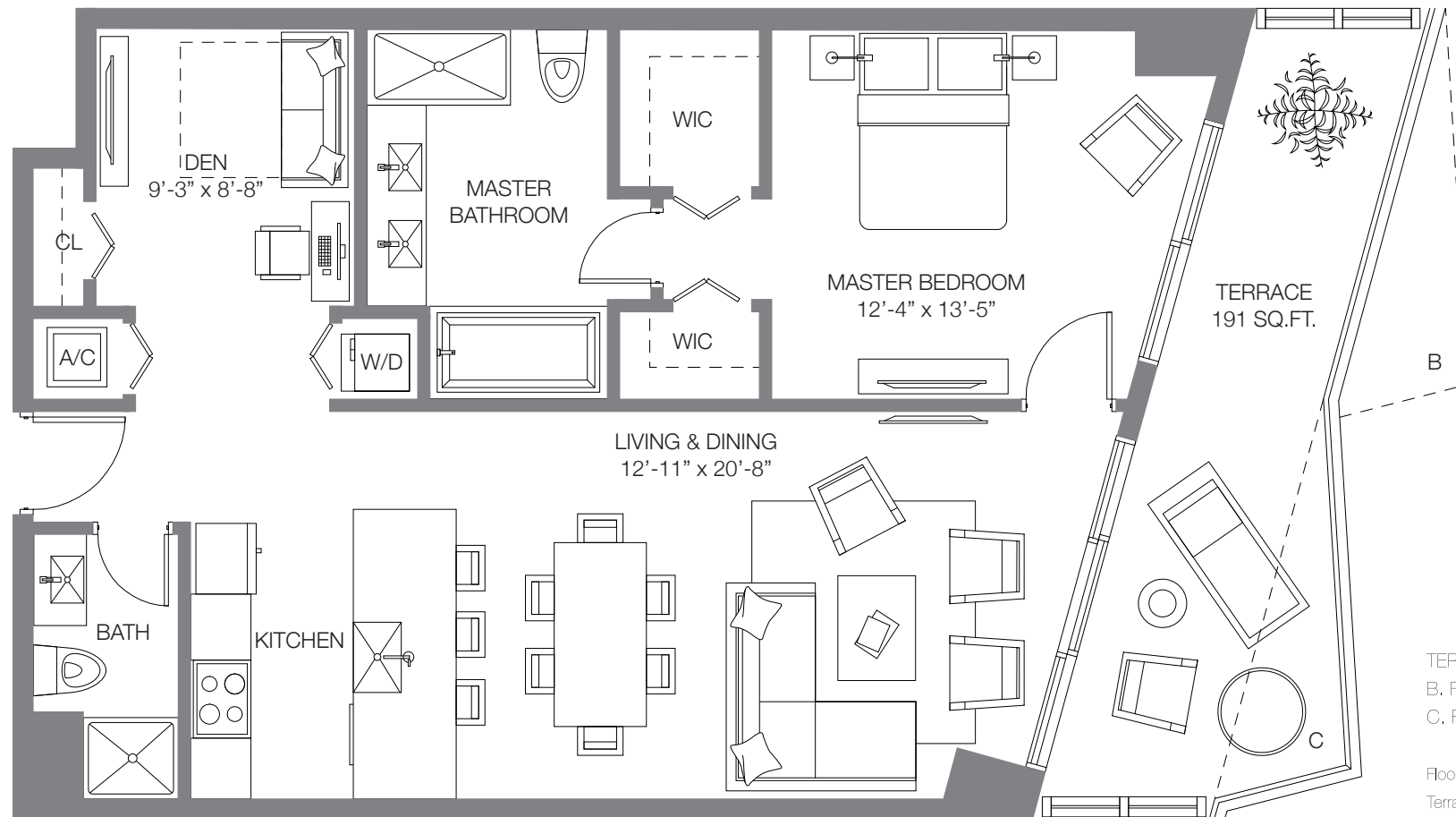
2 BEDROOMS & DEN / 2 BATHS

A/C INTERIOR AREA	1,332 SQ. FT.	123.75 SQ. M.
TERRACE W/EXTENSION AREA	272 SQ. FT.	25.27 SQ. M.
TOTAL RESIDENCE	1,604 SQ. FT.	149.02 SQ. M.

Stated dimensions are measured to the exterior boundaries of the exterior walls and the centerline of interior demising walls and in fact vary from the dimensions that would be determined by using the description and definition of the "Unit" set forth in the Declaration (which generally only includes the interior airspace between the perimeter walls and excludes interior structural components). For your reference, the area of the Unit, determined in accordance with those defined unit boundaries, is + or - 1,139 sq. ft. for units 02. Note that measurements of rooms set forth on this floor plan are generally taken at the greatest points of each given room (as if the room were a perfect rectangle), without regard for any cutouts. Accordingly, the area of the actual room will typically be smaller than the product obtained by multiplying the stated length times width. All dimensions are approximate and may vary with actual construction, and all floor plans and development plans are subject to change.



Daniel Hornek PA Realtor  
(305) 808-7918  
[www.MiamiCondosSearch.com](http://www.MiamiCondosSearch.com)



TERRACE EXTENSION 27 SQ. FT.  
B. FLOORS 14, 19, 24, 29, 34, 39, 44, 49  
C. FLOORS 12, 18, 23, 28, 33, 38, 43, 48

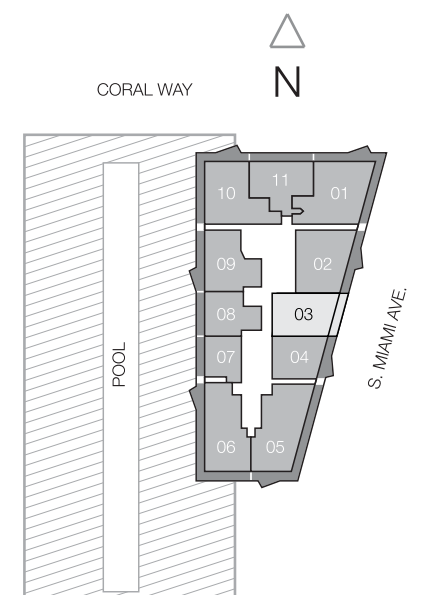
Floors not listed above do not have an extended terrace.  
Terrace without extension is 164 SQ. FT.

## SLS RESIDENCE 03

1 BEDROOM & DEN / 2 BATHS

A/C INTERIOR AREA	995 SQ. FT.	92.43 SQ. M.
TERRACE W/EXTENSION AREA	191 SQ. FT.	17.74 SQ. M.
<b>TOTAL RESIDENCE</b>	<b>1,186 SQ. FT.</b>	<b>110.17 SQ. M.</b>

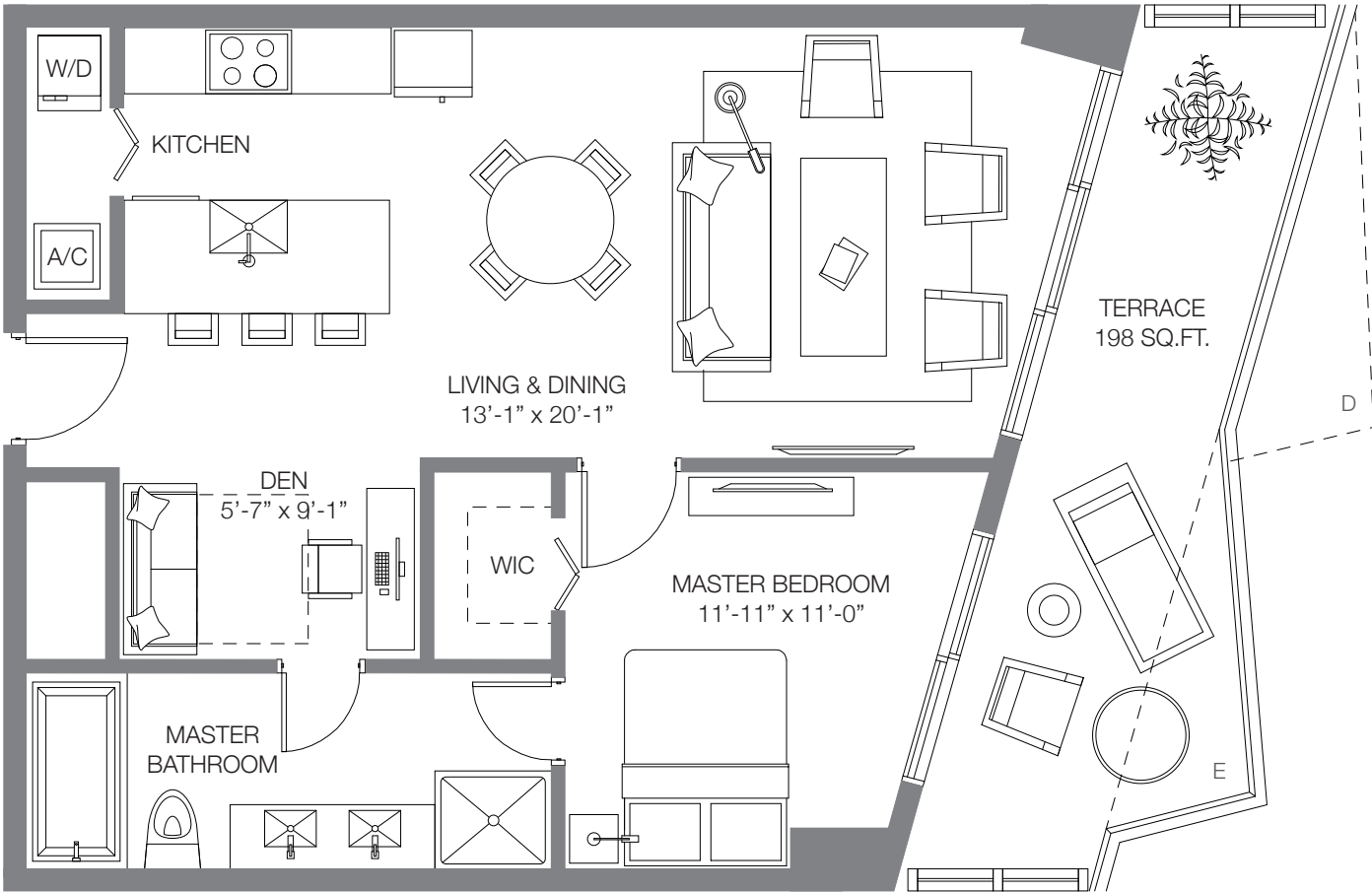
Stated dimensions are measured to the exterior boundaries of the exterior walls and the centerline of interior demising walls and in fact vary from the dimensions that would be determined by using the description and definition of the "Unit" set forth in the Declaration (which generally only includes the interior airspace between the perimeter walls and excludes interior structural components). For your reference, the area of the Unit, determined in accordance with those defined unit boundaries, is + or - 897 sq. ft. for units 03. Note that measurements of rooms set forth on this floor plan are generally taken at the greatest points of each given room (as if the room were a perfect rectangle), without regard for any cutouts. Accordingly, the area of the actual room will typically be smaller than the product obtained by multiplying the stated length times width. All dimensions are approximate and may vary with actual construction, and all floor plans and development plans are subject to change.







Daniel Hornek PA Realtor  
(305) 808-7918  
www.MiamiCondosSearch.com



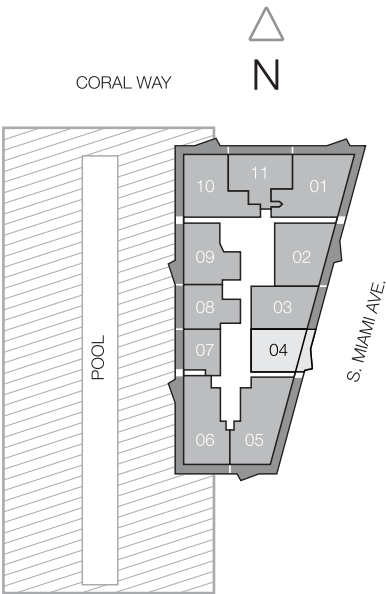
TERRACE EXTENSION 27 SQ. FT.  
D. FLOORS 11, 17, 22, 27, 32, 37, 42, 47  
E. FLOORS 10, 16, 21, 26, 31, 36, 41, 46  
  
Floors not listed above do not have an extended terrace.  
Terrace without extension is 171 SQ. FT.

## SLS RESIDENCE 04

1 BEDROOM & DEN / 1 BATH

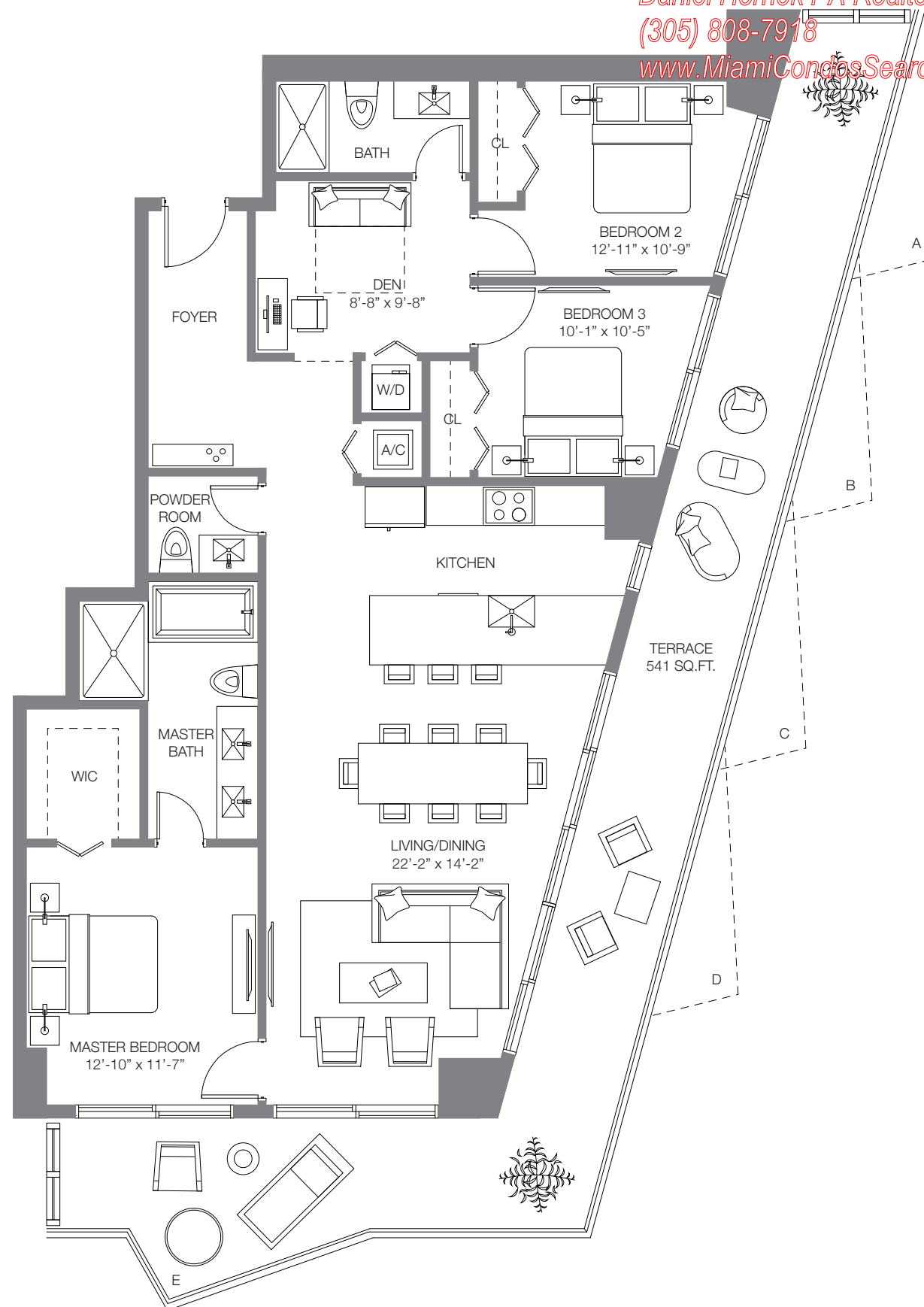
A/C INTERIOR AREA	810 SQ. FT.	75.25 SQ. M.
TERRACE W/EXTENSION AREA	198 SQ. FT.	18.39 SQ. M.
TOTAL RESIDENCE	1008 SQ. FT.	93.64 SQ. M.

Stated dimensions are measured to the exterior boundaries of the exterior walls and the centerline of interior demising walls and in fact vary from the dimensions that would be determined by using the description and definition of the "Unit" set forth in the Declaration (which generally only includes the interior airspace between the perimeter walls and excludes interior structural components). For your reference, the area of the Unit, determined in accordance with those defined unit boundaries, is + or - 713 sq. ft. for units 04. Note that measurements of rooms set forth on this floor plan are generally taken at the greatest points of each given room (as if the room were a perfect rectangle), without regard for any cutouts. Accordingly, the area of the actual room will typically be smaller than the product obtained by multiplying the stated length times width. All dimensions are approximate and may vary with actual construction, and all floor plans and development plans are subject to change.

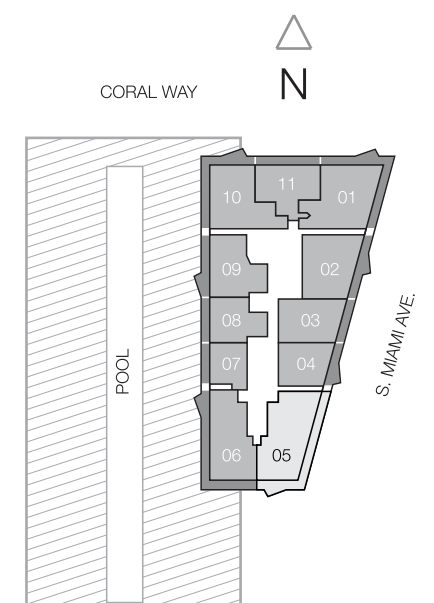




Daniel Hornek PA Realtor  
(305) 808-7918  
www.MiamiCondosSearch.com



TERRACE EXTENSION 27 SQ. FT.  
A. FLOORS 15, 20, 25, 30, 35, 40, 45, 50  
B. FLOORS 14, 19, 24, 29, 34, 39, 44, 49  
C. FLOORS 12, 18, 23, 28, 33, 38, 43, 48  
D. FLOORS 11, 17, 22, 27, 32, 37, 42, 47  
E. FLOORS 10, 16, 21, 26, 31, 36, 41, 46



## SLS RESIDENCE 05

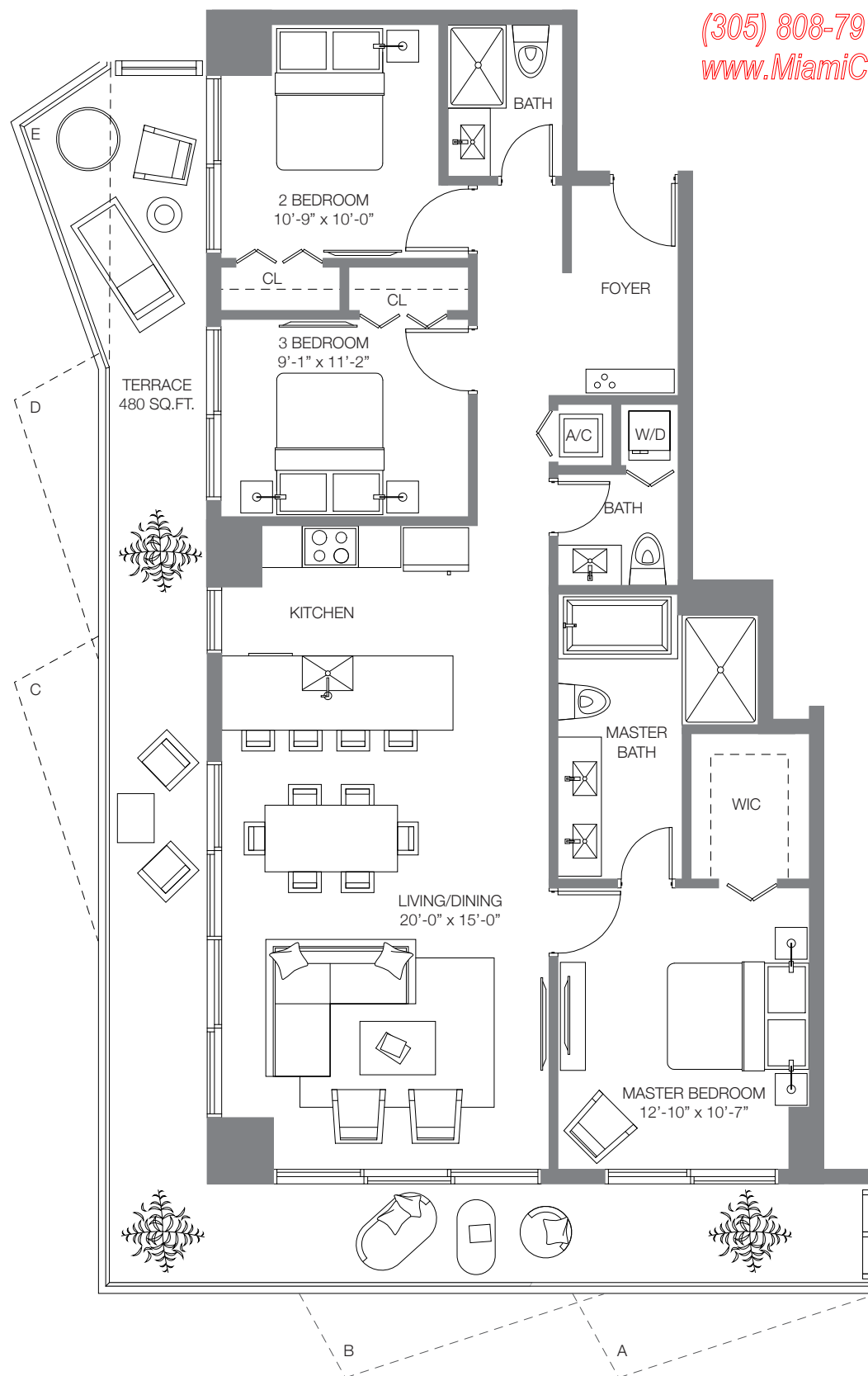
3 BEDROOMS & DEN / 2 ½ BATHS

A/C INTERIOR AREA	1,505 SQ. FT.	139.82 SQ. M.
TERRACE W/EXTENSION AREA	541 SQ. FT.	50.26 SQ. M.
<b>TOTAL RESIDENCE</b>	<b>2,046 SQ. FT.</b>	<b>190.08 SQ. M.</b>

Stated dimensions are measured to the exterior boundaries of the exterior walls and the centerline of interior demising walls and in fact vary from the dimensions that would be determined by using the description and definition of the "Unit" set forth in the Declaration (which generally only includes the interior airspace between the perimeter walls and excludes interior structural components). For your reference, the area of the Unit, determined in accordance with those defined unit boundaries, is + or - 1,298 sq. ft. for units 05. Note that measurements of rooms set forth on this floor plan are generally taken at the greatest points of each given room (as if the room were a perfect rectangle), without regard for any cutouts. Accordingly, the area of the actual room will typically be smaller than the product obtained by multiplying the stated length times width. All dimensions are approximate and may vary with actual construction, and all floor plans and development plans are subject to change.



Daniel Hornek PA Realtor  
(305) 808-7918  
[www.MiamiCondosSearch.com](http://www.MiamiCondosSearch.com)



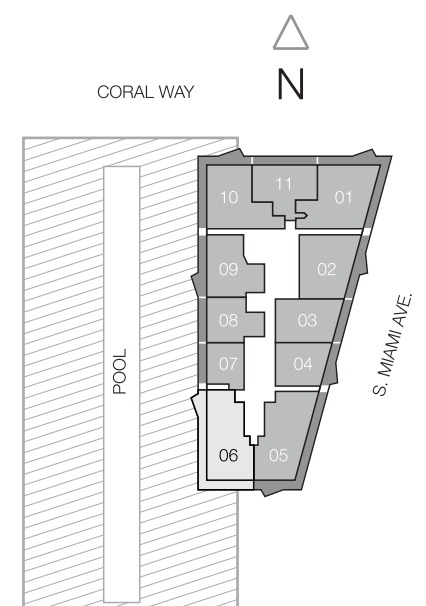
TERRACE EXTENSION 27 SQ. FT.  
A. FLOORS 15, 20, 25, 30, 35, 40, 45, 50  
B. FLOORS 14, 19, 24, 29, 34, 39, 44, 49  
C. FLOORS 12, 18, 23, 28, 33, 38, 43, 48  
D. FLOORS 11, 17, 22, 27, 32, 37, 42, 47  
E. FLOORS 10, 16, 21, 26, 31, 36, 41, 46

## SLS RESIDENCE 06

3 BEDROOMS / 2 ½ BATHS

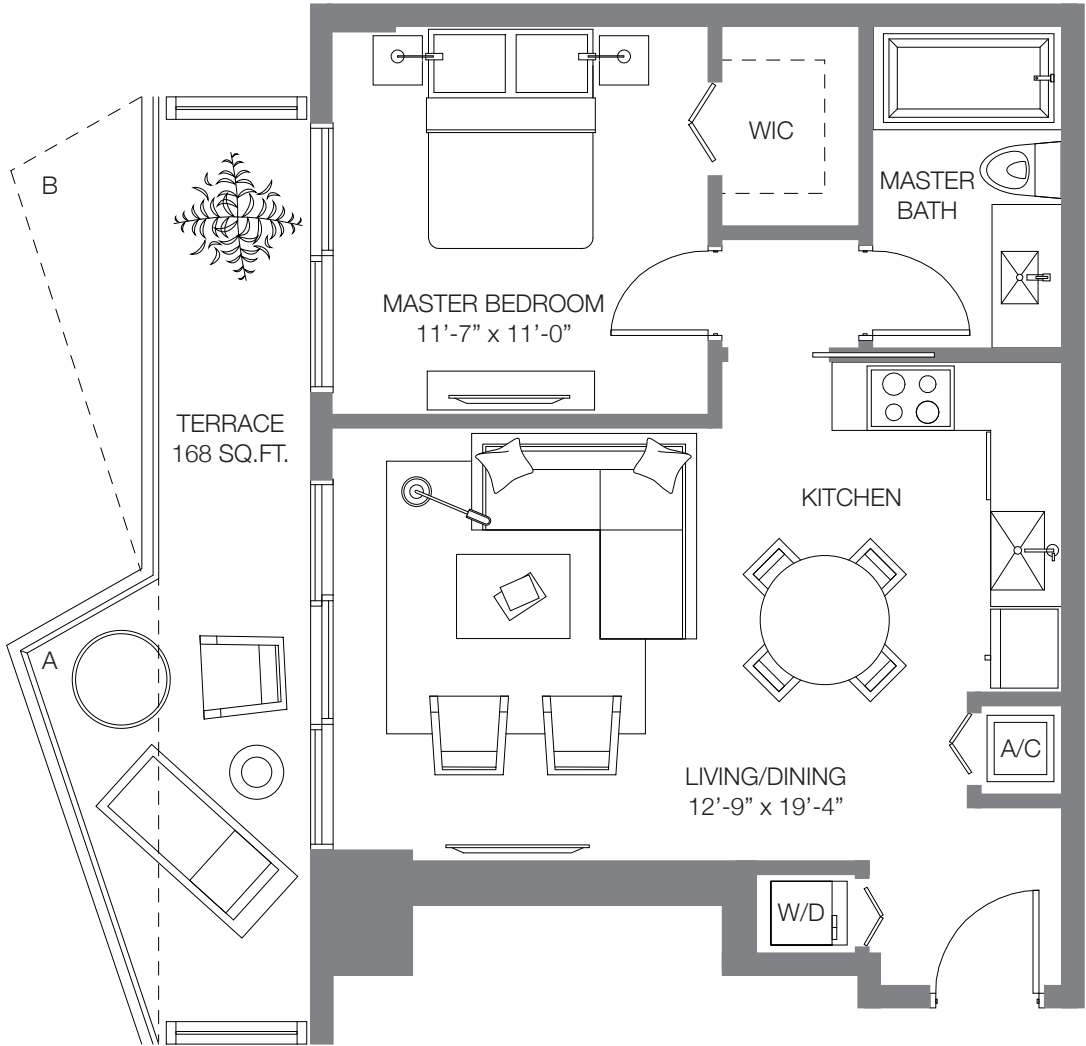
A/C INTERIOR AREA	1,346 SQ. FT.	125.05 SQ. M.
TERRACE W/EXTENSION AREA	480 SQ. FT.	44.59 SQ. M.
<b>TOTAL RESIDENCE</b>	<b>1,826 SQ. FT.</b>	<b>169.64 SQ. M.</b>

Stated dimensions are measured to the exterior boundaries of the exterior walls and the centerline of interior demising walls and in fact vary from the dimensions that would be determined by using the description and definition of the "Unit" set forth in the Declaration (which generally only includes the interior airspace between the perimeter walls and excludes interior structural components). For your reference, the area of the Unit, determined in accordance with those defined unit boundaries, is + or - 1,166 sq. ft. for units 06. Note that measurements of rooms set forth on this floor plan are generally taken at the greatest points of each given room (as if the room were a perfect rectangle), without regard for any cutouts. Accordingly, the area of the actual room will typically be smaller than the product obtained by multiplying the stated length times width. All dimensions are approximate and may vary with actual construction, and all floor plans and development plans are subject to change.





Daniel Hornek PA Realtor  
(305) 808-7918  
www.MiamiCondosSearch.com



TERRACE EXTENSION 27 SQ. FT.  
A. FLOORS 15, 20, 25, 30, 35, 40, 45, 50  
B. FLOORS 14, 19, 24, 29, 34, 39, 44, 49

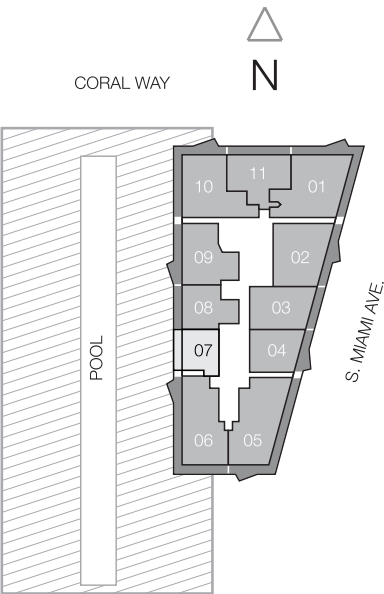
Floors not listed above do not have an extended terrace.  
Terrace without extension is 141 SQ. FT.

## SLS RESIDENCE 07

1 BEDROOM / 1 BATH

A/C INTERIOR AREA	692 SQ. FT.	64.28 SQ. M.
TERRACE W/EXTENSION AREA	168 SQ. FT.	15.60 SQ. M.
TOTAL RESIDENCE	860 SQ. FT.	79.88 SQ. M.

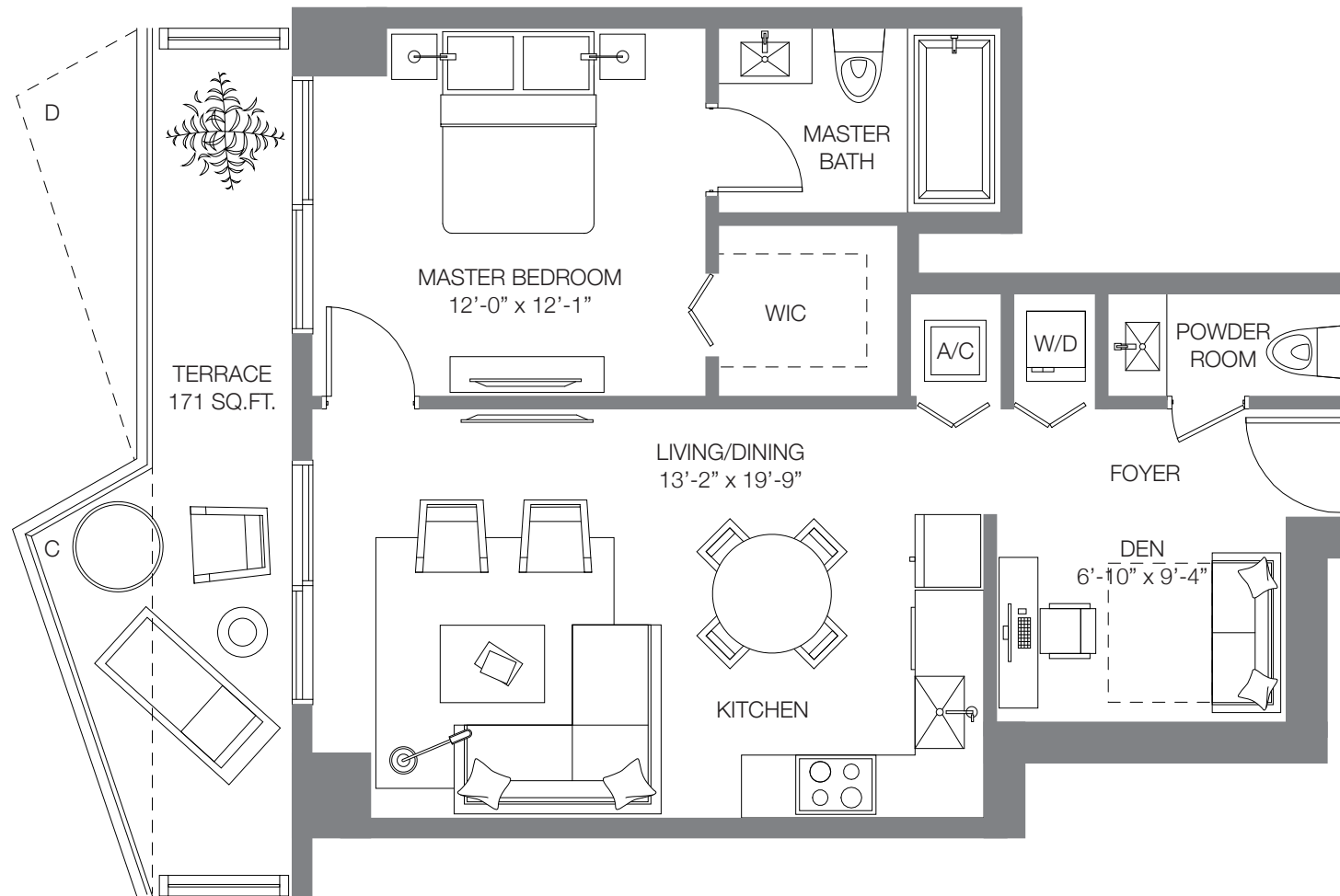
Stated dimensions are measured to the exterior boundaries of the exterior walls and the centerline of interior demising walls and in fact vary from the dimensions that would be determined by using the description and definition of the "Unit" set forth in the Declaration (which generally only includes the interior airspace between the perimeter walls and excludes interior structural components). For your reference, the area of the Unit, determined in accordance with those defined unit boundaries, is + or - 544 sq. ft. for units 07 Note that measurements of rooms set forth on this floor plan are generally taken at the greatest points of each given room (as if the room were a perfect rectangle), without regard for any cutouts. Accordingly, the area of the actual room will typically be smaller than the product obtained by multiplying the stated length times width. All dimensions are approximate and may vary with actual construction, and all floor plans and development plans are subject to change.







Daniel Hornek PA Realtor  
(305) 808-7918  
[www.MiamiCondosSearch.com](http://www.MiamiCondosSearch.com)



TERRACE EXTENSION 27 SQ. FT.  
C. FLOORS 12, 18, 23, 28, 33, 38, 43, 48  
D. FLOORS 11, 17, 22, 27, 32, 37, 42, 47

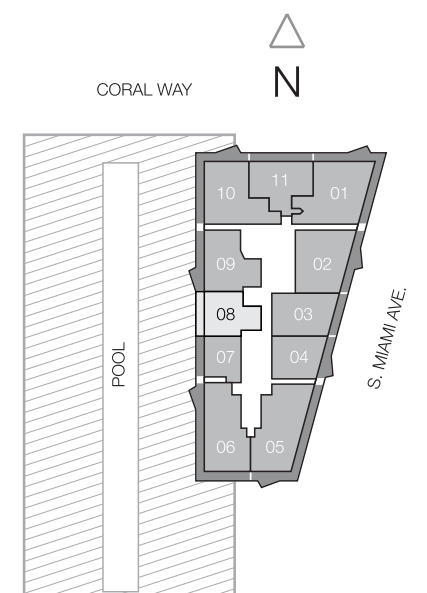
Floors not listed above do not have an extended terrace.  
Terrace without extension is 144 SQ. FT.

## SLS RESIDENCE 08

1 BEDROOM & DEN / 1 ½ BATHS

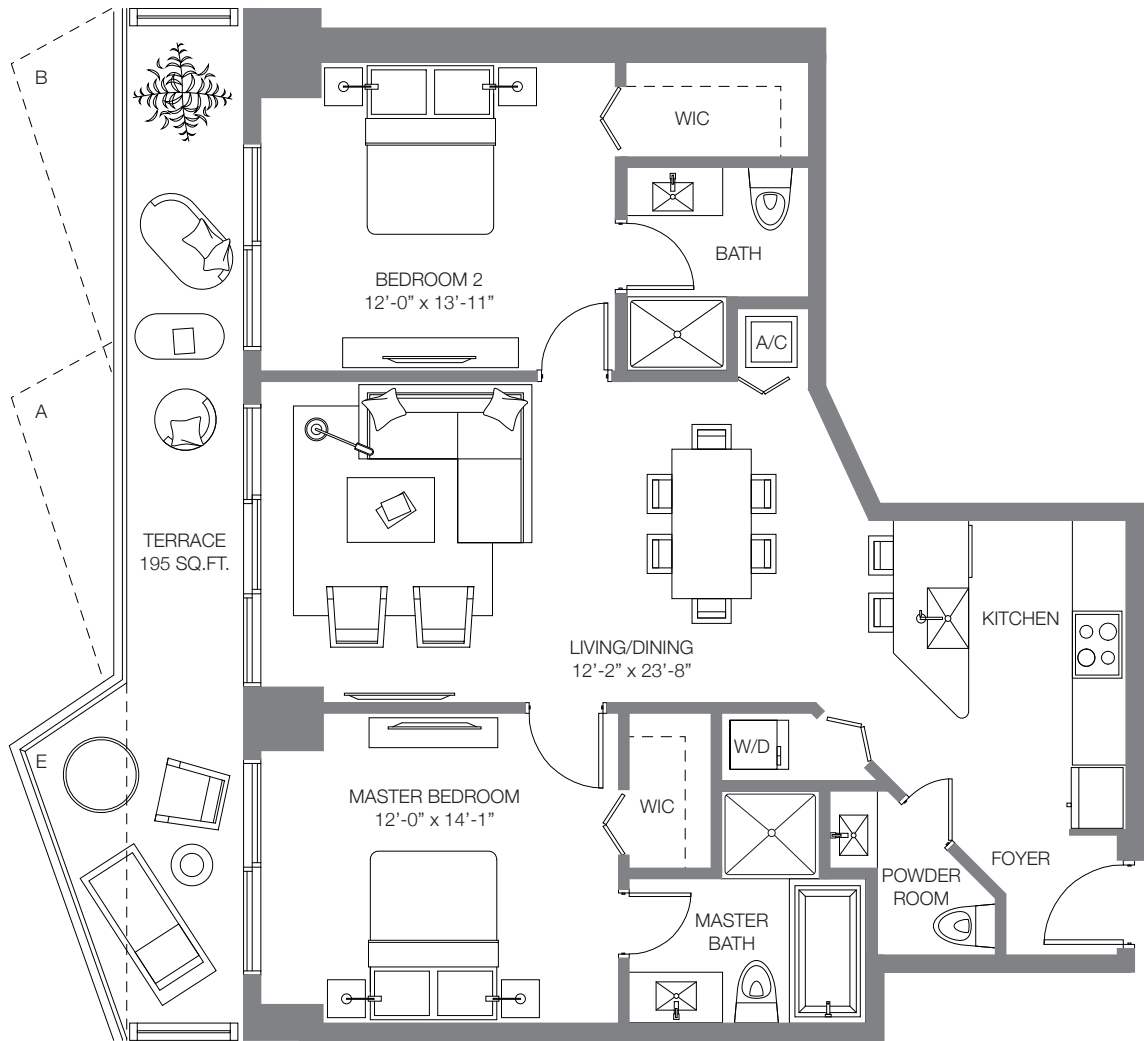
A/C INTERIOR AREA	762 SQ. FT.	70.79 SQ. M.
TERRACE W/EXTENSION AREA	171 SQ. FT.	15.88 SQ. M.
<b>TOTAL RESIDENCE</b>	<b>933 SQ. FT.</b>	<b>86.67 SQ. M.</b>

Stated dimensions are measured to the exterior boundaries of the exterior walls and the centerline of interior demising walls and in fact vary from the dimensions that would be determined by using the description and definition of the "Unit" set forth in the Declaration (which generally only includes the interior airspace between the perimeter walls and excludes interior structural components). For your reference, the area of the Unit, determined in accordance with those defined unit boundaries, is + or - 668 sq. ft. for units 08. Note that measurements of rooms set forth on this floor plan are generally taken at the greatest points of each given room (as if the room were a perfect rectangle), without regard for any cutouts. Accordingly, the area of the actual room will typically be smaller than the product obtained by multiplying the stated length times width. All dimensions are approximate and may vary with actual construction, and all floor plans and development plans are subject to change.





Daniel Hornek PA Realtor  
(305) 808-7918  
www.MiamiCondosSearch.com



TERRACE EXTENSION 27 SQ. FT.  
A. FLOORS 15, 20, 25, 30, 35, 40, 45, 50  
B. FLOORS 14, 19, 24, 29, 34, 39, 44, 49  
E. FLOORS 10, 16, 21, 26, 31, 36, 41, 46

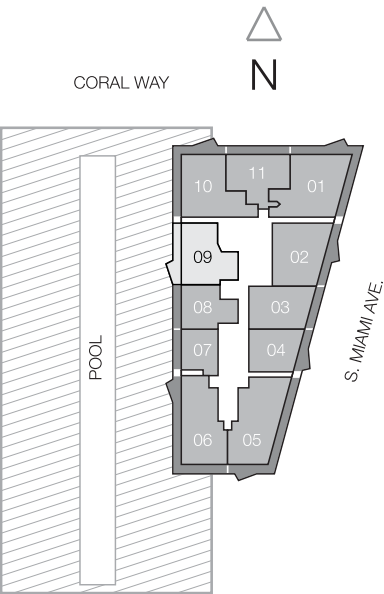
Floors not listed above do not have an extended terrace.  
Terrace without extension is 168 SQ. FT.

## SLS RESIDENCE 09

2 BEDROOMS / 2 ½ BATHS

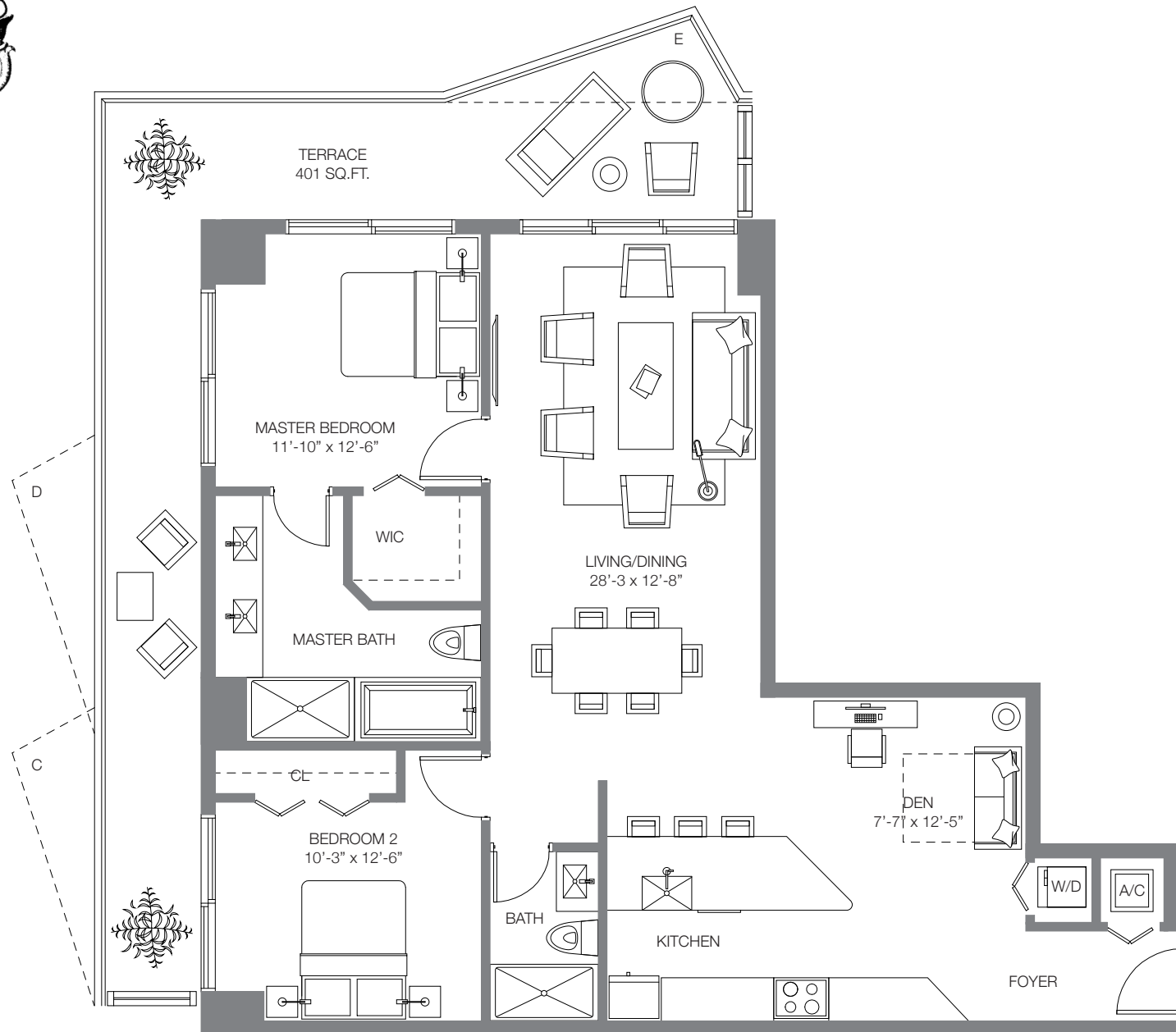
A/C INTERIOR AREA	1,115 SQ. FT.	103.59 SQ. M.
TERRACE W/EXTENSION AREA	195 SQ. FT.	18.11 SQ. M.
TOTAL RESIDENCE	1,310 SQ. FT.	121,70 SQ. M.

Stated dimensions are measured to the exterior boundaries of the exterior walls and the centerline of interior demising walls and in fact vary from the dimensions that would be determined by using the description and definition of the "Unit" set forth in the Declaration (which generally only includes the interior airspace between the perimeter walls and excludes interior structural components). For your reference, the area of the Unit, determined in accordance with those defined unit boundaries, is + or - 966 sq. ft. for units 09. Note that measurements of rooms set forth on this floor plan are generally taken at the greatest points of each given room (as if the room were a perfect rectangle), without regard for any cutouts. Accordingly, the area of the actual room will typically be smaller than the product obtained by multiplying the stated length times width. All dimensions are approximate and may vary with actual construction, and all floor plans and development plans are subject to change.





Daniel Hornek PA Realtor  
(305) 808-7918  
[www.MiamiCondosSearch.com](http://www.MiamiCondosSearch.com)



TERRACE EXTENSION 27 SQ. FT.  
C. FLOORS 12, 18, 23, 28, 33, 38, 43, 48  
D. FLOORS 11, 17, 22, 27, 32, 37, 42, 47  
E. FLOORS 10, 16, 21, 26, 31, 36, 41, 46

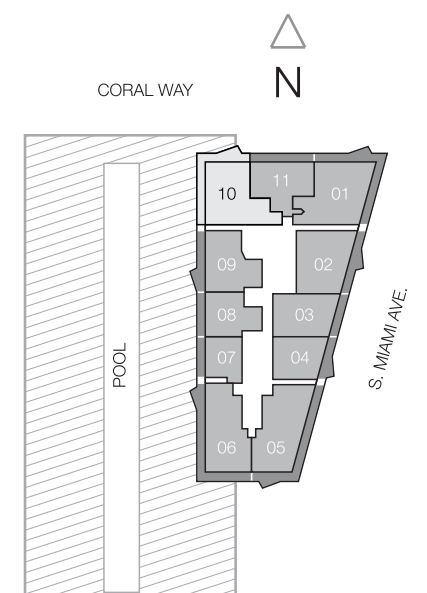
Floors not listed above do not have an extended terrace.  
Terrace without extension is 374 SQ. FT.

## SLS RESIDENCE 10

2 BEDROOMS & DEN / 2 BATHS

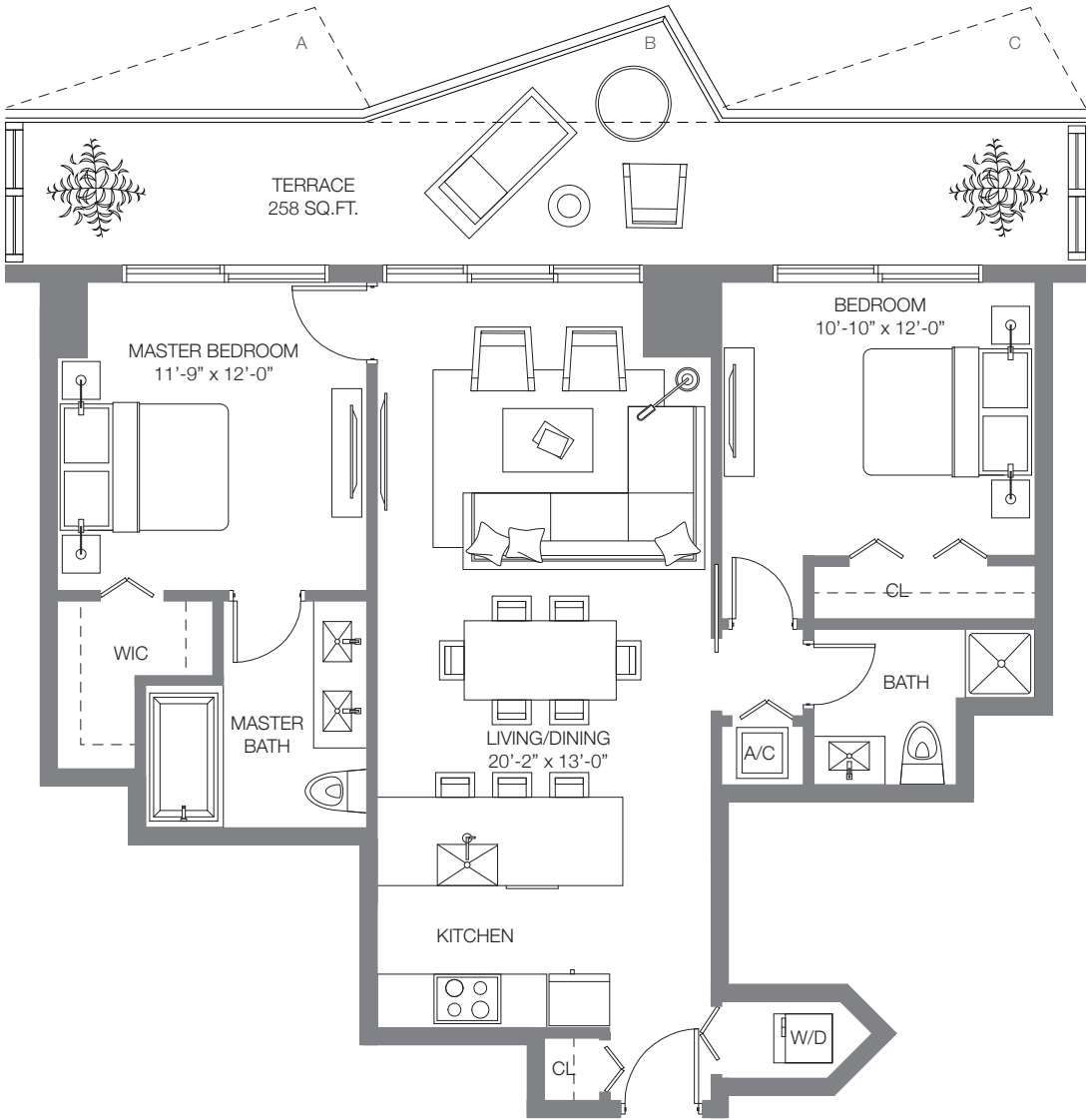
A/C INTERIOR AREA	1,334 SQ. FT.	123.93 SQ. M.
TERRACE W/EXTENSION AREA	401 SQ. FT.	37.25 SQ. M.
<b>TOTAL RESIDENCE</b>	<b>1,735 SQ. FT.</b>	<b>161.18 SQ. M.</b>

Stated dimensions are measured to the exterior boundaries of the exterior walls and the centerline of interior demising walls and in fact vary from the dimensions that would be determined by using the description and definition of the "Unit" set forth in the Declaration (which generally only includes the interior airspace between the perimeter walls and excludes interior structural components). For your reference, the area of the Unit, determined in accordance with those defined unit boundaries, is + or - 1,156 sq. ft. for units 10. Note that measurements of rooms set forth on this floor plan are generally taken at the greatest points of each given room (as if the room were a perfect rectangle), without regard for any cutouts. Accordingly, the area of the actual room will typically be smaller than the product obtained by multiplying the stated length times width. All dimensions are approximate and may vary with actual construction, and all floor plans and development plans are subject to change.



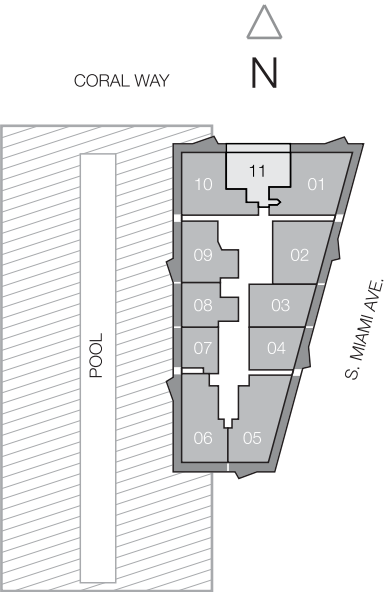


Daniel Hornek PA Realtor  
(305) 808-7918  
www.MiamiCondosSearch.com



TERRACE EXTENSION 27 SQ. FT.  
A. FLOORS 15, 20, 25, 30, 35, 40, 45, 50  
B. FLOORS 14, 19, 24, 29, 34, 39, 44, 49  
C. FLOORS 12, 18, 23, 28, 33, 38, 43, 48

Floors not listed above do not have an extended terrace.  
Terrace without extension is 231 SQ. FT.



# SLS RESIDENCE 11

2 BEDROOMS / 2 BATHS

A/C INTERIOR AREA	962 SQ. FT.	89.37 SQ. M.
TERRACE W/EXTENSION AREA	258 SQ. FT.	23.96 SQ. M.
TOTAL RESIDENCE	1,220 SQ. FT.	113.33 SQ. M.

Stated dimensions are measured to the exterior boundaries of the exterior walls and the centerline of interior demising walls and in fact vary from the dimensions that would be determined by using the description and definition of the "Unit" set forth in the Declaration (which generally only includes the interior airspace between the perimeter walls and excludes interior structural components). For your reference, the area of the Unit, determined in accordance with those defined unit boundaries, is + or - 872 sq. ft. for units 11. Note that measurements of rooms set forth on this floor plan are generally taken at the greatest points of each given room (as if the room were a perfect rectangle), without regard for any cutouts. Accordingly, the area of the actual room will typically be smaller than the product obtained by multiplying the stated length times width. All dimensions are approximate and may vary with actual construction, and all floor plans and development plans are subject to change.





This is not intended to be an offer to sell, or solicitation to buy, condominium units to residents of CT, ID, NJ, NY and OR, unless registered or exemptions are available, or in any other jurisdiction where prohibited by law, and your eligibility for purchase will depend upon your state of residency. This offering is made only by the prospectus for the condominium and no statement should be relied upon if not made in the prospectus. The sketches, renderings, graphic materials, plans, specifications, terms, conditions and statements contained in this brochure are proposed only, and the Developer reserves the right to modify, revise or withdraw any or all of same in its sole discretion and without prior notice. All improvements, designs and construction are subject to first obtaining the appropriate federal, state and local permits and approvals for same. These drawings and depictions are conceptual only and are for the convenience of reference. They should not be relied upon as representations, express or implied, of the final detail of the residences. The developer expressly reserves the right to make modifications, revisions, and changes it deems desirable in its sole and absolute discretion. All depictions of furniture, appliances, counters, soffits, floor coverings and other matters of detail, including, without limitation, items of finish and decoration, are conceptual only and are not necessarily included in each Unit. The photographs contained in this brochure may be stock photography or have been taken off-site and are used to depict the spirit of the lifestyles to be achieved rather than any that may exist or that may be proposed, and are merely intended as illustrations of the activities and concepts depicted therein. Consult your Agreement and the Prospectus for the items included with the Unit. Dimensions and square footage are approximate and may vary with actual construction. Restaurants, clubs and other business establishments and/or any operators of same referenced herein are subject to change at any time, and no representations regarding restaurants, clubs, businesses and/or operators within the project may be relied upon. Restaurants, clubs and/or other business establishments are anticipated to be operated from the commercial components of the project which will be offered for sale to third parties. Determination regarding use of the commercial spaces will be in the discretion of the purchasers of those spaces and there is no assurance that they will be used for the purposes, and/or with the operators, named herein. Any and all references to, and/or renderings of, Brickell CityCentre, Museum Park and/or Resorts World Miami and other proposed projects depicted are proposed only, are not constructed, and are not being developed by the Developer of SLS Hotel & Residences Brickell Condominium. As such, the Developer has no control over those projects and there is no guarantee that they will be developed, or if so, when and what they will consist of. The information provided herein regarding Brickell CityCentre, Museum Park, Resorts World Miami or other proposed projects depicted was obtained from newspaper articles and other public information and Developer makes no representations as to same. Attractions and areas referenced and/or identified in the "Find the Energy & Spirit of Miami in Brickell" section of this publication are off-site and not controlled by the Developer. They are accurate as of the date of this publication, however there is no guarantee that they will continue to exist or that there won't be changes and/or substitutions of same. The Related Group is not the project developer. This Condominium is being developed by PRH 1300 S Miami Avenue, LLC ("Developer"), which has a limited right to use the trademarked names and logos of The Related Group pursuant to a license and marketing agreement with The Related Group. Any and all statements, disclosures and/or representations shall be deemed made by Developer and not by The Related Group and you agree to look solely to Developer (and not to The Related Group and/or any of its affiliates) with respect to any and all matters relating to the marketing and/or development of the Condominium and with respect to the sales of units in the Condominium. The project graphics, renderings and text provided herein are copyrighted works owned by the developer. © 2012, PRH 1300 S Miami Avenue, LLC. All rights reserved. Unauthorized reproduction, display or other dissemination of such materials is strictly prohibited and constitutes copyright infringement. No real estate broker is authorized to make any representations or other statements regarding the projects, and no agreements with, deposits paid to or other arrangements made with any real estate broker are or shall be binding on the developer. All prices are subject to change at any time and without notice, and do not include optional features or premiums for upgraded units. From time to time, price changes may have occurred that are not yet reflected on this brochure. Please check with the sales center for the most current pricing.